



6-8 Pier Street, West Hoe, Plymouth, PL1 3BS

£135,000 Share of Freehold

**ATWELL
MARTIN**
ESTATE AGENTS



6-8 Pier Street

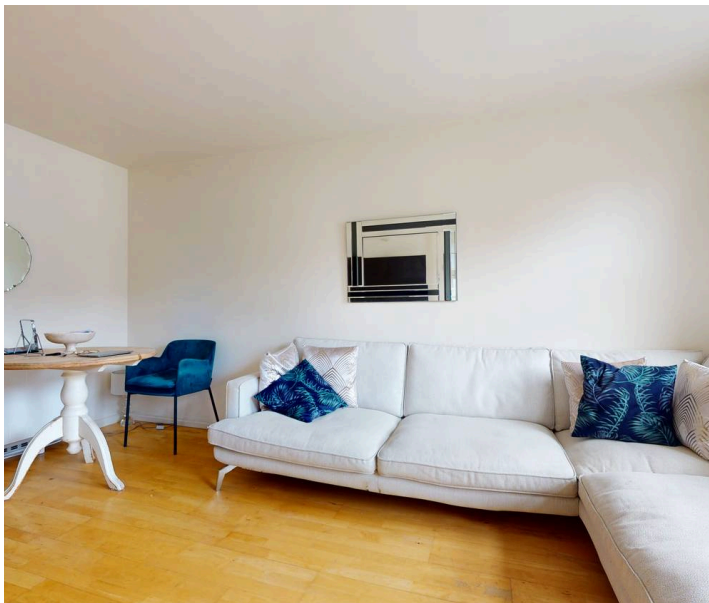
West Hoe, Plymouth, PL1 3BS

Charming top floor flat in West Hoe, near waterfront. Spacious bedroom, open plan living, modern bathroom. Ideal for first home or investment with off-road parking. Blend of city living and tranquillity. Viewing available.

Council Tax band: A

Tenure: Share of Freehold

- One Bedroom West Hoe Top Floor Flat
- Off Road Parking
- Generously Sized Bedroom
- Located a Stones Throw from The Waterfront
- Immaculately Presented Living Space
- Holiday Let Potential
- Ideal First Time Buy



6-8 Pier Street

West Hoe, Plymouth, PL1 3BS

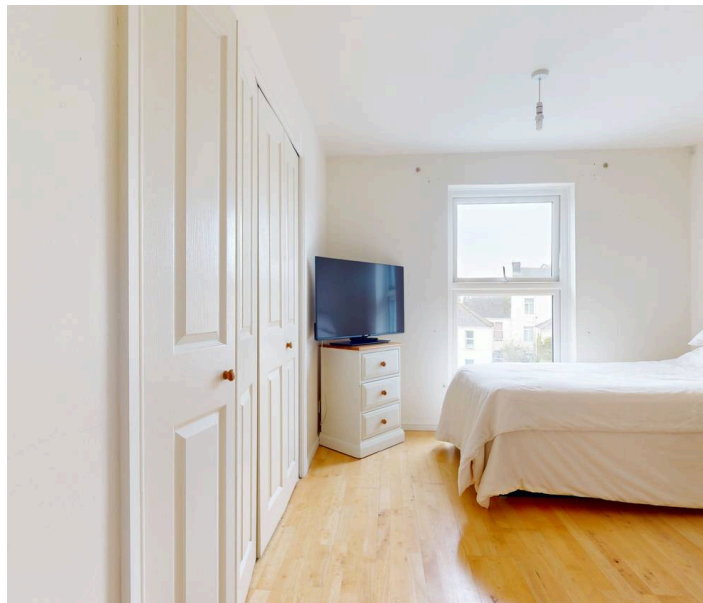
Welcome to this charming top floor flat in the sought-after West Hoe area, just a stone's throw away from the picturesque waterfront. As you step into this immaculately presented living space, you are greeted by a generously sized bedroom, perfect for relaxing after a long day.

The open plan design seamlessly combines the living and dining areas, offering an inviting atmosphere for entertaining guests or simply unwinding. The three piece bathroom suite offers a relaxing contemporary feel.

The bedroom is thoughtfully designed to provide ample space for storage and relaxation, ensuring that you have all the comfort you need. With off-road parking available, convenience is at your fingertips, making day-to-day living a breeze.

This one-bedroom flat is ideal for those seeking their first home or looking for a great investment opportunity with its potential for holiday letting. Situated in a prime location, this flat is surrounded by a vibrant community and local amenities, providing a great blend of city living and tranquillity by the waterfront.

Contact today to book a viewing.



6-8 Pier Street

West Hoe, Plymouth, PL1 3BS

Tenure & Services

Tenure: Share of Freehold

Lease Length: 960 years remaining

Service Charge: £1300.00 per annum

EPC: D

Council Tax Band: A





Atwell Martin

Atwell Martin, 65 Southside Street – PL1 2LA

01752 202121

plymouthsales@atwell-martin.co.uk

plymouth.atwellmartin.co.uk/

Atwell Martin Plymouth endeavour to ensure the accuracy of property details produced and displayed. Please note that we have not tested any apparatus, equipment, fixtures, fittings or services and so cannot verify that they are connected, in working order or fit for purpose. It is imperative that the buyer of any property makes such checks, prior to purchase so as to satisfy themselves of the properties suitability for their purchase. .

