



Aqua House, 1 Kingdom Street, Millbay, Plymouth, PL1 3GJ

£310,000 LEASEHOLD



Aqua House

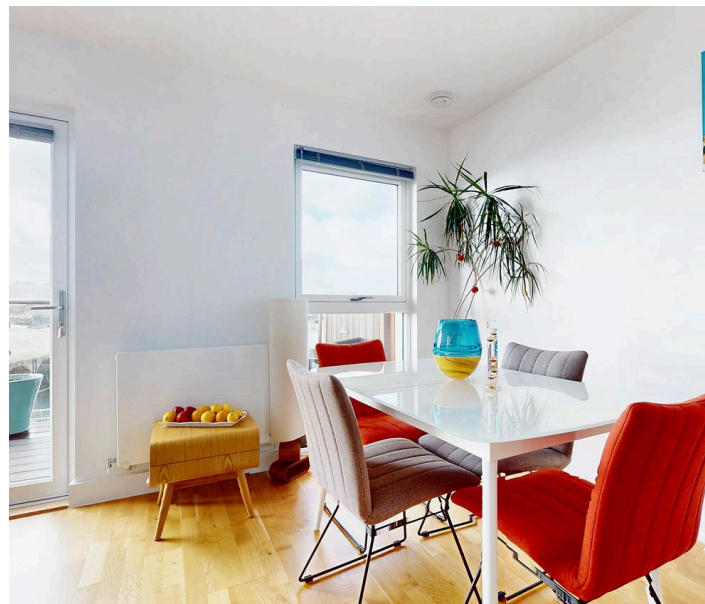
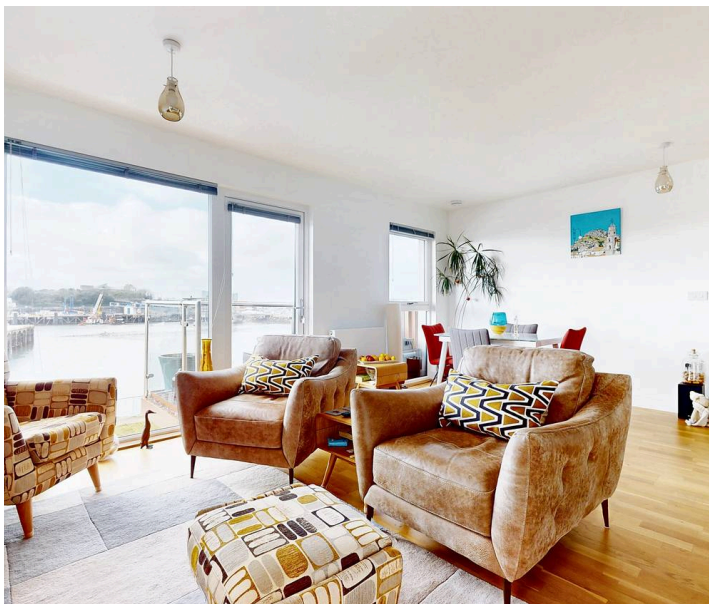
Kingdom Street, Plymouth

Luxurious 2-bed waterside apartment in Quadrant Wharf Development, with dual-aspect living room, balcony with marina views, en-suite master bedroom, modern kitchen, and spa-like bathroom. Enjoy allocated parking and lift access. Ideal for a sophisticated lifestyle. Contact for viewing.

Council Tax band: D

Tenure: Leasehold

- Two Bedroom First Floor Waterside Apartment
- Dual Aspect Open Plan Living Room
- West Facing Balcony with Marina & Drake's Island Views
- Allocated Parking Space
- Lift Access
- Fully Fitted Kitchen with Neff Appliances
- Master En-suite Bedroom with Fitted Wardrobes
- Contemporary Style Family Bathroom
- Water Views from all Primary Rooms



Aqua House

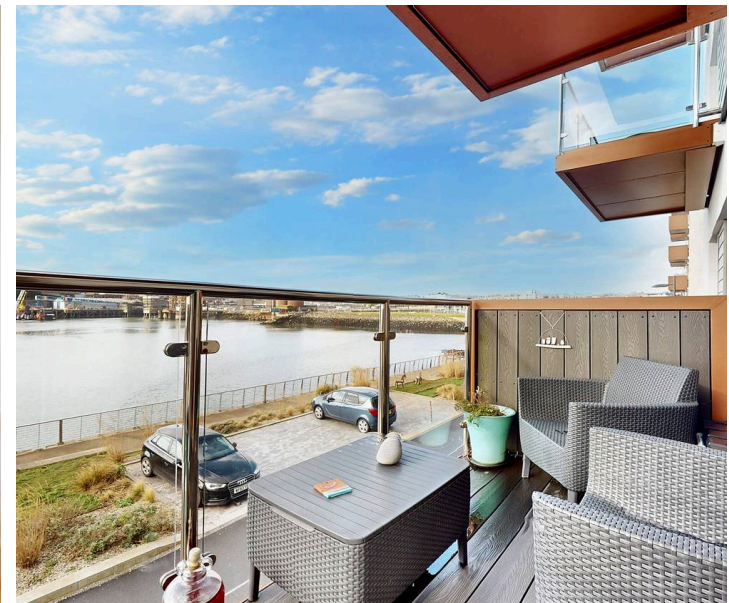
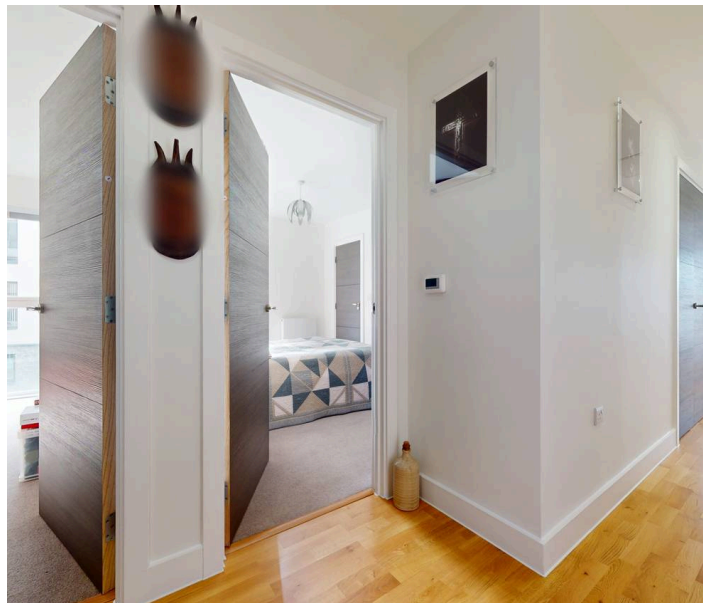
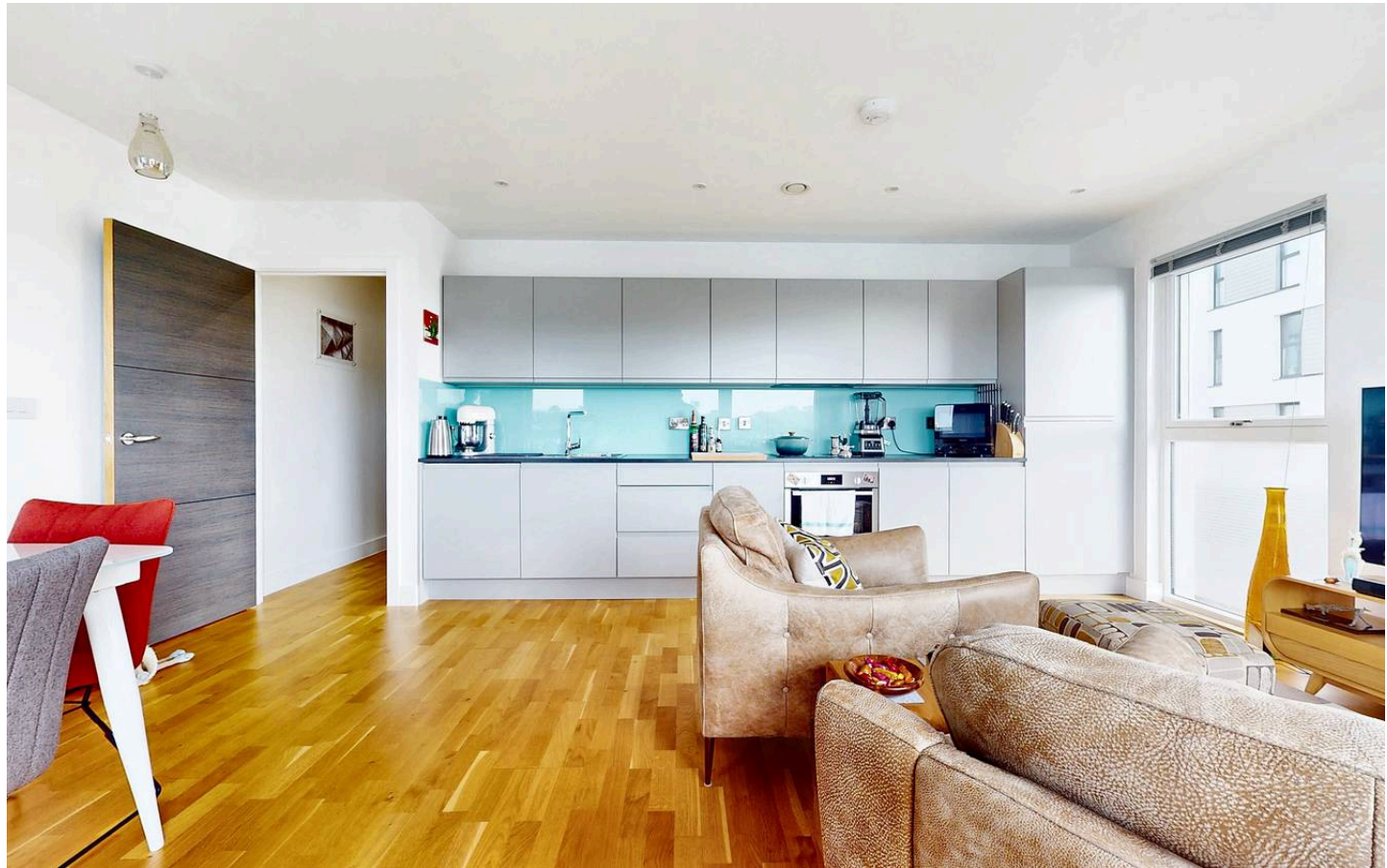
Kingdom Street, Plymouth

Step into this exquisite two-bedroom first-floor waterside apartment, situated in the sort after regenerated Quadrant Wharf Development. As you enter, you're greeted by a dual-aspect open-plan living room that exudes natural light and offers seamless transitions between spaces. The west-facing balcony, overlooking the marina and Drake's Island, provides a picturesque backdrop for relaxing evenings or entertaining guests.

This property boasts a range of features designed to enhance your lifestyle, including an allocated parking space for convenience, lift access for added ease, and stunning water views visible from all primary rooms. The fully fitted kitchen, complete with top-of-the-line Neff appliances, caters to both culinary enthusiasts and those who appreciate modern convenience.

Retreat to the master en-suite bedroom, featuring fitted wardrobes for ample storage and a touch of sophistication. The contemporary style family bathroom offers a spa-like experience, perfect for unwinding after a long day. Every detail in this apartment has been carefully considered to provide a luxurious and comfortable living environment.

Don't miss the opportunity to make this exceptional property your own. Contact us today for more information and to arrange a viewing.



Aqua House

Kingdom Street, Plymouth

Tenure & Services

Tenure: Leasehold

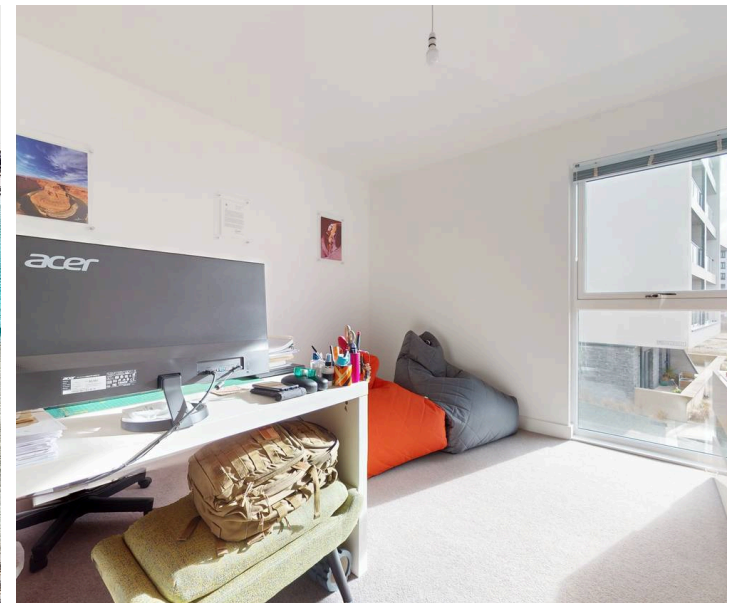
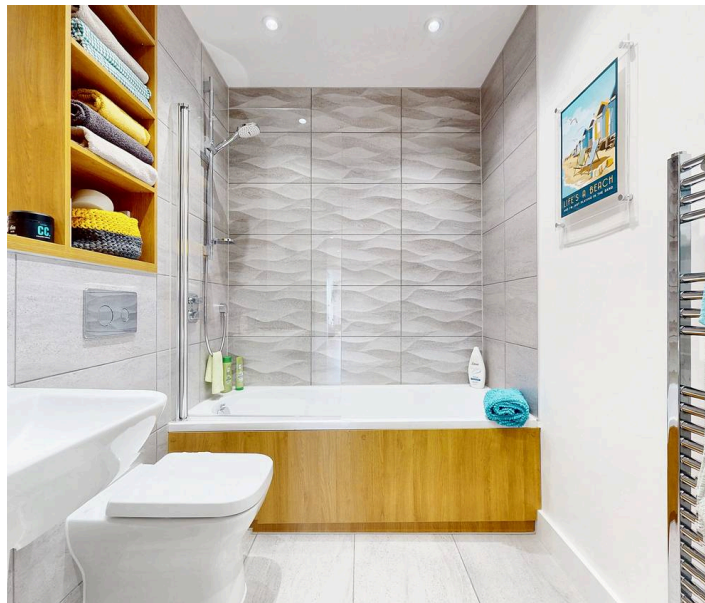
Lease Length: 232 years remaining

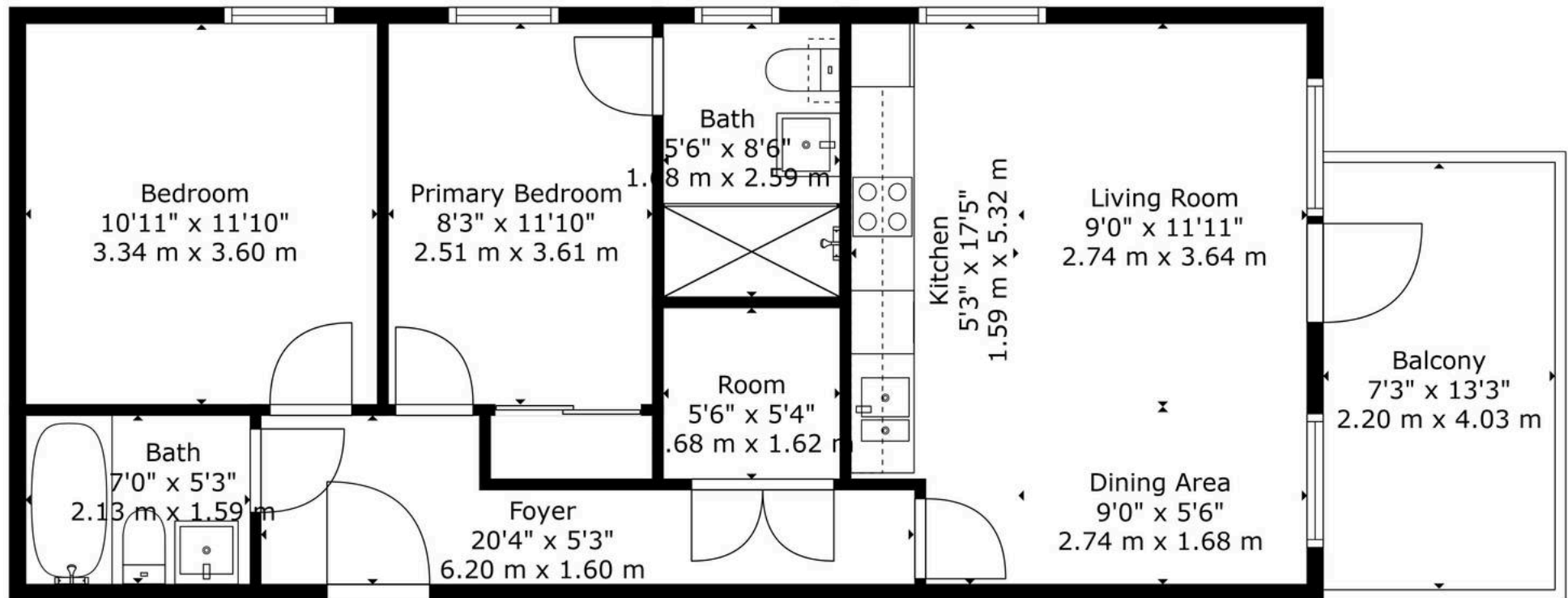
Service Charge: £2100.00 per annum

Ground Rent: £250.00 per annum

EPC: B

Council Tax Band: D





TOTAL: 697 sq. ft, 65 m2
 FLOOR 1: 697 sq. ft, 65 m2
 EXCLUDED AREAS: BALCONY: 96 sq. ft, 9 m2

Floor Plan Created By Cubicasa App. Measurements Deemed Highly Reliable But Not Guaranteed.





Atwell Martin

Atwell Martin, 65 Southside Street – PL1 2LA

01752 202121

plymouthsales@atwell-martin.co.uk

plymouth.atwellmartin.co.uk/

Atwell Martin Plymouth endeavour to ensure the accuracy of property details produced and displayed. Please note that we have not tested any apparatus, equipment, fixtures, fittings or services and so cannot verify that they are connected, in working order or fit for purpose. It is imperative that the buyer of any property makes such checks, prior to purchase so as to satisfy themselves of the properties suitability for their purchase. .

