



## Vauxhall Street Flats, Vauxhall Street, Plymouth, PL4 0DH

£145,000 LEASEHOLD





## Vauxhall Street Flats

Vauxhall Street, Plymouth

Waterfront 2 bed flat with picturesque Sutton Harbour Marina views. Modern kitchen, double bedrooms, balcony, permit parking, low service charge. Shower room. Ideal for waterfront living.

Council Tax band: B

Tenure: Leasehold

- Two Bedroom Flat Located on The waterfront
- Views of Sutton Harbour Marina
- Balcony
- Permit Parking
- Modern Kitchen
- Two Double Bedrooms
- Low Service Charge
- Cosy Living Space
- Shower Room



# Vauxhall Street Flats

Vauxhall Street, Plymouth

2 bedroom flat located on the waterfront, offering picturesque views of the Sutton Harbour Marina. This property boasts a cosy living space, double bedrooms, modern kitchen and a shower room.

Step into the heart of the home, the modern kitchen, where you'll find sleek countertops, integrated appliances, and ample storage space.

The property features two generously sized double bedrooms, providing plenty of space for rest and relaxation. The master bedroom offers direct access to a private balcony, where you can enjoy your morning cup of coffee while taking in the marina views.

Convenience is key with permit parking available, ensuring you always have a place to park your vehicle. Say goodbye to high service charges, as this property boasts a low service charge, making it an affordable option for those looking to enjoy waterfront living.

## Tenure & Services

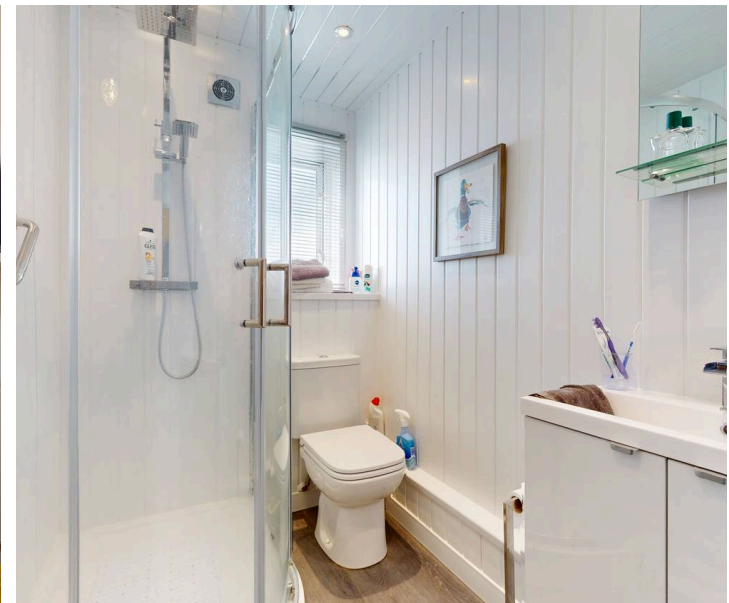
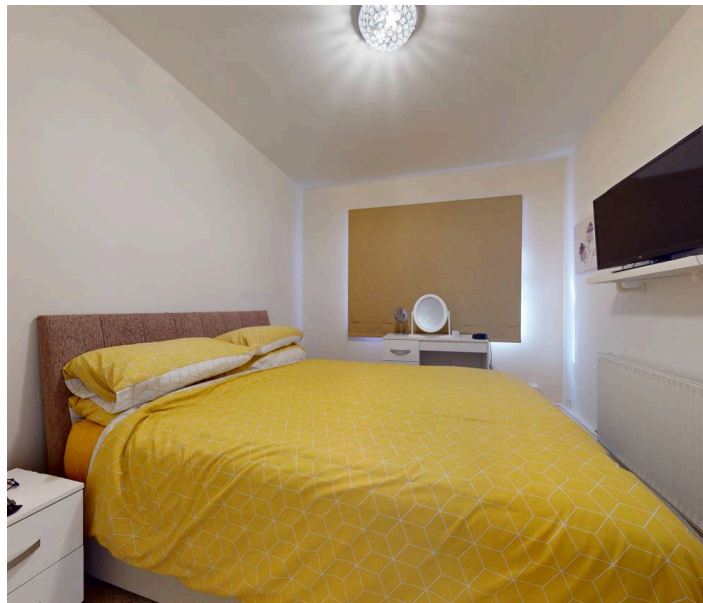
**Tenure:** Leasehold

**Lease Expiry:** 26.11.2114

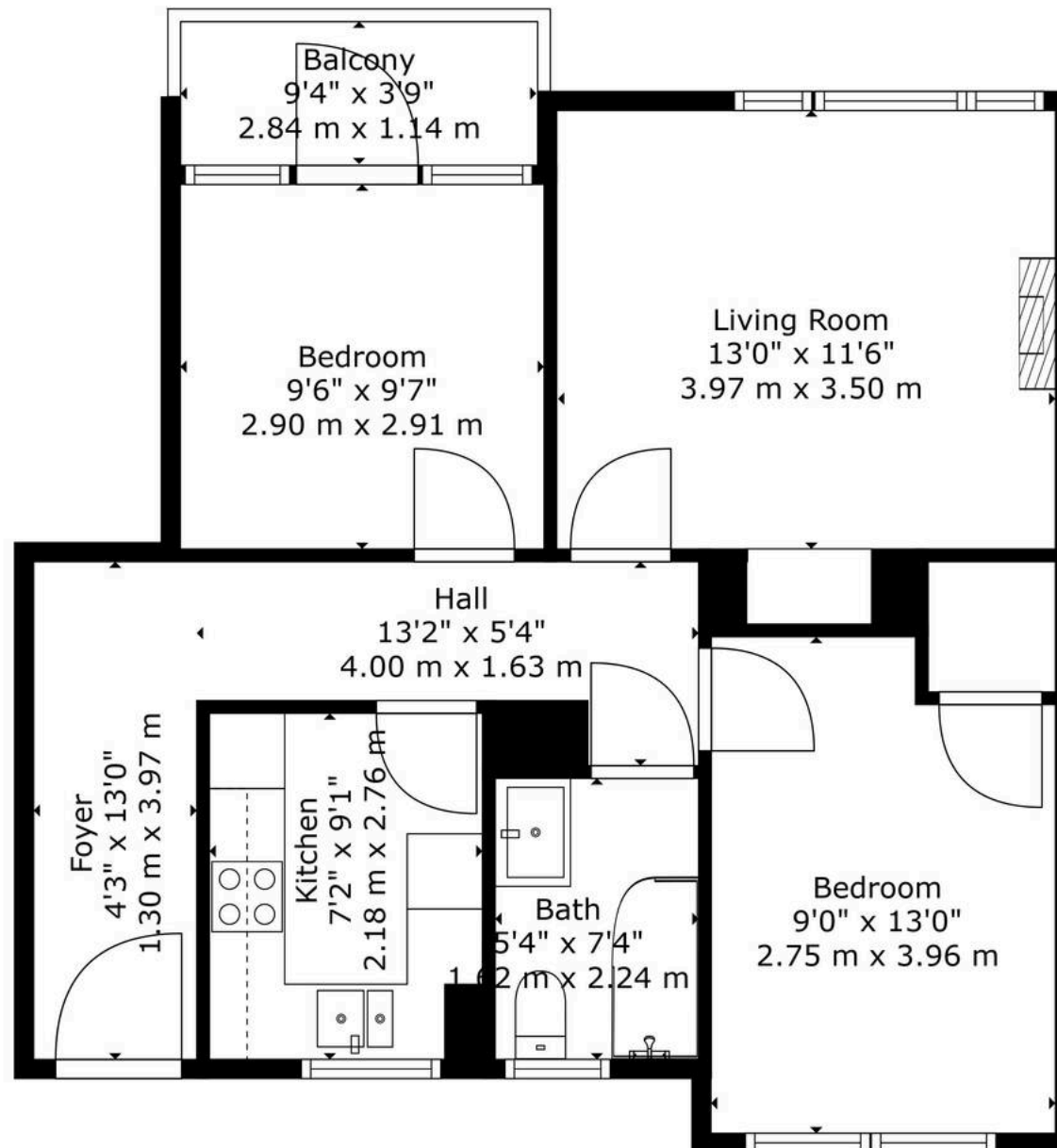
**Service Charge & Ground Rent:** £906.00 pa

**EPC:** D

**Council Tax Band:** B







**TOTAL: 618 sq. ft, 57 m2**  
FLOOR 1: 618 sq. ft, 57 m2  
EXCLUDED AREAS: BALCONY: 35 sq. ft, 3 m2

Floor Plan Created By Cubicasa App. Measurements Deemed Highly Reliable But Not Guaranteed.







## Atwell Martin

**Atwell Martin, 65 Southside Street – PL1 2LA**

01752 202121

[plymouthsales@atwell-martin.co.uk](mailto:plymouthsales@atwell-martin.co.uk)

[plymouth.atwellmartin.co.uk/](http://plymouth.atwellmartin.co.uk/)

Atwell Martin Plymouth endeavour to ensure the accuracy of property details produced and displayed. Please note that we have not tested any apparatus, equipment, fixtures, fittings or services and so cannot verify that they are connected, in working order or fit for purpose. It is imperative that the buyer of any property makes such checks, prior to purchase so as to satisfy themselves of the properties suitability for their purchase. .

