



Barbican Court, The Barbican, Plymouth, PL4 0EL

In Excess of £210,000 Share of Freehold



Barbican Court

The Barbican, Plymouth

Stunning 2-bed apartment in heart of The Barbican. Recently refurbished, open-plan living space, modern kitchen, king-size bedroom, permit parking. Ideal investment or city living. Live in style and convenience. Contact for viewing.

- Two Bedroom Apartment Located in the Heart of The Barbican
- Perfect Investment Opportunity for Holiday Lets
- Refurbished to an Elegant & Modern Standard
- Contemporary Shower Room
- Top Floor
- Share of Freehold
- Master King Size Bedroom
- Permit Parking Available
- Fully Fitted Kitchen with Breakfast Bar



Tenure & Services

Tenure: Share of Freehold

Lease Length: 999 years

Service Charge: £400pa

Council Tax Band: B

EPC: TBC

Parking: Parking Permit

Barbican Court

The Barbican, Plymouth

Step into this stunning two-bedroom apartment located in the heart of The Barbican. Ideal for those seeking a perfect city centre location or investment opportunity for holiday lets, this property is bound to impress.

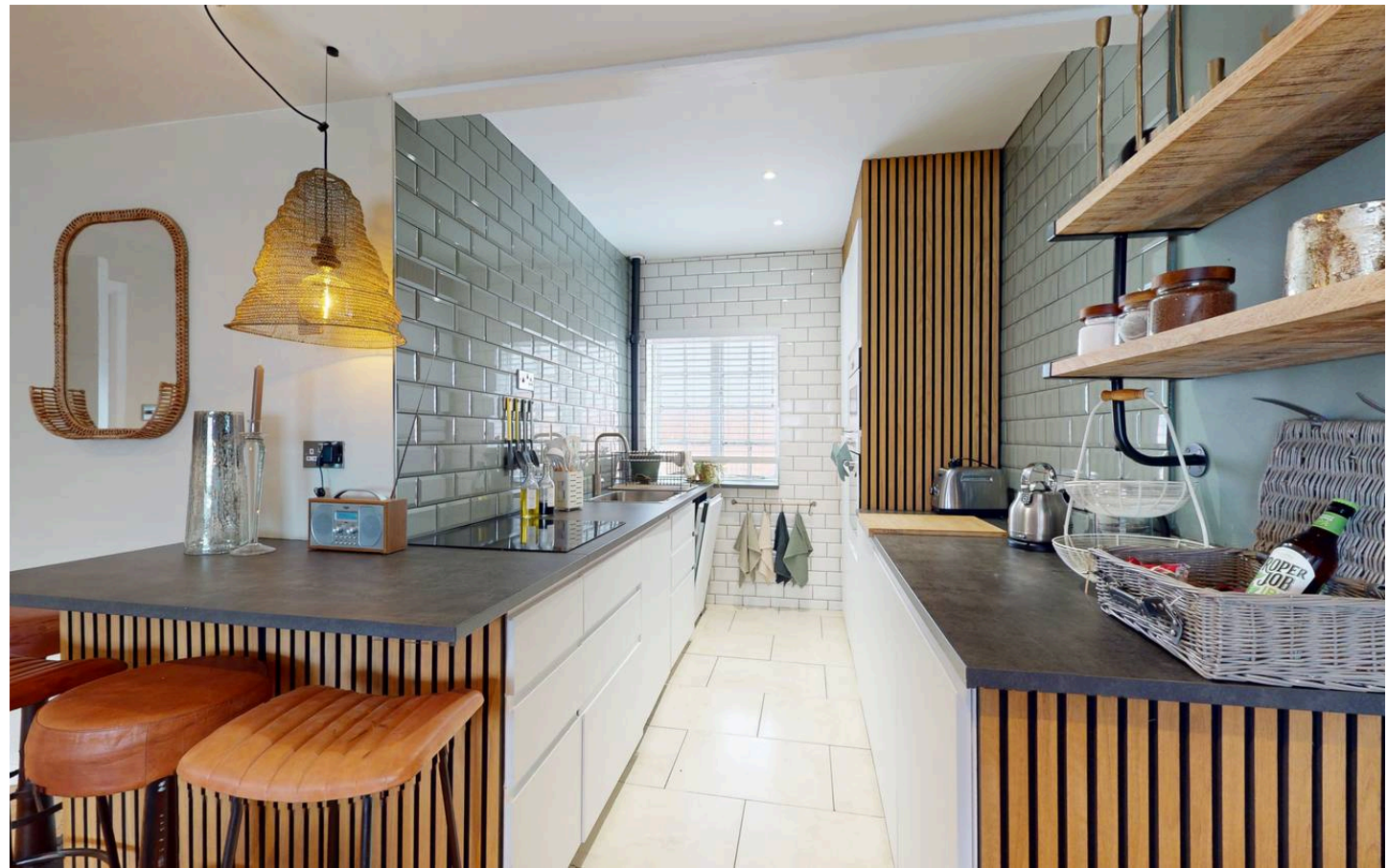
Recently refurbished to an elegant and modern standard, this top-floor flat boasts a Large Open plan living space, contemporary shower room and a share of freehold, offering that extra touch of exclusivity. The master king-size bedroom provides a spacious retreat, while permit parking available ensures convenience for residents and guests alike.

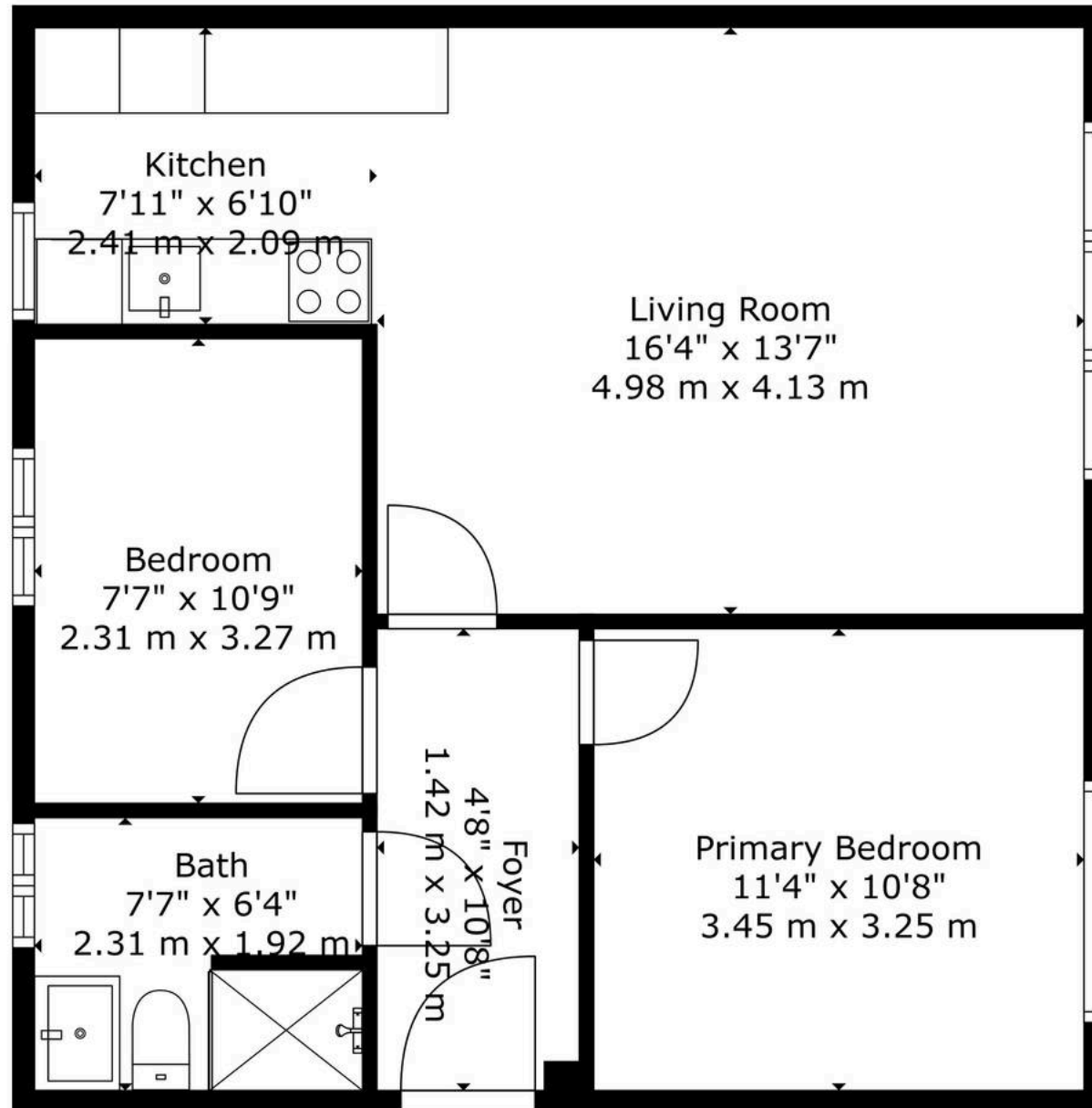
The stylish design continues into the fully fitted kitchen, complete with a breakfast bar, perfect for casual dining or entertaining guests.

This apartment's layout is designed for both functionality and style, with each room meticulously planned to create a seamless living experience. The open-plan design adds a sense of spaciousness, while the abundance of natural light streaming through the windows creates a warm and inviting atmosphere.

Located on the cobbled streets of the Barbican, this property offers the perfect city centre lifestyle.

Don't miss out on this fantastic opportunity to own a piece of urban paradise in The Barbican. Contact us today to arrange a viewing and discover more about this incredible property.





TOTAL: 596 sq. ft, 55 m2
FLOOR 1: 596 sq. ft, 55 m2

Floor Plan Created By Cubicasa App. Measurements Deemed Highly Reliable But Not Guaranteed.





Atwell Martin

Atwell Martin, 65 Southside Street – PL1 2LA

01752 202121

plymouthsales@atwell-martin.co.uk

plymouth.atwellmartin.co.uk/

Atwell Martin Plymouth endeavour to ensure the accuracy of property details produced and displayed. Please note that we have not tested any apparatus, equipment, fixtures, fittings or services and so cannot verify that they are connected, in working order or fit for purpose. It is imperative that the buyer of any property makes such checks, prior to purchase so as to satisfy themselves of the properties suitability for their purchase. .

