



Westcroft, Market Street, Kingsand

Guide Price £300,000 FREEHOLD



Westcroft, Market Street

Kingsand, Torpoint

Enchanting terraced house in historic Kingsand mews. Unique gallery space and 1-bedroom apartment with potential for extension. Coastal living with charm and modern versatility. Ideal retreat or investment opportunity.

Council Tax band: D

Tenure: Freehold

- A unique property featuring a gallery and separate apartment over in a Mews style setting
- To the Ground Floor, a gallery with additional storage
- to the first floor, a lovely one bedroom flat with space to potentially extend
- the entrance is shared with tow other properties, creating an attractive and intimate mews style setting.
- the property is situated less than a stones throw from the Beach at Kingsand, with its wealth of charming shops and eateries nearby
- overall, the property offers the ability to convert the gallery and apartment into a single dwelling subject to the granting of the necessary consents.



Westcroft, Market Street

Kingsand, Torpoint

Nestled within a delightful mews setting, this enchanting terraced house in the heart of Kingsand exudes charm, elegance, and an air of exclusivity. Mere moments from Kingsand Beach, this property presents a rare opportunity to embrace coastal living with a unique blend of historical character and modern versatility.

The ground floor opens to a spacious gallery, a truly unique feature that immediately captivates with its potential. Whether one envisions it as a space for displaying art, indulging creative pursuits, or simply enjoying a versatile room with ample storage, it is certain to inspire. Ascending to the first floor, one is met with a delightful one-bedroom apartment that invites imagination. Bright and welcoming, this flat holds untold potential, with the exciting prospect of extending the space to suit one's particular requirements, subject, of course, to the necessary permissions.

Sharing an entrance with only two other properties, this residence embodies the intimacy and charm of a quintessential mews. The proximity to Kingsand Beach and the quaint shops and eateries of the village infuses the property with the essence of coastal living, all within a vibrant yet serene community setting.



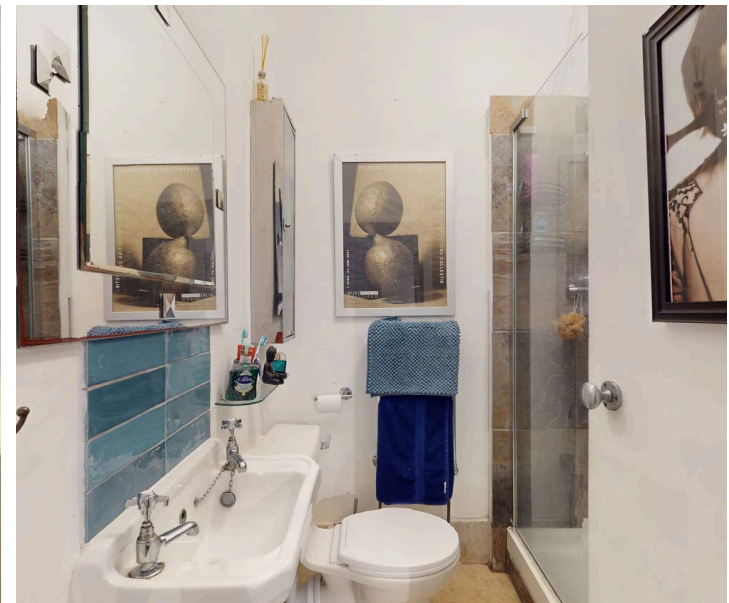
Westcroft Market Street

Kingsand, Torpoint

Perhaps most intriguing of all is the flexibility this property affords. With its distinctive layout, it offers the exciting prospect of transformation—be it the merging of the gallery and apartment into a singular, harmonious dwelling or the continued use of the two spaces to suit a range of purposes. This is, undoubtedly, a home that invites its owner to dream boldly and create a sanctuary perfectly attuned to their lifestyle.

Ideal as a seaside retreat, a peaceful escape from the demands of modern life, or a shrewd investment in a highly desirable locale, this property stands as a rare gem. The allure of its setting, coupled with its remarkable potential, ensures it will captivate all who step through its doors.

Westcroft offers a rare opportunity to live in one of Cornwall's most enchanting coastal villages, where natural beauty, history, and community spirit come together to create an unparalleled lifestyle.





Atwell Martin

Atwell Martin, 65 Southside Street – PL1 2LA

01752 202121

plymouthsales@atwell-martin.co.uk

plymouth.atwellmartin.co.uk/

Atwell Martin Plymouth endeavour to ensure the accuracy of property details produced and displayed. Please note that we have not tested any apparatus, equipment, fixtures, fittings or services and so cannot verify that they are connected, in working order or fit for purpose. It is imperative that the buyer of any property makes such checks, prior to purchase so as to satisfy themselves of the properties suitability for their purchase. .

