



The Square, The Millfields, Stonehouse, Plymouth, PL1 3JX

£640,000 LEASEHOLD



The Square

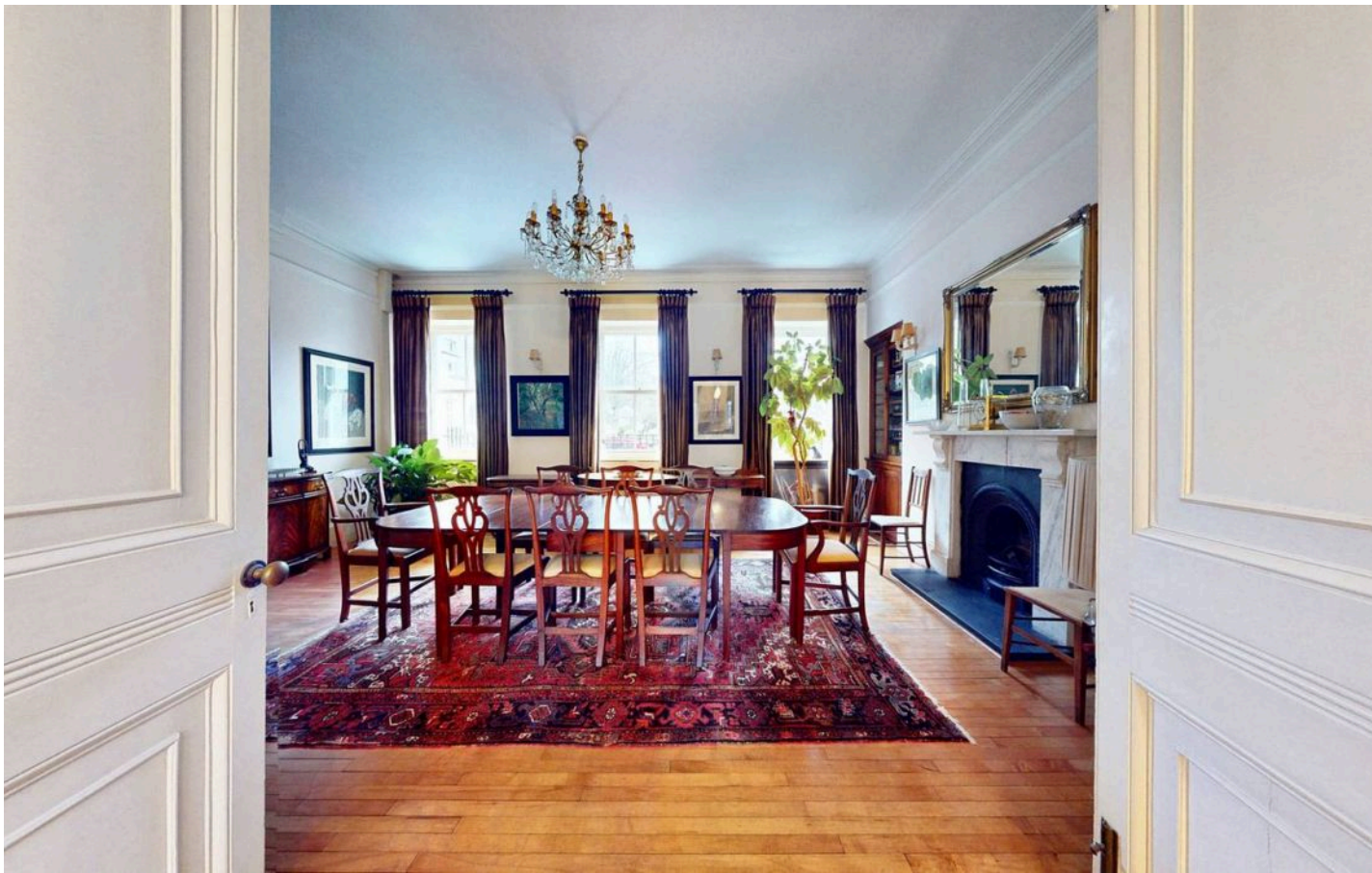
Stonehouse, Plymouth

Luxury Georgian Townhouse in prestigious Millfields Estate with history dating back to Royal Naval Hospital. Stunning property offers elegance, charm, convenience, and privacy. Own a piece of Plymouth's heritage. Features modern amenities, walled garden, parking, and security. Perfect blend of historical significance and modern living. Exceptional location with easy access to transportation links. A rare opportunity not to be missed. Contact for viewing.

Council Tax band: D

Tenure: Leasehold





The Square

Stonehouse, Plymouth

- A Georgian Townhouse situated within the grounds of Plymouth's historic former Royal Naval Hospital, The Millfields
- Ground Floor, a large formal dining room, kitchen plus a further kitchen to the rear of the property.
- First Floor, Shower room and large Storage Cupboard, large double bedroom and a formal lounge
- Second Floor, Laundry Room, two Large double bedrooms and a family bathroom
- Third Floor, three bedrooms with one currently used as a study
- The basement, an additional self contained one bedroom apartment
- The property benefits from a well stocked and attractive walled garden to the rear with the former stable blocks providing storage and workshop space as required
- The property offers an area for car parking to the side of the property adjacent to the northern wall of the garden which could accommodate up to three cars
- The Millfields Estate offers privacy and security with an onsite security presence providing round the clock cover
- The property is a Grade 2 listed building - List Entry Number 1113317



The Square

Stonehouse, Plymouth

Step into this magnificent Grade 2 Listed Georgian Townhouse nestled within the prestigious grounds of Plymouth's historic former Royal Naval Hospital, The Millfields. Proudly presenting a unique opportunity to own a piece of history, this stunning property exudes elegance and charm at every turn.

As you enter the ground floor, you'll be greeted by a grand formal dining room, perfect for hosting lavish dinner parties and entertaining guests. Adjacent to this, you'll find a modern and sleek kitchen, complete with state-of-the-art appliances, and a further kitchen located at the rear of the property, offering convenience and ample space for culinary creations.

Venture up to the first floor, where you'll discover a luxurious shower room, a spacious storage cupboard, a large double bedroom, and a sophisticated formal lounge, ideal for relaxing and unwinding after a long day.

On the second floor, a convenient laundry room awaits, along with two generously sized double bedrooms and a family bathroom, all designed with comfort and style in mind. Ascend to the third floor, where three more bedrooms, including a versatile study, provide ample space for work or leisure pursuits.

The basement of this remarkable property features an additional self-contained one-bedroom apartment, perfect for guests or as a rental income opportunity.



The Square

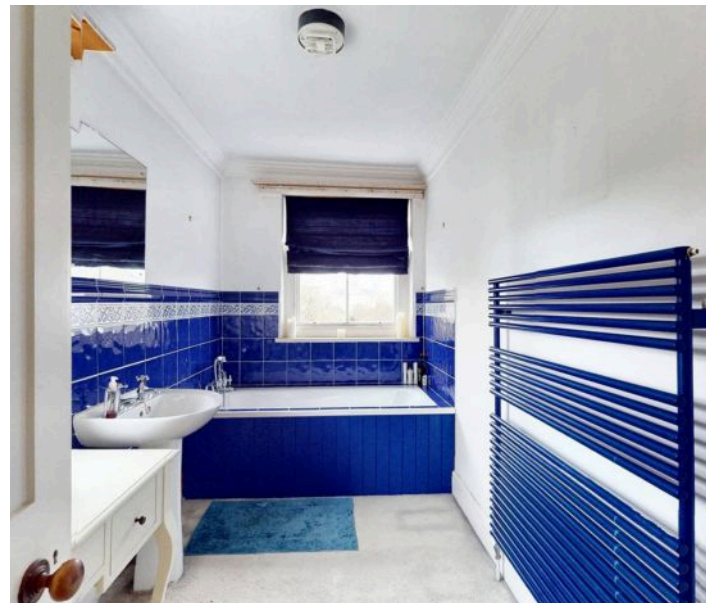
Stonehouse, Plymouth

Step outside and be captivated by the well-stocked and attractive walled garden to the rear, offering a peaceful sanctuary amidst the city bustle. Former stable blocks provide additional storage and workshop space, catering to all your needs.

Parking will never be an issue with an allocated area for up to three cars, conveniently located next to the northern wall of the garden.

Residents of The Millfields Estate benefit from unparalleled privacy and security, thanks to the onsite security presence providing round-the-clock coverage, ensuring peace of mind at all times.

Don't miss out on this rare chance to own a piece of Plymouth's heritage. Contact us today to arrange a viewing and make this extraordinary property your new home.



The Square

Stonehouse, Plymouth

The Millfields – A Brief History

The Royal Naval Hospital in Plymouth, also known as Stonehouse Hospital, was established in 1758 to provide medical care for naval personnel. Located in the Stonehouse area, it was one of the first purpose-built naval hospitals in England. Designed by Alexander Rowehead, the hospital featured an innovative layout with separate pavilions to prevent the spread of disease, a groundbreaking approach for its time.

During the Napoleonic Wars, it played a crucial role in treating wounded sailors and prisoners of war. The hospital continued to serve the Royal Navy throughout the 19th and early 20th centuries, adapting to advancements in medical practices. In 1925, it was transferred to civilian use as a general hospital before eventually closing in the late 20th century. Today, the site has been redeveloped into residential housing, retaining many of its original Georgian architectural features as part of the Millfields estate.

Tenure & Services

Tenure: Leasehold

Lease Expiry: 01/08/2994

Service Charge: £144.00 pcm

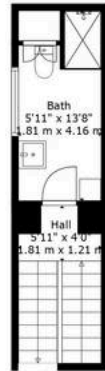
Ground Rent: £52.00 per annum

Council Tax Band: D (House) & A (Flat)

EPC: Exempt



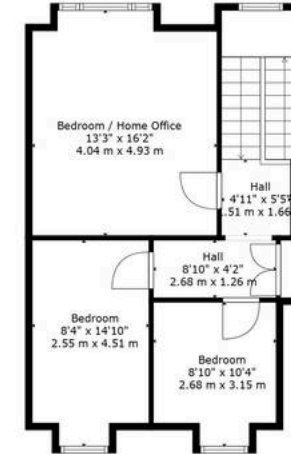




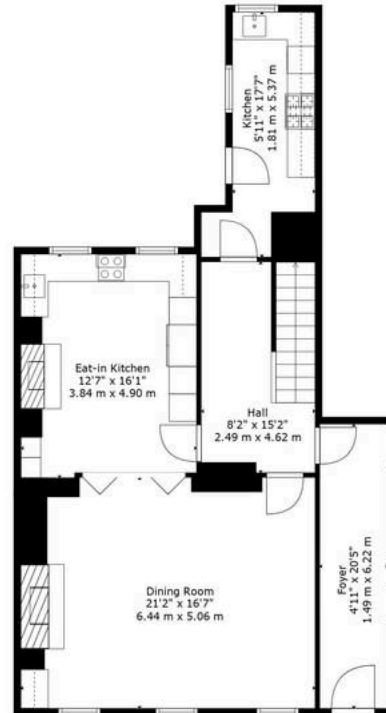
Floor 2



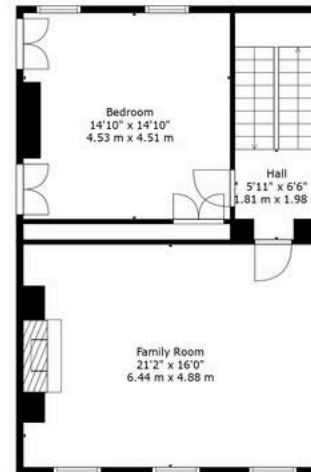
Floor 4



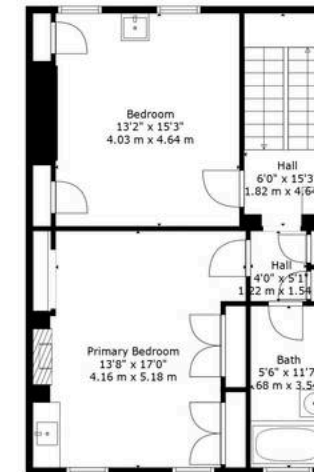
Floor 6



Floor 1



Floor 3



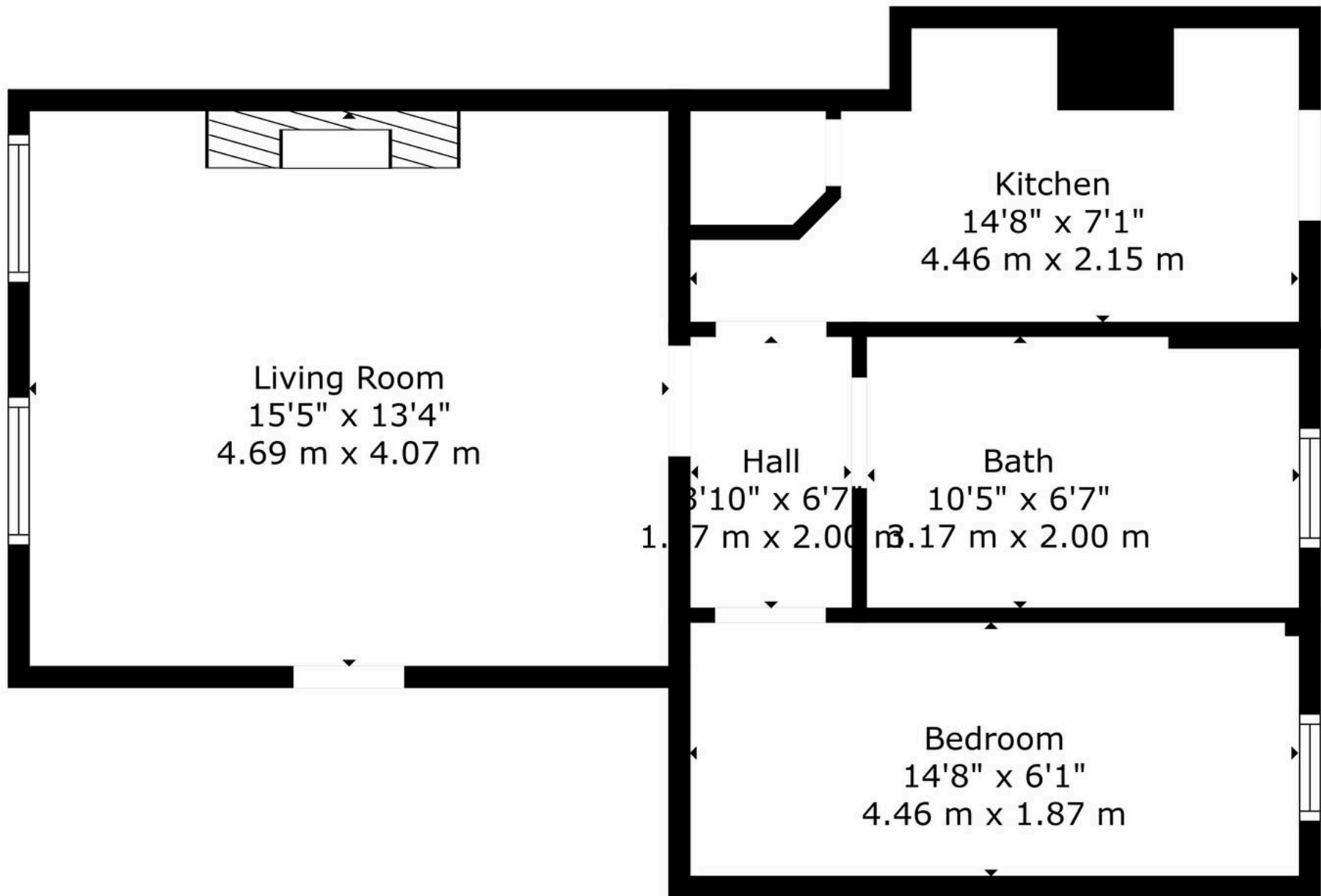
Floor 5



TOTAL: 3110 sq. ft, 288 m2
 FLOOR 1: 907 sq. ft, 84 m2, FLOOR 2: 151 sq. ft, 14 m2, FLOOR 3: 690 sq. ft, 64 m2, FLOOR 4: 151 sq. ft, 14 m2, FLOOR 5: 691 sq. ft, 64 m2, FLOOR 6: 520 sq. ft, 48 m2
 EXCLUDED AREAS: LOW CEILING: 43 sq. ft, 3 m2

Floor Plan Created By Cubicasa App. Measurements Deemed Highly Reliable But Not Guaranteed.





TOTAL: 503 sq. ft, 47 m2
FLOOR 1: 503 sq. ft, 47 m2

Floor Plan Created By Cubicasa App. Measurements Deemed Highly Reliable But Not Guaranteed.





Atwell Martin

Atwell Martin, 65 Southside Street – PL1 2LA

01752 202121

plymouthsales@atwell-martin.co.uk

plymouth.atwellmartin.co.uk/

Atwell Martin Plymouth endeavour to ensure the accuracy of property details produced and displayed. Please note that we have not tested any apparatus, equipment, fixtures, fittings or services and so cannot verify that they are connected, in working order or fit for purpose. It is imperative that the buyer of any property makes such checks, prior to purchase so as to satisfy themselves of the properties suitability for their purchase. .

