



Mizzen Road, Mount Wise, Plymouth, PL1 4GT

£350,000 FREEHOLD

**ATWELL
MARTIN**
ESTATE AGENTS



Mizzen Road

Mount Wise, Plymouth, PL1 4GT

Spectacular 4-bed terraced house in sought-after Mount Wise Estate. Elegant Georgian-style home with stunning views, cosy lounge, spacious bedrooms, private garden, and allocated parking. Ideal location with top schools, vibrant amenities, and easy transport links. Live in luxury and convenience!

Council Tax band: D

Tenure: Freehold

- Situated within the popular Mount Wise Estate, with its cricket pitch, convenience store and attractive Southern Gardens overlooking Plymouth Sound, The River Tamar across to Mount Edgcumbe
- Four bedroom 3 Storey Town House
- Georgian Style Family Home
- A fantastic Kitchen/Family Room at Ground Floor, perfect for hosting friends and family
- Lounge at First Floor Level
- Enclosed Rear Garden
- Allocated Parking Space



Mizzen Road

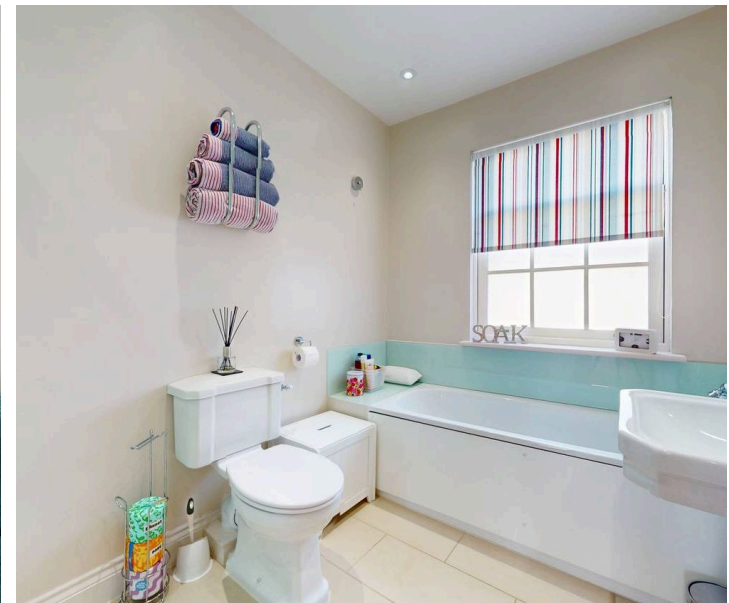
Mount Wise, Plymouth, PL1 4GT

Welcome to a spectacular 4 bedroom terraced house in the sought-after Mount Wise Estate – a vibrant community with its own cricket pitch, convenience store, and stunning Southern Gardens offering panoramic views of Plymouth Sound, The River Tamar, and Mount Edgumbe.

This three-storey Georgian-style family home exudes elegance and charm. As you step inside, you are greeted by a magnificent Kitchen/Family Room on the ground floor, the heart of the home where hosting gatherings becomes an absolute delight. Imagine creating culinary masterpieces while your loved ones gather around, sharing stories and laughter.

Venture up to the first floor and discover a cosy Lounge, the perfect spot to unwind after a long day or to indulge in a good book on a lazy Sunday afternoon. With its thoughtful layout, this house offers flexibility and comfort, ensuring every family member finds their own sanctuary within the home.

The property boasts four well-appointed bedrooms, providing ample space for a growing family or visiting guests. The Enclosed Rear Garden offers a private oasis where you can enjoy alfresco dining, sip your morning coffee surrounded by nature, or simply bask in the sun with a good book in hand.



Mizzen Road

Mount Wise, Plymouth, PL1 4GT

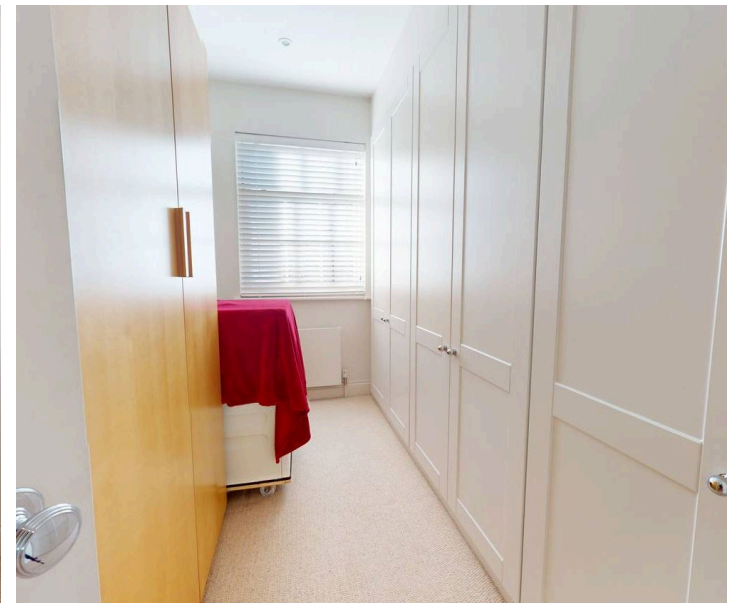
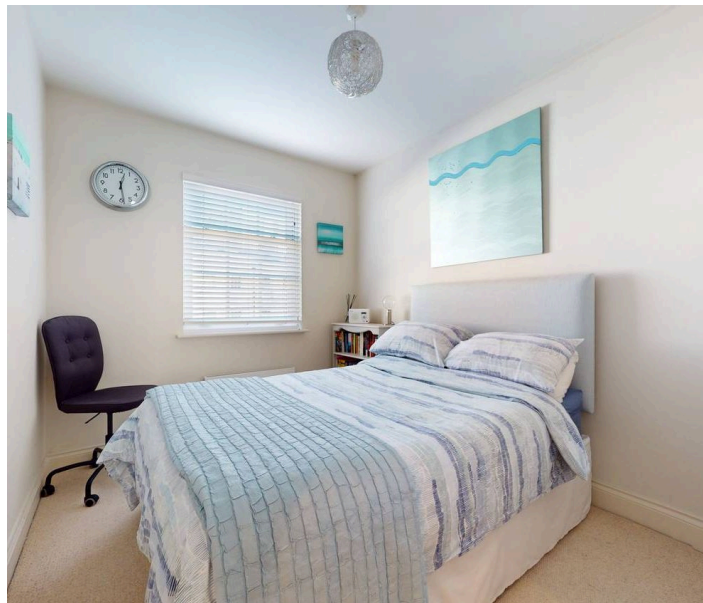
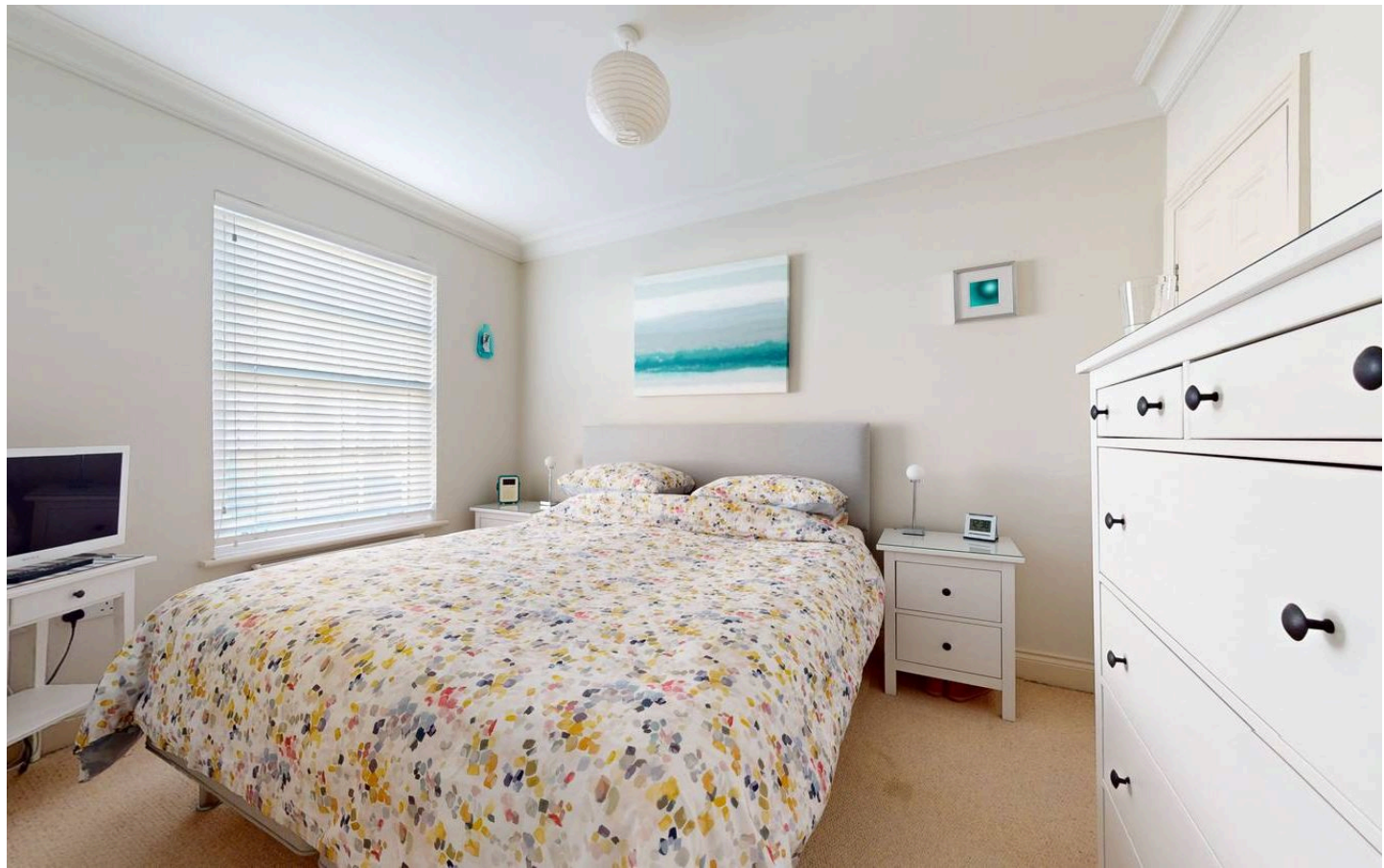
To top it off, an Allocated Parking Space adds convenience to your daily routine, ensuring that you never have to worry about finding a spot after a long day at work or a shopping trip.

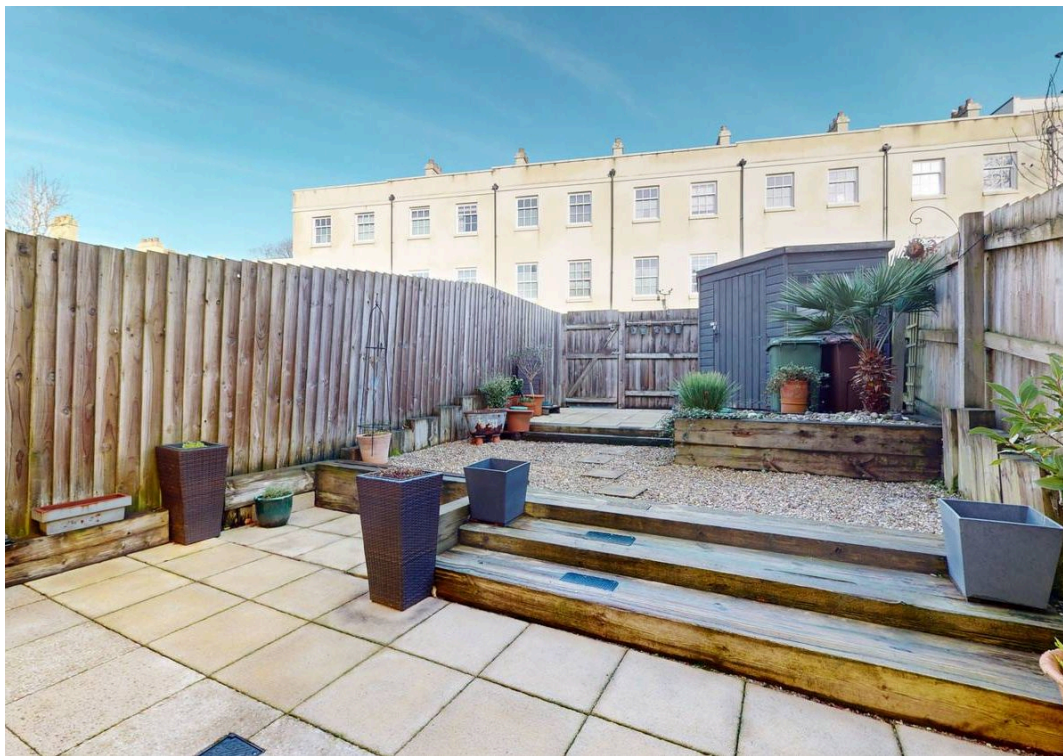
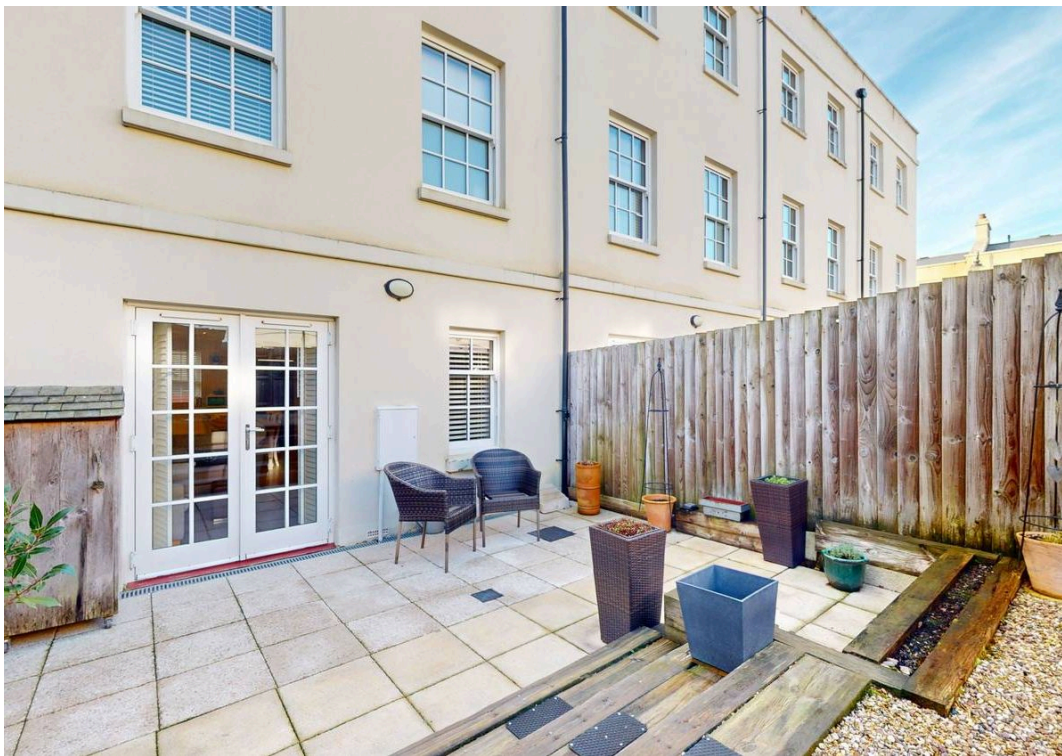
Don't miss the opportunity to make this beautiful house your home sweet home. Contact us today for more information and to arrange a viewing. Discover the luxury, comfort, and convenience that await you in this exceptional property.

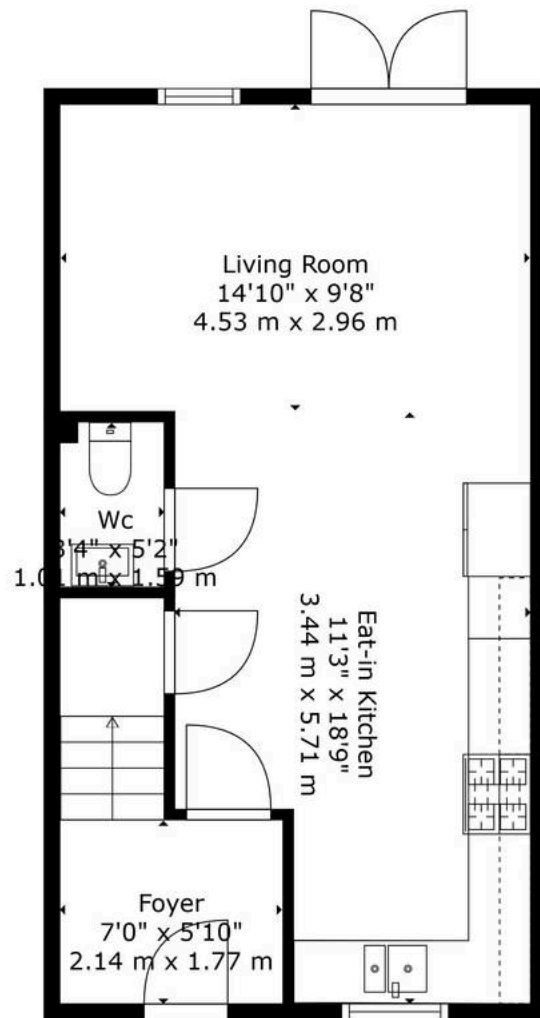
LOCATION

Nestled within the prestigious Mount Wise development, 7 Mizzen Road offers an unparalleled living experience that combines modern convenience with a rich maritime heritage. This highly sought-after location delivers the perfect balance of tranquil surroundings and vibrant city amenities, making it a truly enviable place to call home.

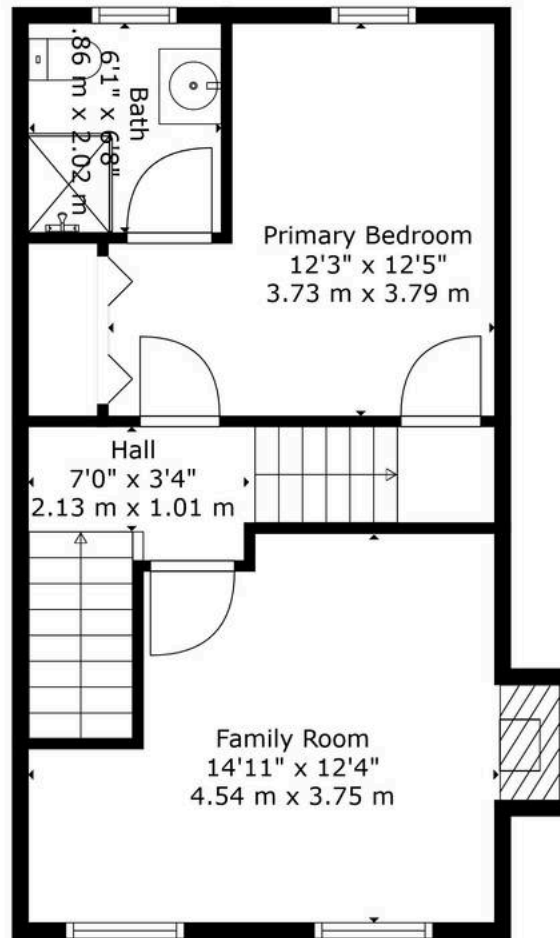
Mount Wise, often referred to as the "Village by the Sea," is celebrated for its community feel, enhanced by thoughtfully planned green spaces and leisure facilities. A short walk takes you to Devonport Park, a Victorian gem ideal for weekend strolls, picnics, and outdoor activities. For everyday needs, the nearby supermarkets and local independent stores provide convenience, while the bustling Royal William Yard offers an array of trendy restaurants, cafés, and boutiques.



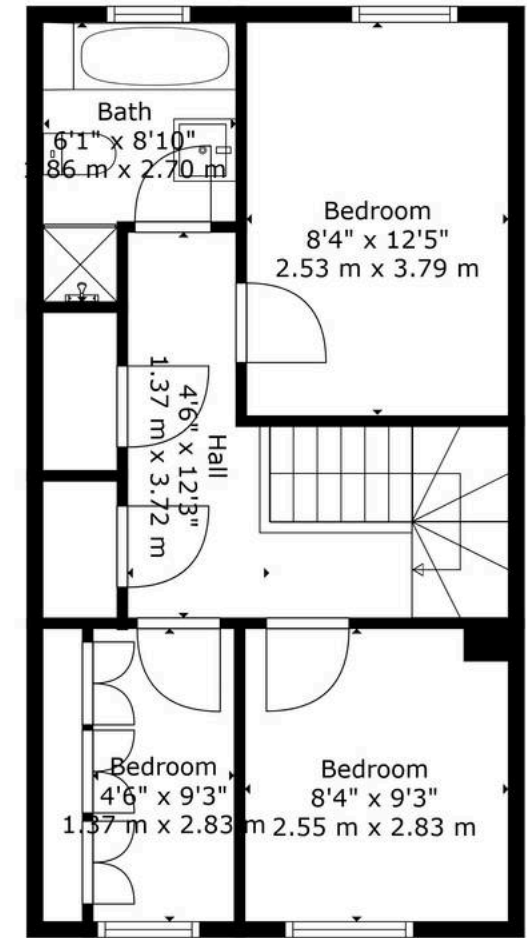




Floor 1



Floor 2



Floor 3



TOTAL: 1277 sq. ft, 119 m²
 FLOOR 1: 425 sq. ft, 40 m², FLOOR 2: 430 sq. ft, 40 m², FLOOR 3: 422 sq. ft, 39 m²

Floor Plan Created By Cubicasa App. Measurements Deemed Highly Reliable But Not Guaranteed.





Atwell Martin

Atwell Martin, 65 Southside Street – PL1 2LA

01752 202121

plymouthsales@atwell-martin.co.uk

plymouth.atwellmartin.co.uk/

Atwell Martin Plymouth endeavour to ensure the accuracy of property details produced and displayed. Please note that we have not tested any apparatus, equipment, fixtures, fittings or services and so cannot verify that they are connected, in working order or fit for purpose. It is imperative that the buyer of any property makes such checks, prior to purchase so as to satisfy themselves of the properties suitability for their purchase. .

