



Endeavour Court, PLYMOUTH, PL1 5AX

£160,000 LEASEHOLD



Endeavour Court

PLYMOUTH, PL1 5AX

Top floor 2-bed apartment in central location with ample storage, generous kitchen diner, large bathroom, south-facing balcony, garage parking. Ideal investment with tenant in place. Contact us for a viewing today.

Council Tax band: B

Tenure: Leasehold

- Top Floor Two Bedroom Apartment
- Ample Storage Space
- Generous Kitchen Diner
- South Facing Balcony
- Garage Parking
- Ideal Investment with Tenant in Situ
- Large Three Piece Bathroom Suite
- Central Location



Endeavour Court

PLYMOUTH, PL1 5AX

Welcome to this top floor two-bedroom apartment, situated in a central location! This property boasts ample storage space throughout, perfect for keeping your living space clutter-free. The generous kitchen diner is a culinary dream, offering a space for entertaining family and friends. The large three-piece bathroom suite provides a relaxing escape after a long day.

Step out onto the south-facing balcony and soak up the sun while enjoying your morning coffee.

This apartment comes with the added convenience of garage parking, ensuring your vehicle is safe and secure. Currently serving as an ideal investment with a tenant already in situ, this home offers a hassle-free option for savvy buyers.

Don't miss out on the opportunity to make this stunning property your own. Contact us today for more information and to schedule a viewing.

Tenure & Services

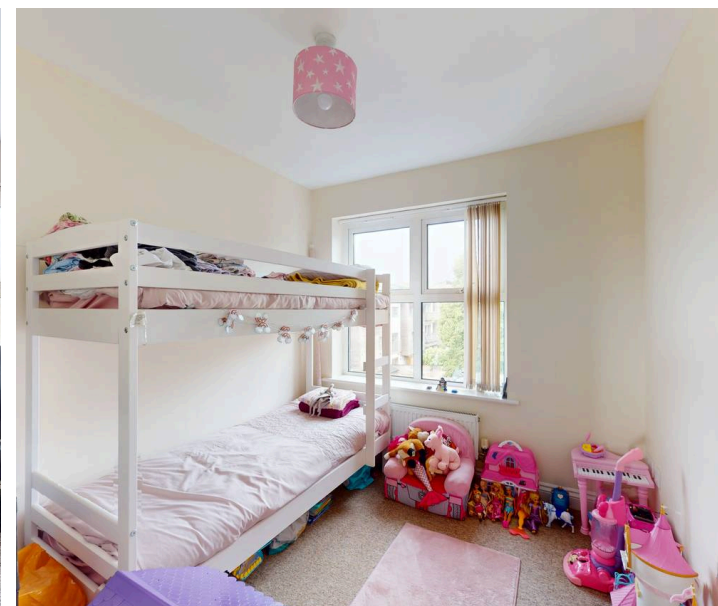
Council Tax band: B

Tenure: Leasehold

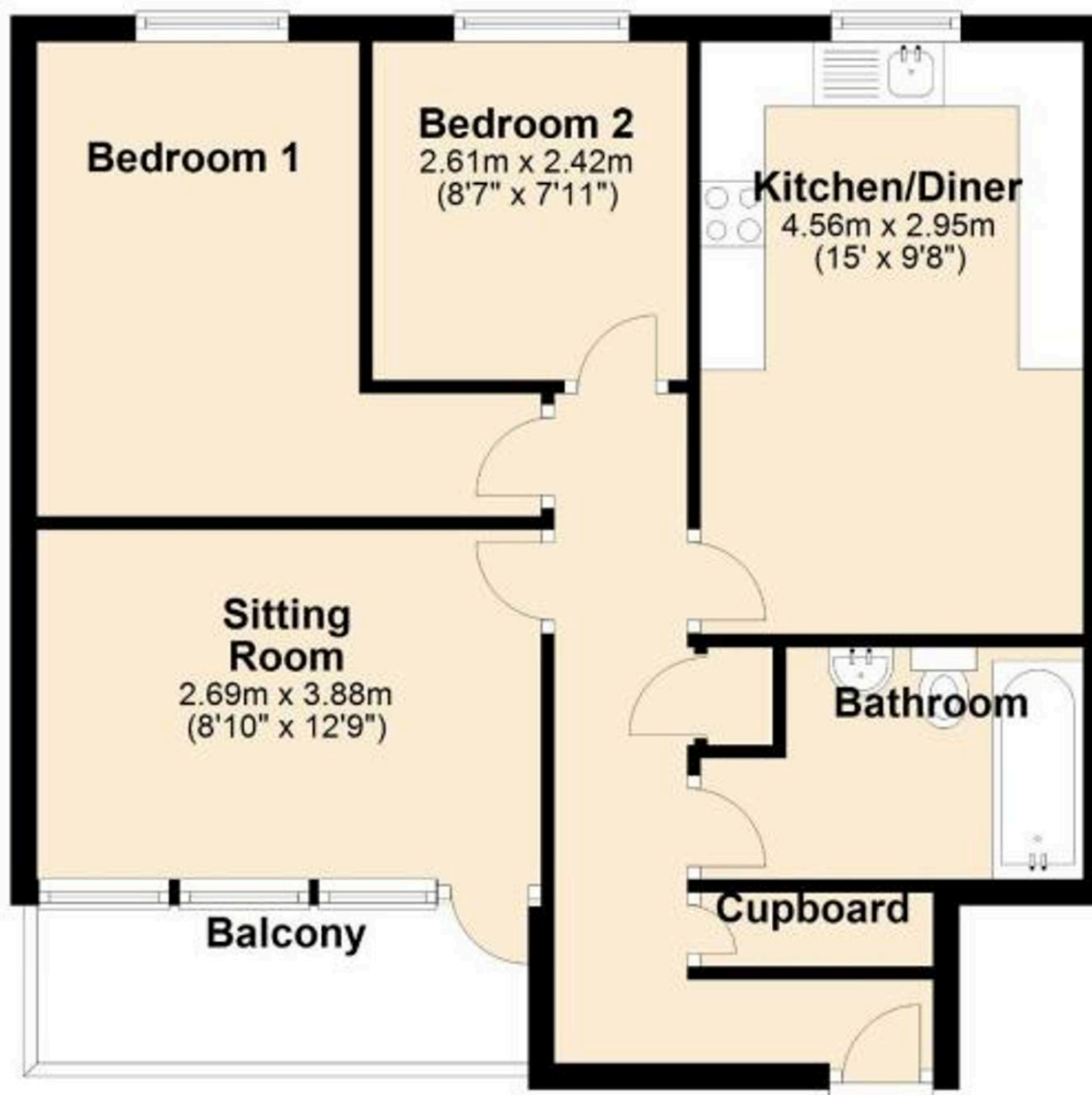
Service Charge: £1300 per annum

Ground Rent: £250 per annum

Lease Expiry: 11/11/2149



Ground Floor



Floor Plans are for guidance purposes only - although we make every attempt to show them accurately they should not be used for planning purposes.

Plan produced using PlanUp.



Atwell Martin

Atwell Martin, 65 Southside Street – PL1 2LA

01752 202121

plymouthsales@atwell-martin.co.uk

plymouth.atwellmartin.co.uk/

Atwell Martin Plymouth endeavour to ensure the accuracy of property details produced and displayed. Please note that we have not tested any apparatus, equipment, fixtures, fittings or services and so cannot verify that they are connected, in working order or fit for purpose. It is imperative that the buyer of any property makes such checks, prior to purchase so as to satisfy themselves of the properties suitability for their purchase. .

