



Valletort Road, Plymouth, PL1 5PH

£375,000 FREEHOLD EPC: D





## Valletort Road

Plymouth, PL1 5PH

Stunning 5-bed Victorian terraced house in sought-after neighbourhood. Immaculately presented, with large kitchen diner, spacious lounge, basement en-suite, and close to schools/amenities. Unique blend of Victorian charm and modern convenience.

Council Tax band: C

Tenure: Freehold

- A three storey Five Bedroom Victorian terraced house
- Large Kitchen Diner
- Spacious Lounge
- Utility/Breakfast Room
- Two Double Bedrooms in the Basement
- Rear Courtyard
- Generous Family Bathroom
- Close to good schools and local amenities
- Immaculately presented



# Valletort Road

Plymouth, PL1 5PH

Step into this stunning three-storey, five-bedroom Victorian terraced house in the heart of a sought-after neighbourhood. This immaculately presented property exudes sophistication and charm.

As you enter, you are greeted by a large kitchen diner, perfect for entertaining guests or enjoying family meals. The spacious lounge offers a cosy retreat, ideal for relaxing after a long day. The utility/breakfast room provides convenience and additional space for your daily needs.

Venture downstairs to discover two double bedrooms and an en-suite in the basement, offering privacy and tranquillity.

Located close to good schools and local amenities, this terraced house is ideal for families looking for a convenient and vibrant neighbourhood to call home.

With its elegant design and thoughtful layout, this property offers a unique blend of comfort and style. The design enhances the flow of natural light, creating a welcoming atmosphere throughout.

This property is a rare find, combining Victorian charm with modern convenience.





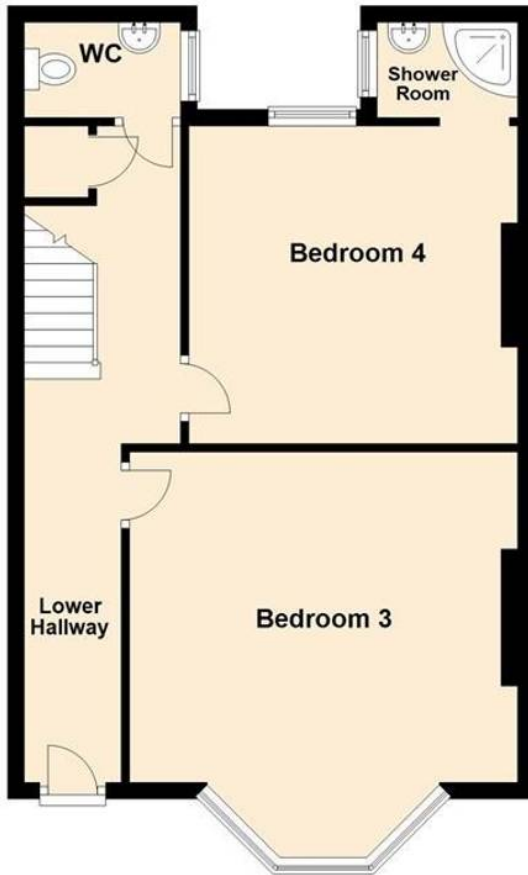
### Ground Floor

Approx. 61.5 sq. metres (662.3 sq. feet)



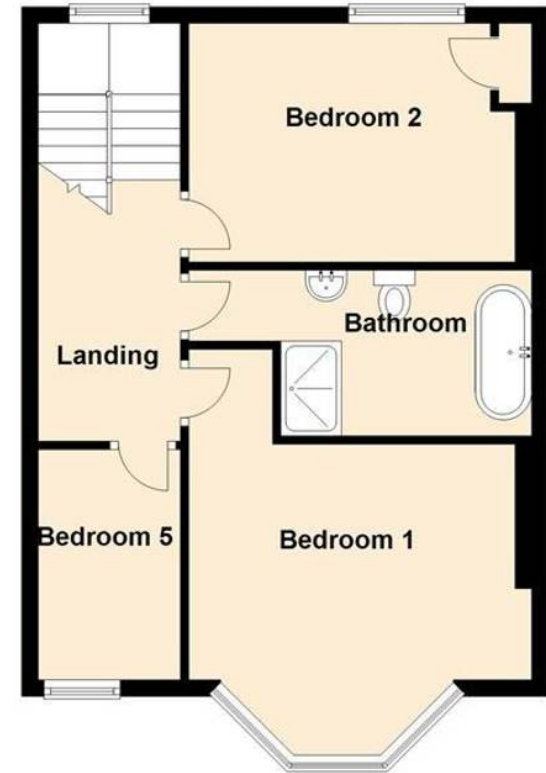
### Lower Ground Floor

Approx. 39.4 sq. metres (424.3 sq. feet)



### First Floor

Approx. 48.1 sq. metres (517.6 sq. feet)



Total area: approx. 149.0 sq. metres (1604.3 sq. feet)



## Atwell Martin

Atwell Martin, 65 Southside Street - PL1 2LA

01752 202121

[plymouthsales@atwell-martin.co.uk](mailto:plymouthsales@atwell-martin.co.uk)

[plymouth.atwellmartin.co.uk/](http://plymouth.atwellmartin.co.uk/)

Atwell Martin Plymouth endeavour to ensure the accuracy of property details produced and displayed. Please note that we have not tested any apparatus, equipment, fixtures, fittings or services and so cannot verify that they are connected, in working order or fit for purpose. It is imperative that the buyer of any property makes such checks, prior to purchase so as to satisfy themselves of the properties suitability for their purchase. .