



New Street, Plymouth, PL1 2NA

£375,000 FREEHOLD EPC: D





## New Street

Plymouth, PL1 2NA

4-bed terraced house in The Barbican with modern kitchen, separate lounge, balcony, home office space. Generous bedrooms, two parking spaces, and great investment potential. A must-see! Schedule a viewing now.

Council Tax band: D

Tenure: Freehold

- Large Kitchen/Dining Room
- Located in the Heart of The Barbican
- Working From Home Potential
- Separate Lounge
- South Facing Balcony
- Utility & Cloakroom
- Two Allocated Parking Spaces
- End of Terrace
- Holiday Let Potential
- 4 Bedroom TownHouse



# New Street

Plymouth, PL1 2NA

Welcome to this stunning 4-bedroom terraced house nestled in the heart of The Barbican! This property is a blend of luxury and comfort, offering a unique living experience in an unbeatable location.

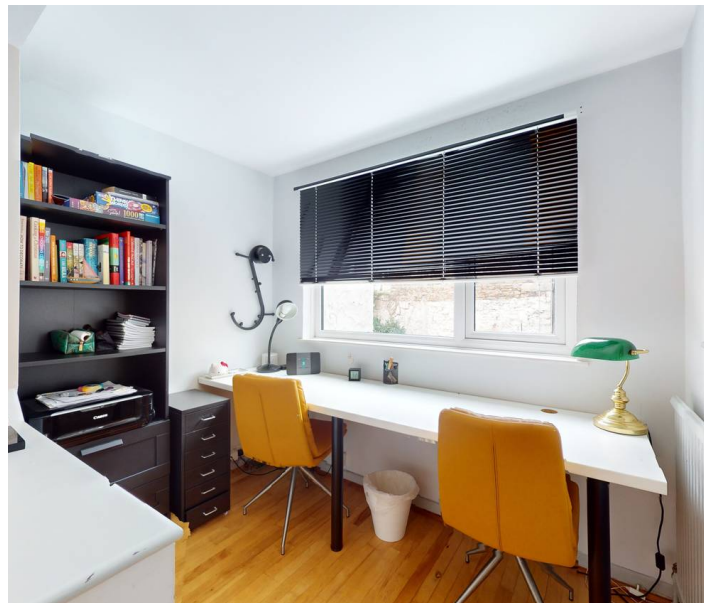
As you step inside, you are greeted by a spacious and modern large kitchen/dining room, perfect for hosting family gatherings and entertaining friends. The separate lounge provides a cosy retreat for relaxation, while the balcony floods the space with natural light, creating a warm and inviting atmosphere.

With the increasing trend of working from home, this property boasts a dedicated space ideal for a home office, ensuring productivity and comfort go hand in hand. The utility room and cloakroom add convenience to every-day living, making chores a breeze.

The layout of this end-of-terrace townhouse is thoughtfully designed, offering a seamless flow from room to room. Each of the four bedrooms is generously sized, providing ample space for relaxation and privacy. Whether you're looking for a peaceful sanctuary or a vibrant hub for social gatherings, this property caters to your every need.

Two allocated parking spaces provide added convenience for residents, ensuring you always have a secure place for your vehicles.

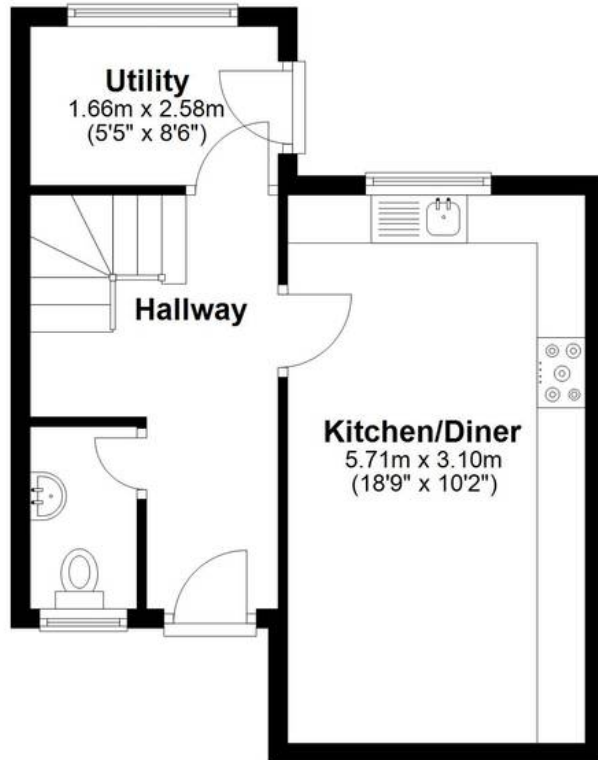
- Large Kitchen/Dining Room
- Located in the Heart of The Barbican
- Working From Home Potential
- Separate Lounge





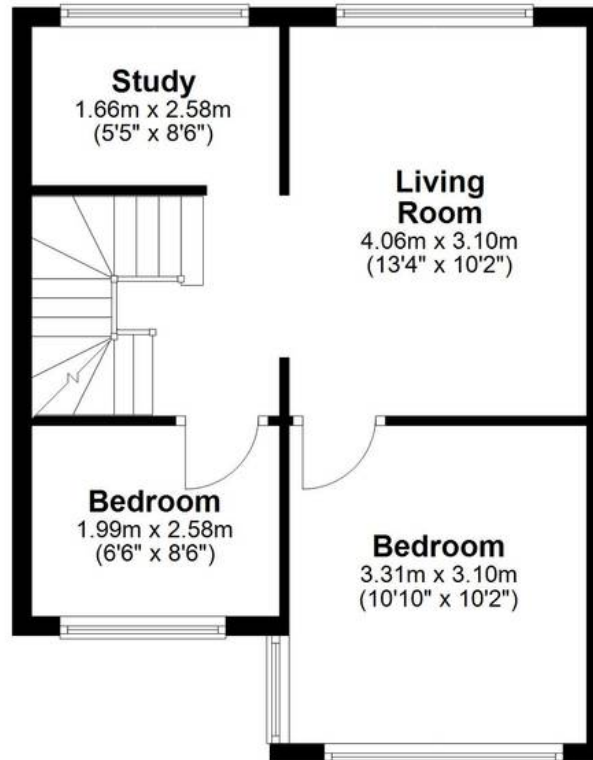
### Ground Floor

Approx. 33.8 sq. metres (364.0 sq. feet)



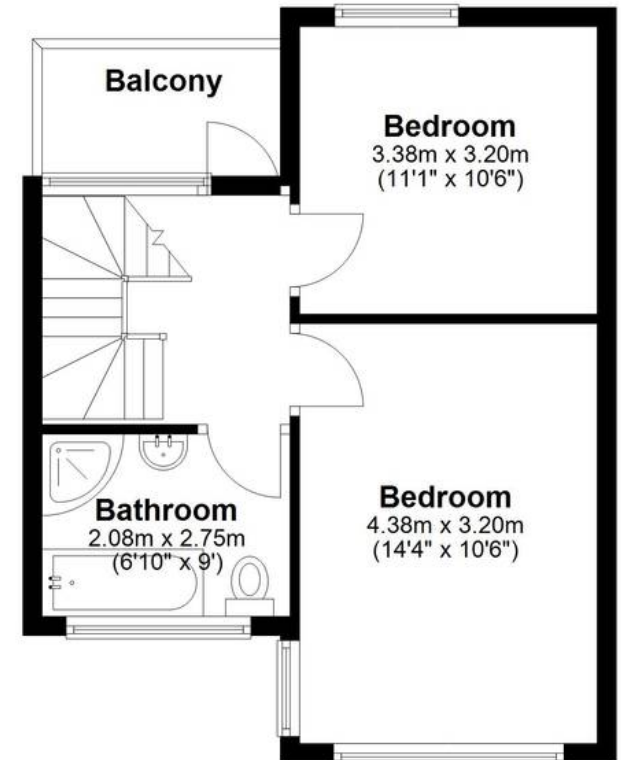
### First Floor

Approx. 39.6 sq. metres (426.7 sq. feet)



### Second Floor

Approx. 34.9 sq. metres (375.9 sq. feet)



Total area: approx. 108.4 sq. metres (1166.6 sq. feet)

**New Street, Barbican**



## Atwell Martin

Atwell Martin, 65 Southside Street - PL1 2LA

01752 202121

[plymouthsales@atwell-martin.co.uk](mailto:plymouthsales@atwell-martin.co.uk)

[plymouth.atwellmartin.co.uk/](http://plymouth.atwellmartin.co.uk/)

Atwell Martin Plymouth endeavour to ensure the accuracy of property details produced and displayed. Please note that we have not tested any apparatus, equipment, fixtures, fittings or services and so cannot verify that they are connected, in working order or fit for purpose. It is imperative that the buyer of any property makes such checks, prior to purchase so as to satisfy themselves of the properties suitability for their purchase. .