



Osborne Court, Osborne Place, Lockyer Street, PL1 2PX

£250,000 SHARE OF FREEHOLD EPC: C





Osborne Court

Osborne Place, Lockyer Street, Plymouth,
PL1 2PX

Stylish 2-bed apartment on Third Floor of renovated building with lift access. Stunning views of The Hoe from all rooms. Spacious lounge/diner, kitchen, and well-designed shower room. Ample storage.

Council Tax band: D

Tenure: Share of Freehold

- Two Bedroom Apartment
- Located on the Third Floor with Lift Access
- Shower Room
- Views of The Hoe from all Three Rooms
- Spacious Lounge/Diner
- Separate Kitchen
- Ample Storage Cupboards
- Secure Gated Parking



Property Tenure: Share of Freehold

Lease length: 985 Years

Service Charge: £1850 per annum (including water rates)

Ground Rent: £0

Council Tax - D

Osborne Court

Osborne Place, Lockyer Street, Plymouth, PL1 2PX

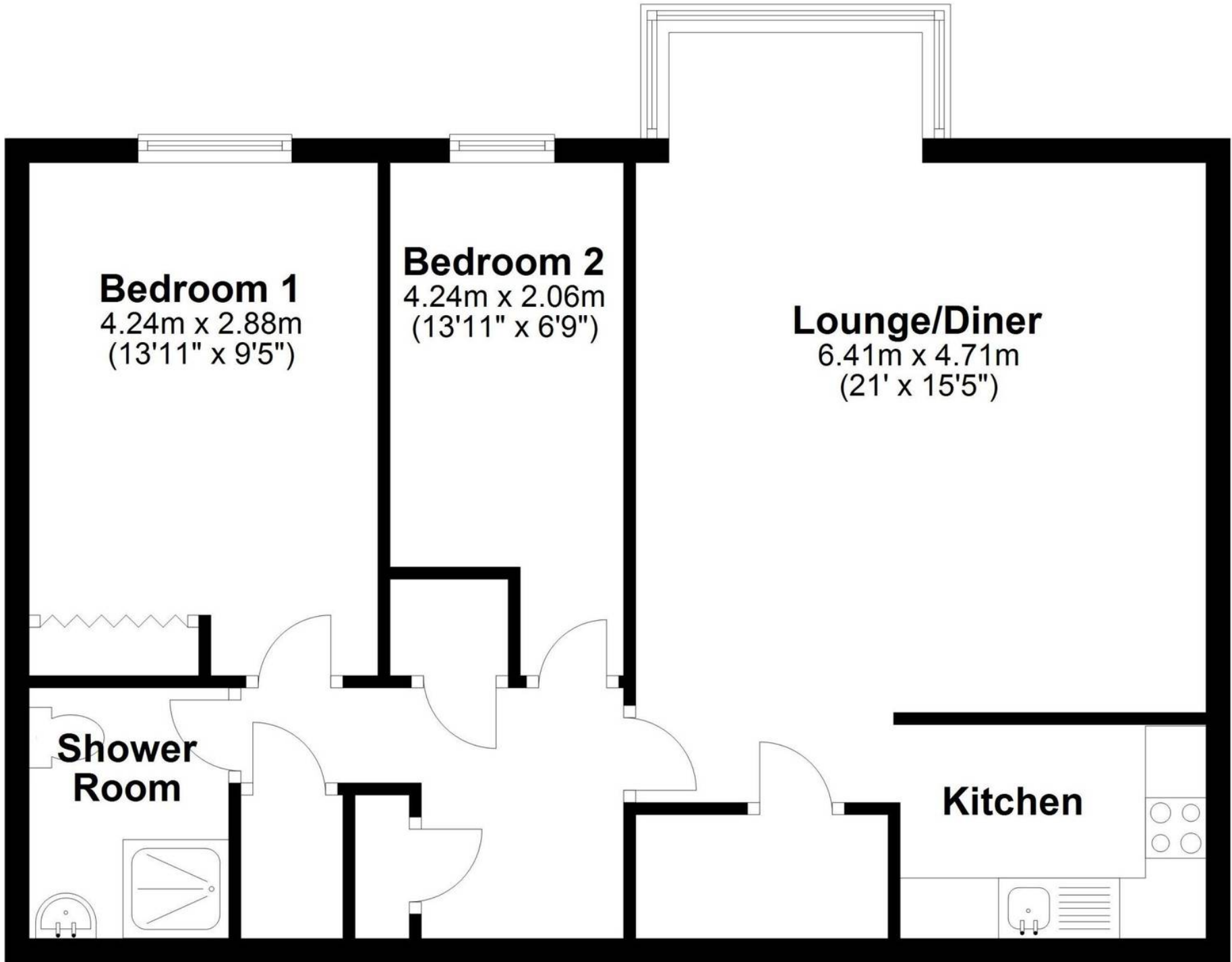
Welcome to this 2-bedroom apartment with modern style. Located on the Third Floor of a well-appointed building with convenient lift access, and recently renovated communal areas.

As you step inside, you are greeted by a harmonious blend of design and elegance. The apartment has two bedrooms. The views of The Hoe from all three rooms create a picturesque backdrop, offering a sense of tranquillity and connection to the bustling city below.

The heart of this exquisite property is the spacious lounge/diner, ideal for entertaining guests or unwinding after a long day. Natural light floods the room, illuminating the décor and creating a warm ambience. There is a separate kitchen, equipped with appliances and sleek finishes.

The apartment features a thoughtfully designed shower room. Ample storage cupboards throughout the property provide practical solutions for any homeowner, ensuring a clutter-free living space.





Bedroom 1
4.24m x 2.88m
(13'11" x 9'5")

Bedroom 2
4.24m x 2.06m
(13'11" x 6'9")

Lounge/Diner
6.41m x 4.71m
(21' x 15'5")

Shower Room

Kitchen



Atwell Martin

Atwell Martin, 65 Southside Street – PL1 2LA

01752 202121

plymouthsales@atwell-martin.co.uk

plymouth.atwellmartin.co.uk/

Atwell Martin Plymouth endeavour to ensure the accuracy of property details produced and displayed. Please note that we have not tested any apparatus, equipment, fixtures, fittings or services and so cannot verify that they are connected, in working order or fit for purpose. It is imperative that the buyer of any property makes such checks, prior to purchase so as to satisfy themselves of the properties suitability for their purchase. .