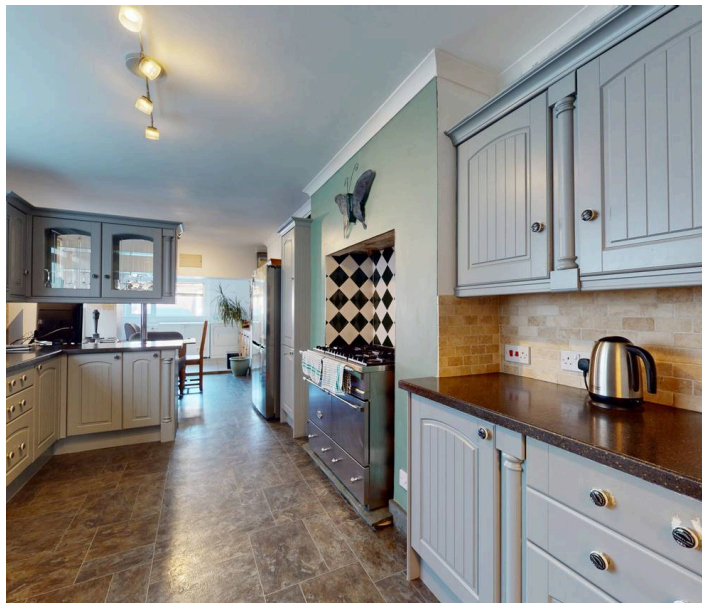




Durnford Street, Plymouth, PL1 3QR

£695,000 FREEHOLD EPC: D

**ATWELL
MARTIN**
ESTATE AGENTS



Durnford Street

Plymouth, PL1 3QR

Luxurious 5-bed terraced house on Durnford Street, Stonehouse. Stunning views over Stonehouse Pool & Cornish coast. Elegant living spaces, master with ensuite, sunroom, gardens, off-road parking. Near Royal William Yard. Freehold. Contact for a viewing.

Council Tax band: E

Tenure: Freehold

- A wonderful Georgian townhouse situated on the ever popular Durnford Street, Stonehouse
- Accommodation arranged over four storeys
- Offering views out over Stonehouse Pool towards the Cornish coast
- Accommodation includes a Living room, Dining room, Large kitchen, Master Bedroom with ensuite, second bedroom with ensuite, two further bedrooms and a large bathroom to the second floor and a sun room
- Gardens to both front and rear with gated access providing off road parking to the rear.
- Conveniently situated for ease of access to the wonderful Royal William Yard and its range of bars and restaurants
- A thriving local community with Stonehouse Lawn Tennis club close at hand
- This property is offered Freehold

Durnford Street

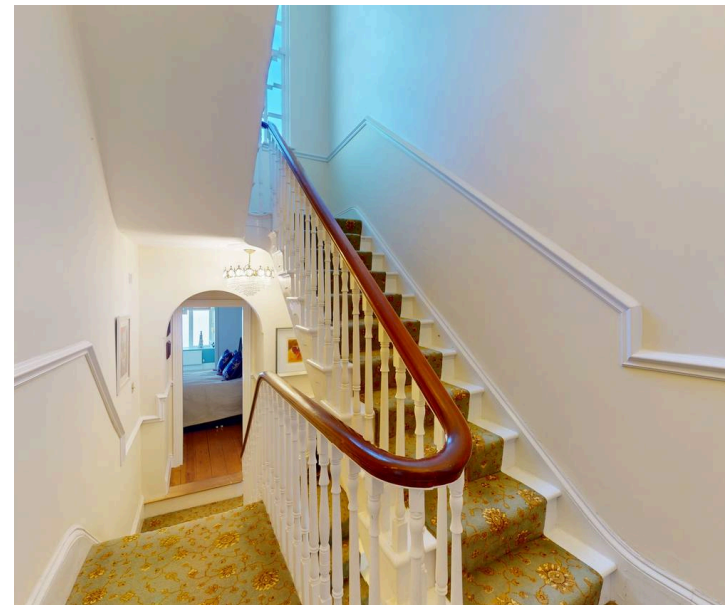
Plymouth, PL1 3QR

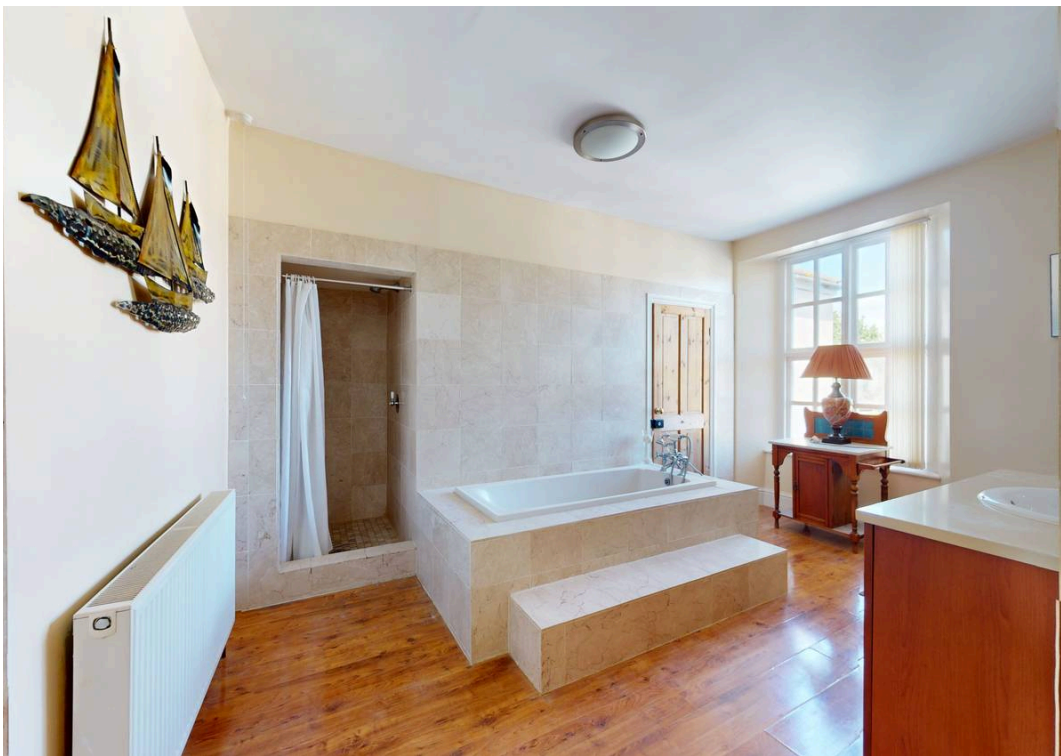
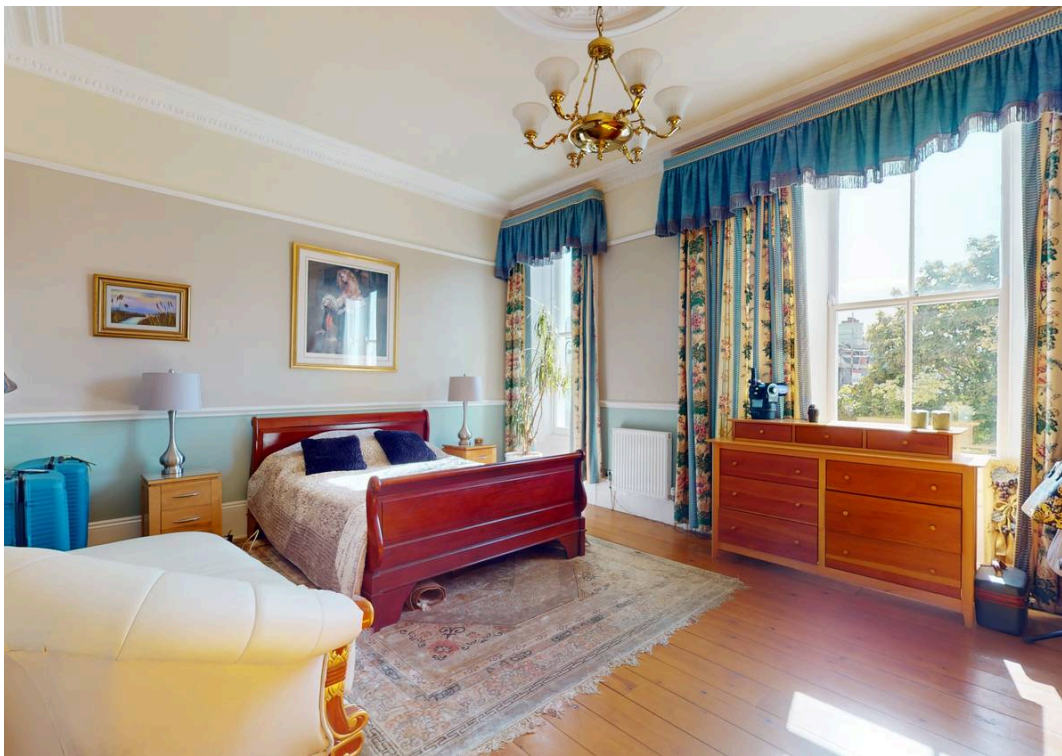
A wonderful home, this exquisite 5 bedroom terraced house nestled on the prestigious Durnford Street in the heart of Stonehouse. This magnificent Georgian townhouse boasts views overlooking the picturesque Stonehouse Pool towards the stunning Cornish coast.

Spread across four storeys, the accommodation is meticulously designed, featuring a spacious living room, elegant dining room, large kitchen, master bedroom with ensuite, a second bedroom with ensuite, two additional bedrooms, a generous bathroom, and a charming sunroom.

With front and rear gardens and gated access for off-road parking, this property offers both elegance and convenience. Located near the renowned Royal William Yard with its array of upscale bars and restaurants, residents can relish in a thriving local community, including proximity to Stonehouse Lawn Tennis Club.

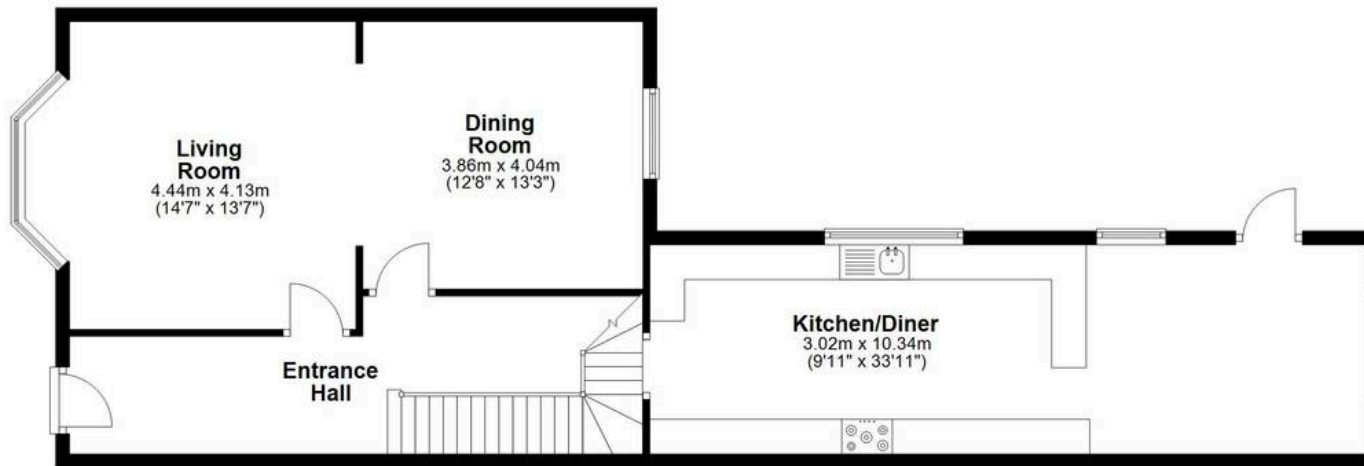
Don't miss the opportunity to own this Freehold gem! Contact us now to arrange a viewing and step into a world of unparalleled luxury living.





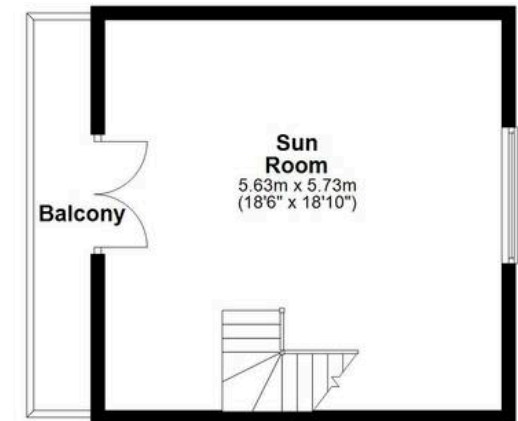
Ground Floor

Approx. 83.5 sq. metres (899.1 sq. feet)



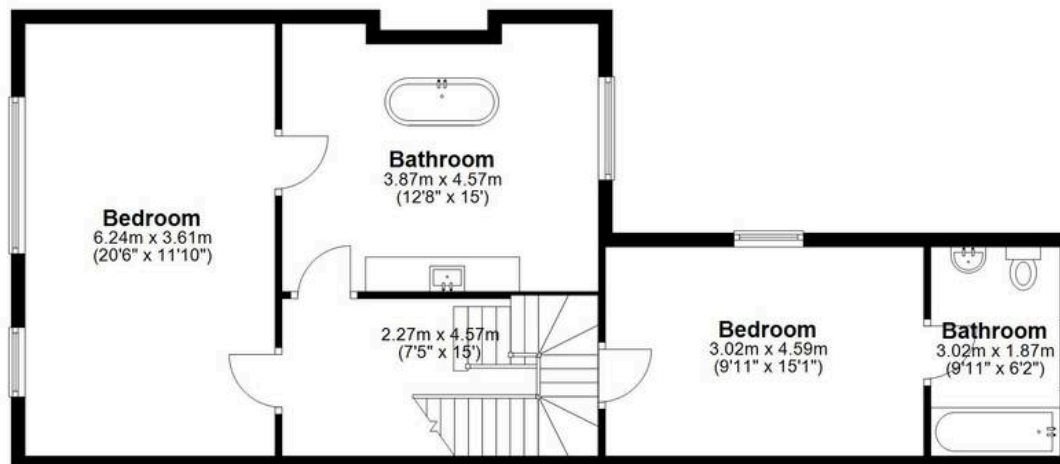
Third Floor

Approx. 32.3 sq. metres (347.2 sq. feet)



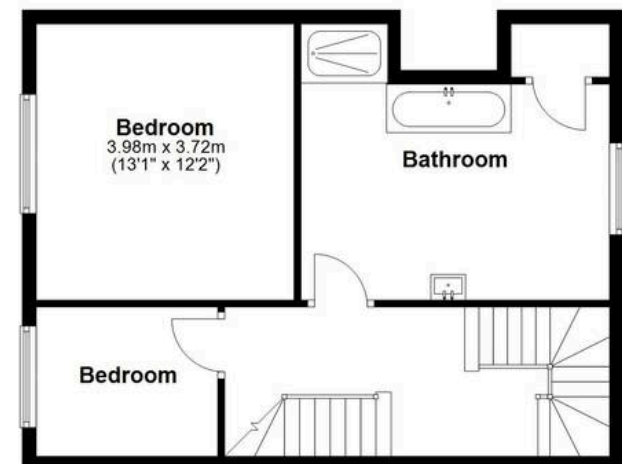
First Floor

Approx. 71.1 sq. metres (765.5 sq. feet)



Second Floor

Approx. 50.0 sq. metres (538.5 sq. feet)



Total area: approx. 236.9 sq. metres (2550.4 sq. feet)

Durnford Street, Plymouth



Atwell Martin

Atwell Martin, 65 Southside Street – PL1 2LA

01752 202121

plymouthsales@atwell-martin.co.uk

plymouth.atwellmartin.co.uk/

Atwell Martin Plymouth endeavour to ensure the accuracy of property details produced and displayed. Please note that we have not tested any apparatus, equipment, fixtures, fittings or services and so cannot verify that they are connected, in working order or fit for purpose. It is imperative that the buyer of any property makes such checks, prior to purchase so as to satisfy themselves of the properties suitability for their purchase. .

