



Flagstaff Walk, Plymouth, PL1 4SH

£270,000 LEASEHOLD EPC: B





## Flagstaff Walk

Plymouth, PL1 4SH

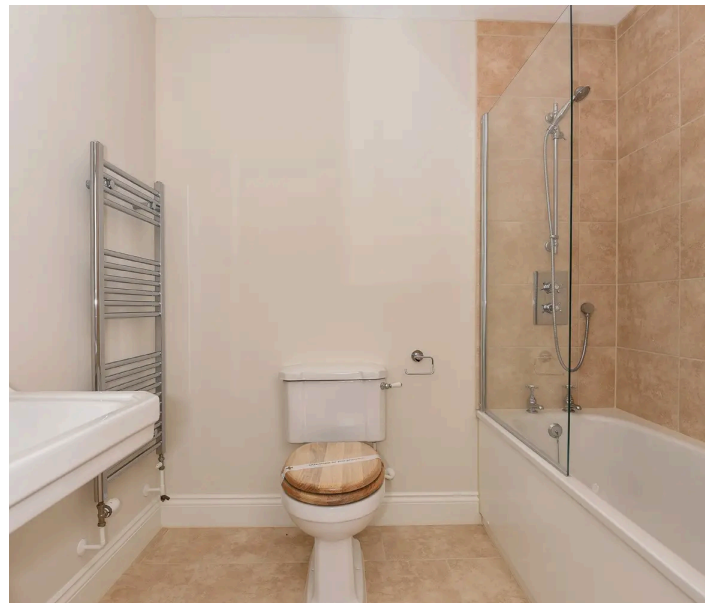
Ground floor 2-bed apartment with en suite, underfloor heating, high gloss kitchen with integrated appliances, terrace with water views.

Exclusive access to communal garden and allocated parking space.

Council Tax band: TBD

Tenure: Leasehold

- Two Double Bedrooms
- Ground Floor Apartment
- Terrace with Water Views
- Access to Scott House Private Garden
- Underfloor Heating
- High Gloss Fitted Kitchen
- Integrated Appliances
- Open Plan Living Area
- En Suite to Main Bedroom
- Allocated Parking Space



# Flagstaff Walk

Plymouth, PL1 4SH

This 2-bedroom apartment offers a harmonious blend of contemporary design and luxurious living. The apartment boasts an en suite bathroom in the master bedroom, underfloor heating throughout for optimal comfort, and a high gloss fitted kitchen equipped with integrated appliances. The open plan living area seamlessly transitions to a charming terrace, where stunning water views create a serene backdrop for relaxation and entertainment.

Residents of this exclusive property enjoy access to the communal Scott House Private Garden, a picturesque space ideal for outdoor gatherings or quiet moments of repose. The meticulously landscaped grounds offer a tranquil retreat, perfectly complementing the modern elegance found within the apartment. With its sought-after amenities, including underfloor heating and a terrace overlooking the serene water views, this property presents a rare opportunity for luxurious living in a prime location.

Tenure: Leasehold

## LEASEHOLD INFORMATION

Lease: 999 years Service Charge: Approx £TBC

Ground Rent: £250 per annum

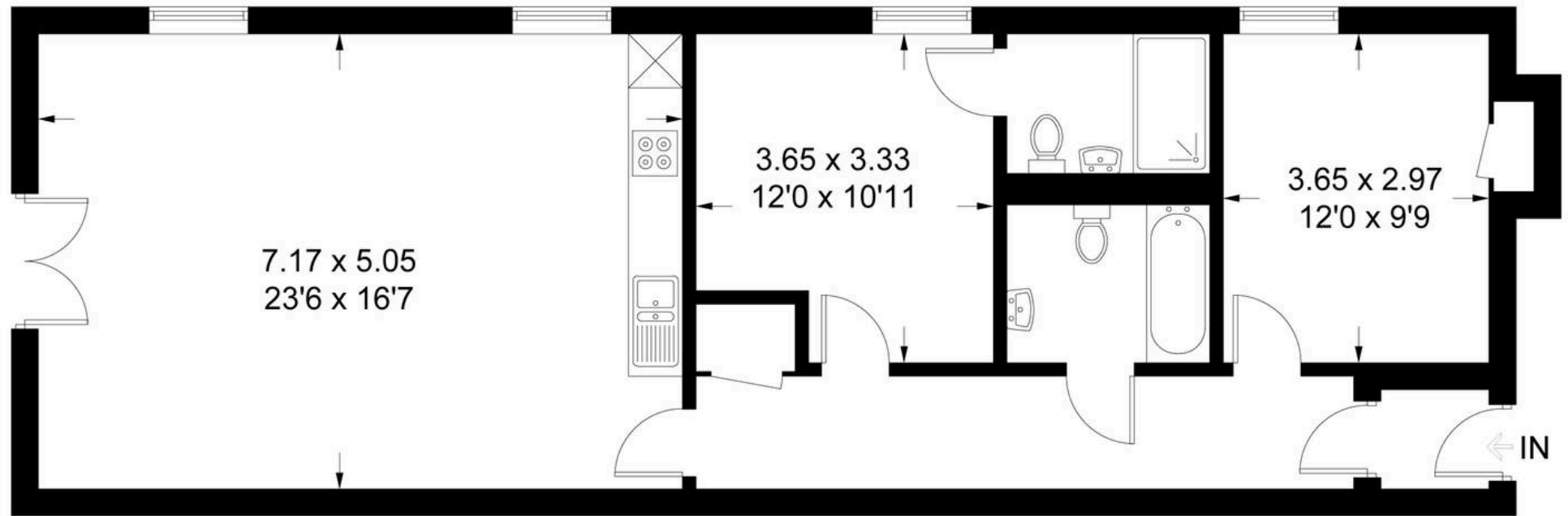
## Allocated parking

1 Parking Space



### 3 Flagstaff Walk, Mount Wise, Plymouth

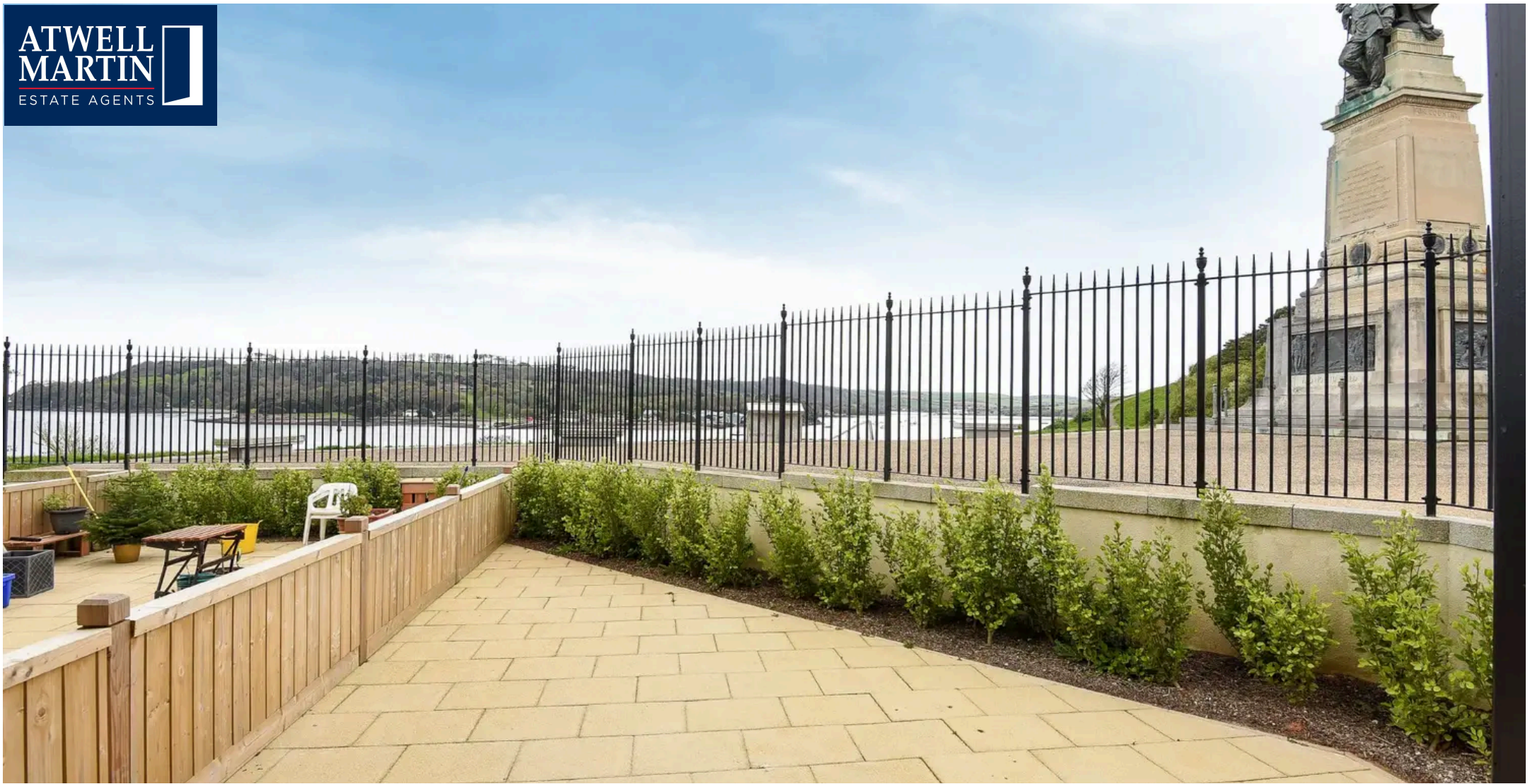
Approximate Gross Internal Area = 80.0 sq m / 861 sq ft



### Ground Floor

Illustration for identification purposes only, measurements are approximate,  
not to scale. FloorplansUsketch.com © 2016 (ID275090)





## Atwell Martin

Atwell Martin, 65 Southside Street – PL1 2LA

01752 202121

[plymouthsales@atwell-martin.co.uk](mailto:plymouthsales@atwell-martin.co.uk)

[plymouth.atwellmartin.co.uk/](http://plymouth.atwellmartin.co.uk/)

Atwell Martin Plymouth endeavour to ensure the accuracy of property details produced and displayed. Please note that we have not tested any apparatus, equipment, fixtures, fittings or services and so cannot verify that they are connected, in working order or fit for purpose. It is imperative that the buyer of any property makes such checks, prior to purchase so as to satisfy themselves of the properties suitability for their purchase. .

