



Peacock Lane, Plymouth, PL4 0DQ

£120,000 LEASEHOLD EPC: C







## Peacock Lane

Plymouth, PL4 0DQ

Exclusive 1 bed flat in historic Barbican with stylish open-plan living area, modern kitchen, integrated appliances, high ceilings, built-in wardrobes. Ideal investment opportunity for sophisticated city living.

Council Tax band: B

Tenure: Leasehold

- First Floor One Bedroom Apartment
- Located on the Historic Barbican
- Walking Distance to the City Centre
- Open Plan Living
- Breakfast Bar
- High Ceilings
- Investment Potential
- Built in Wardrobes
- Integrated Kitchen Appliances





# Peacock Lane

Plymouth, PL4 0DQ

Introducing this exclusive 1 bedroom flat, a first-floor one-bedroom apartment nestled within the prestigious confines of the historic Barbican. Enjoy the convenience of a prime location within walking distance to the bustling city centre. Step into the open plan living area, featuring high ceilings that enhance the spacious atmosphere. The modern kitchen boasts integrated appliances and a stylish breakfast bar, ideal for casual dining or entertaining guests. The bedroom is adorned with built-in wardrobes, combining functionality and elegance seamlessly. This property not only offers a comfortable living space but also presents an excellent investment opportunity. With its contemporary design and desirable features, such as the integrated kitchen appliances, this apartment promises a lifestyle of sophistication and convenience. Experience the allure of city living at its finest in this exquisite Barbican residence.



## Tenure & Services

**Tenure:** Leasehold

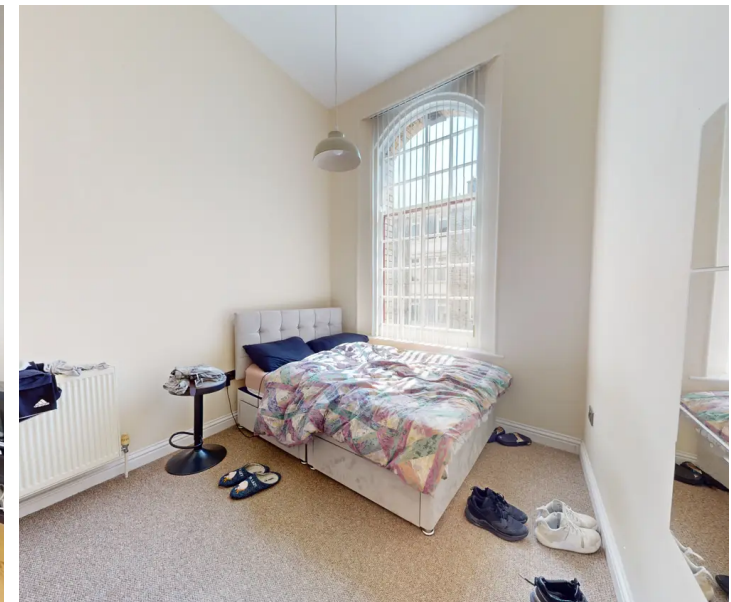
**Lease Length:** 108 years

**Service charge:** £1198.00 per annum

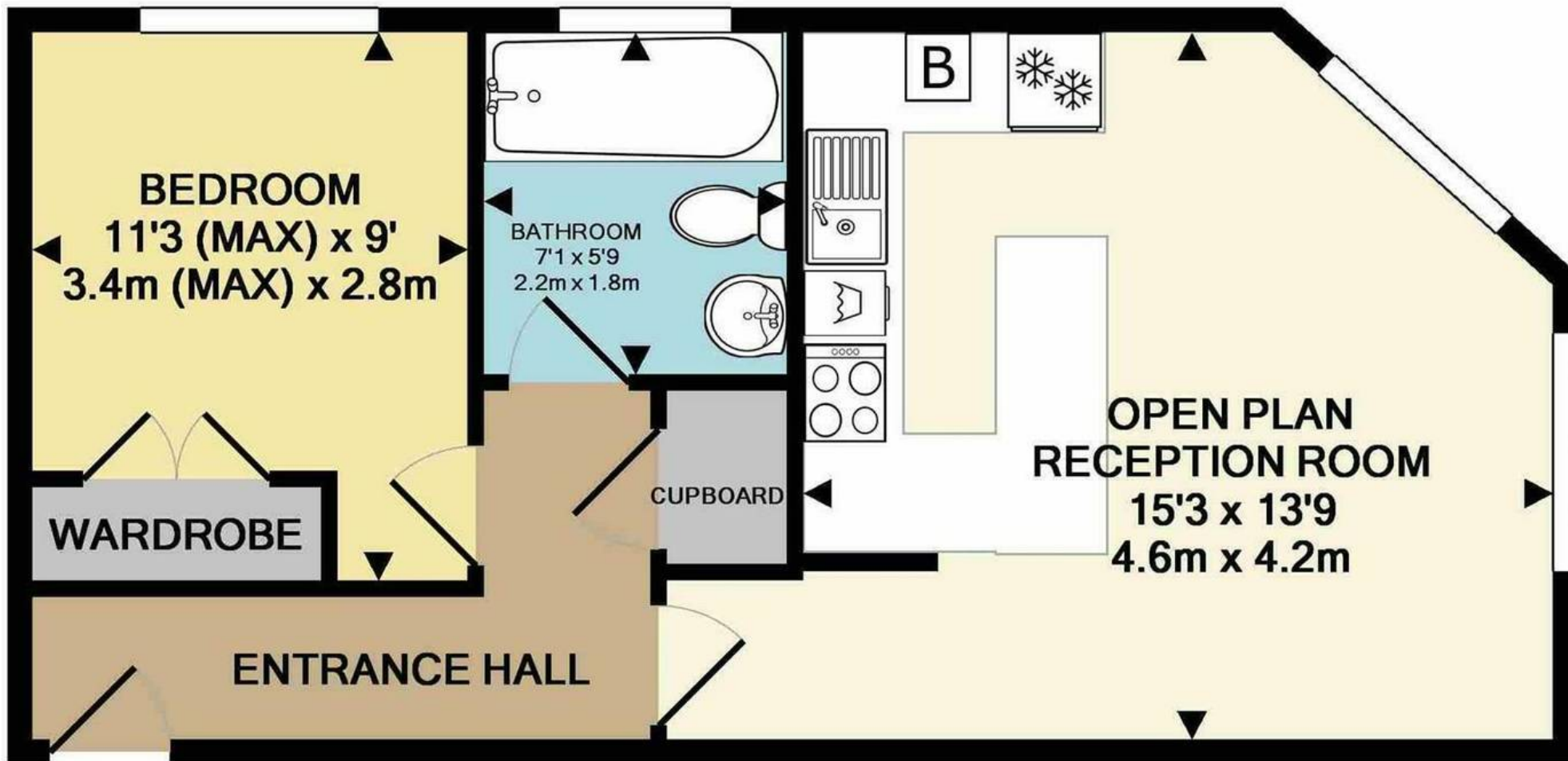
**Ground Rent:** £447.00 per annum

**Council Tax:** B

**EPC:** C







Measurements are approximate. Not to scale. Illustrative purposes only  
Made with Metropix ©2017





## Atwell Martin

Atwell Martin, 65 Southside Street – PL1 2LA

01752 202121

[plymouthsales@atwell-martin.co.uk](mailto:plymouthsales@atwell-martin.co.uk)

[plymouth.atwellmartin.co.uk/](http://plymouth.atwellmartin.co.uk/)

Atwell Martin Plymouth endeavour to ensure the accuracy of property details produced and displayed. Please note that we have not tested any apparatus, equipment, fixtures, fittings or services and so cannot verify that they are connected, in working order or fit for purpose. It is imperative that the buyer of any property makes such checks, prior to purchase so as to satisfy themselves of the properties suitability for their purchase. .