



8 Grand Parade, Plymouth, PL1 3DF

£270,000



8 Grand Parade, Plymouth

Luxurious 2-bed apartment with stunning sea views. Modern kitchen, en-suite master bedroom, secure parking. Ideal coastal living near Plymouth Sound and The Hoe. No onward chain. Perfect blend of elegance and convenience. Close to city centre.

Council Tax band: E

Tenure: Leasehold

Service Charge: £3523 per annum

Lease Expires: 2237

- Uninterrupted Sea Views
- Shower room
- Master En-suite
- No onward chain
- Fully Refurbished to an Excellent Standard
- Modern Kitchen with Integrated Appliances
- Secure Gated Parking
- Two Double Bedrooms





Description

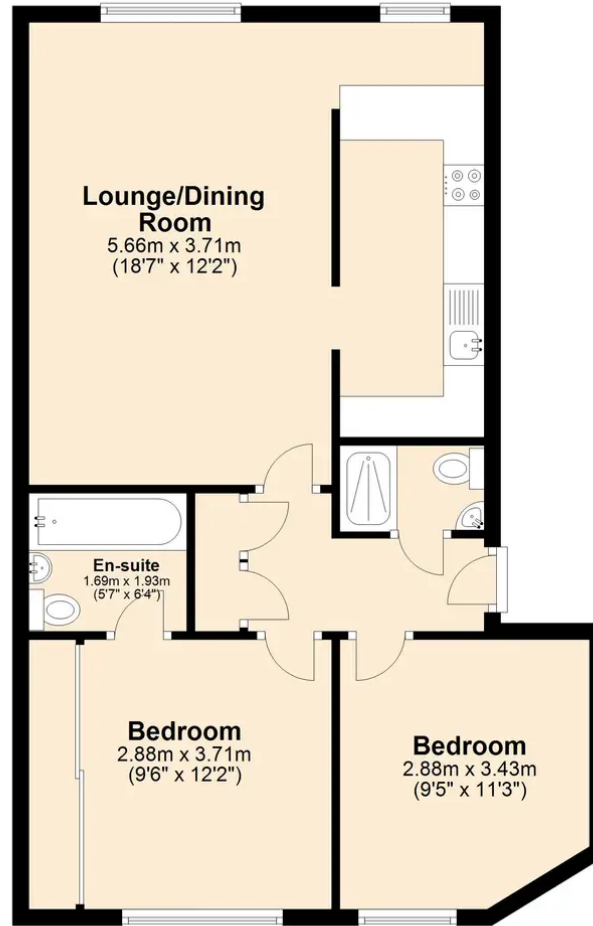
Nestled along the picturesque coastline, this exquisite 2-bedroom apartment offers a harmonious blend of luxury and tranquillity. Boasting uninterrupted sea views from its airy living spaces, this residence is a testament to coastal living at its finest. Recently refurbished to an exceptional standard, the apartment features a sleek modern kitchen complete with integrated appliances, perfect for culinary enthusiasts. The property further comprises a shower room and a master en-suite, providing both convenience and elegance. With secure gated parking, residents can enjoy peace of mind and convenience in equal measure. The absence of an onward chain ensures a seamless transition for discerning buyers seeking a turnkey solution. Each of the two double bedrooms exudes comfort and style, promising a restful sanctuary at the end of each day.

Beyond the confines of this stunning abode lies a world of outdoor splendour. Step outside and be greeted by what Plymouth sound and The Hoe has to offer. From superb dining experiences to Watersports and the added benefit of being just a short distance from the city centre. Grand Parade's Location really is not to be missed.



First Floor

Approx. 62.7 sq. metres (675.3 sq. feet)



Total area: approx. 62.7 sq. metres (675.3 sq. feet)

Atwell Martin

Atwell Martin, 65 Southside Street - PL1 2LA

01752 202121

plymouthsales@atwell-martin.co.uk

plymouth.atwellmartin.co.uk/

Atwell Martin Plymouth endeavour to ensure the accuracy of property details produced and displayed. Please note that we have not tested any apparatus, equipment, fixtures, fittings or services and so cannot verify that they are connected, in working order or fit for purpose. It is imperative that the buyer of any property makes such checks, prior to purchase so as to satisfy themselves of the properties suitability for their purchase. .