



Waterloo Street, Stoke, Plymouth, PL1 5RP

£375,000 FREEHOLD EPC: E



Waterloo Street

Stoke, Plymouth, PL1 5RP

We are delighted to present this exceptional 4 bedroom terraced house, boasting generous living space and a central location. Situated in a sought-after area, this period property offers a harmonious blend of character and modern comforts.

Council Tax band: B

Tenure: Freehold

- 4 Bedroom Period Property
- Generous Living Space
- Central Location
- Close to Brilliant Schools & Colleges
- Large Rear Garden
- Off Road Parking
- Sea Views from the Top Bedrooms
- Immaculately Presented Bathroom
- Utility Room



Waterloo Street

Stoke, Plymouth, PL1 5RP

We are delighted to present this exceptional 4 bedroom terraced house, boasting generous living space and a central location. Situated in a sought-after area, this period property offers a harmonious blend of character and modern comforts.

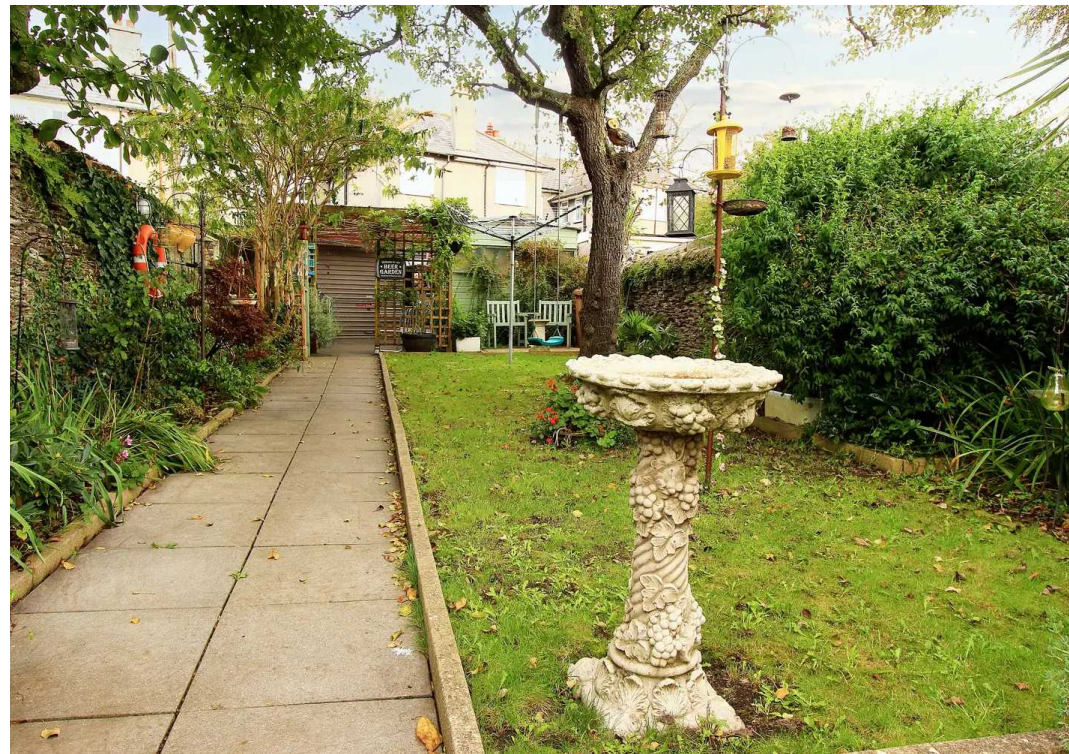
The property welcomes you with its elegant facade and upon entering, you will be struck by the spaciousness of the living areas. The ground floor features a bright and airy living room, perfect for entertaining, as well as a separate dining room providing ample space for family meals.

The first floor boasts two large double bedrooms, each exuding charm and character. With sea views from the top bedrooms, you can wake up to breathtaking views every morning. Additionally, the immaculately presented bathroom offers a touch of luxury to your daily routine.

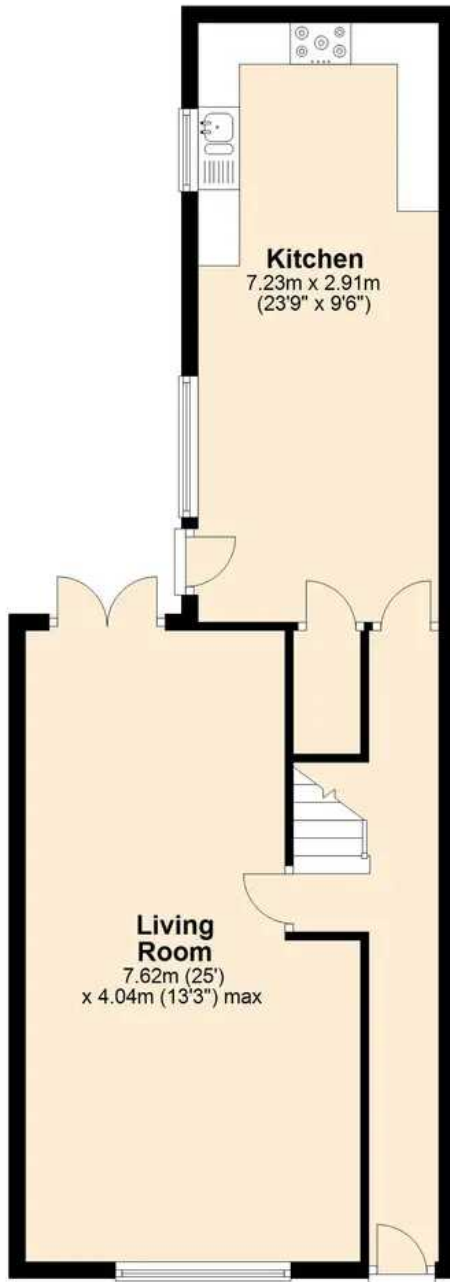
Furthermore, this property benefits from a large rear garden, offering a tranquil retreat where you can relax and enjoy the outdoors. Off-road parking provides added convenience.

Located in proximity to excellent schools and colleges, this property is highly desirable for families with educational aspirations. With its combination of character, central location, and sea views, this property is an opportunity not to be missed. Call today to arrange a viewing and secure your dream home.





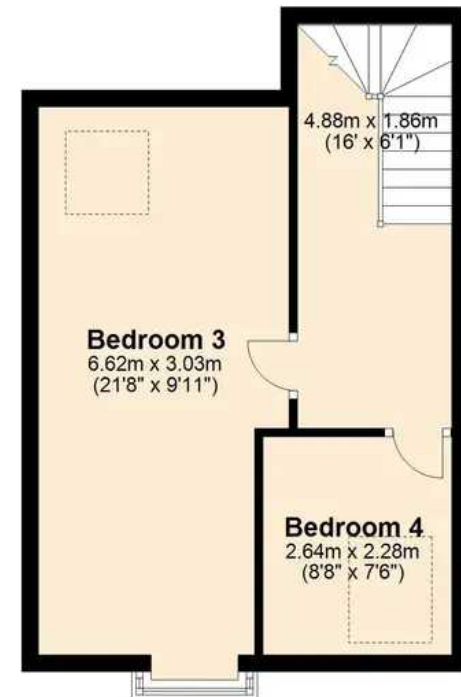
Ground Floor
Approx. 59.3 sq. metres (638.4 sq. feet)



First Floor
Approx. 59.7 sq. metres (642.2 sq. feet)



Second Floor
Approx. 35.0 sq. metres (377.1 sq. feet)



Total area: approx. 154.0 sq. metres (1657.7 sq. feet)



Atwell Martin

Atwell Martin, 65 Southside Street - PL1 2LA

01752 202121

plymouthsales@atwell-martin.co.uk

plymouth.atwellmartin.co.uk/

Atwell Martin Plymouth endeavour to ensure the accuracy of property details produced and displayed. Please note that we have not tested any apparatus, equipment, fixtures, fittings or services and so cannot verify that they are connected, in working order or fit for purpose. It is imperative that the buyer of any property makes such checks, prior to purchase so as to satisfy themselves of the properties suitability for their purchase. .