



Broughton Close, Hartley, Plymouth PL3 5QT

£525,000 EPC - D





Broughton Close

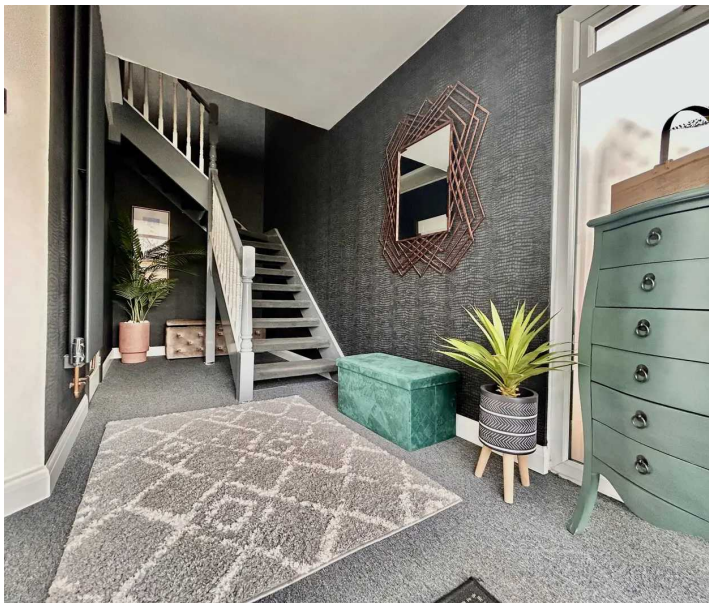
Hartley, Plymouth

Stunning 2 bed detached house in quiet cul-de-sac. Open plan living, fitted kitchen, large bedrooms & modern bathroom. Double garage, driveway, private south-facing garden with heated pool & garden bar. Fantastic opportunity for a stylish home with great outdoor amenities.

Council Tax band: D

Tenure: Freehold

- Heated Swimming Pool & Garden Bar
- Superbly Presented Detached Home
- Modern Three Piece Bathroom Suite
- Large Double Garage and Driveway
- Quiet Cul-de-sac Location
- Large Fitted Kitchen with Siemens Appliances
- 2 Large Double Bedrooms
- Extended Utility Room
- Immaculate Open Plan Living
- Private South Facing Garden



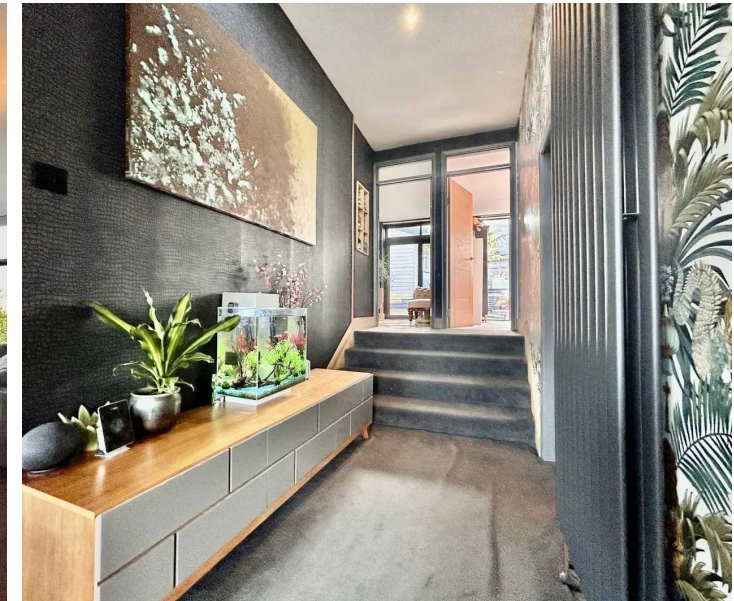
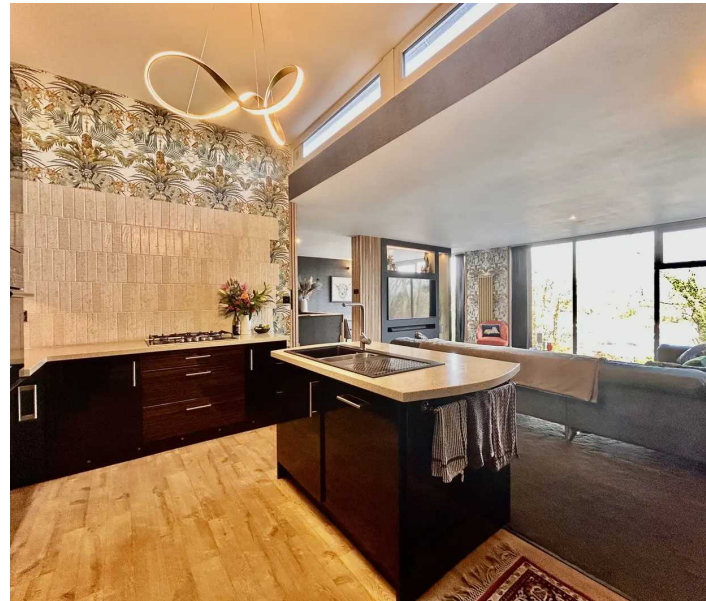
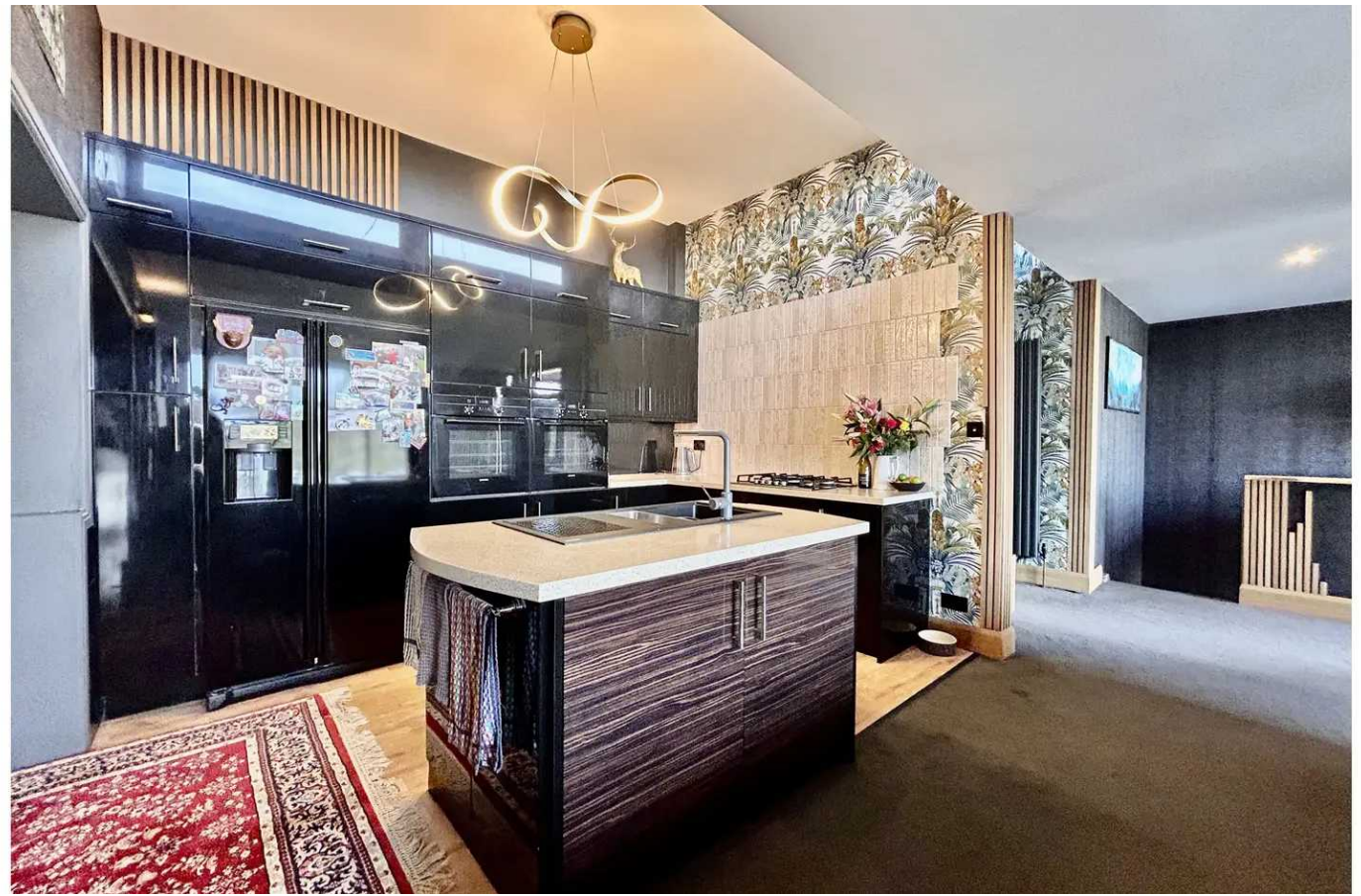
Broughton Close

Hartley, Plymouth

The property on offer is a stunning 2 bedroom detached house situated in a quiet cul-de-sac location. As you enter the property, you are welcomed into a superbly presented home featuring an immaculate open plan living space. The large fitted kitchen, complete with Siemens appliances, is perfect for those who love to cook and entertain. The extended utility room provides additional storage space, making it convenient for every-day living.

To the rear of the house you will find two large double bedrooms, both spacious and bright. The modern three-piece bathroom suite is tastefully designed, allowing for a relaxing and luxurious experience. The property also features a large double garage and driveway, offering ample parking space for multiple vehicles.

One of the highlights of this property is the private south-facing garden. The garden is beautifully landscaped and well-maintained, providing the perfect outdoor retreat. A heated swimming pool and garden bar are the perfect additions for those who love to entertain and enjoy the outdoors. Whether you are relaxing by the pool or hosting a barbecue in the garden, this space is ideal for creating lasting memories with family and friends.





In conclusion, this 2 bedroom detached house offers a fantastic opportunity to own a modern and stylish home. The property boasts a large fitted kitchen, spacious living areas, and two generous double bedrooms. The outside space is truly exceptional, with a private south-facing garden, heated swimming pool, and garden bar. This property is a must-see for those seeking a high-quality home with wonderful outdoor amenities. Don't miss out on the chance to make this house your dream home.

Council Tax band: D

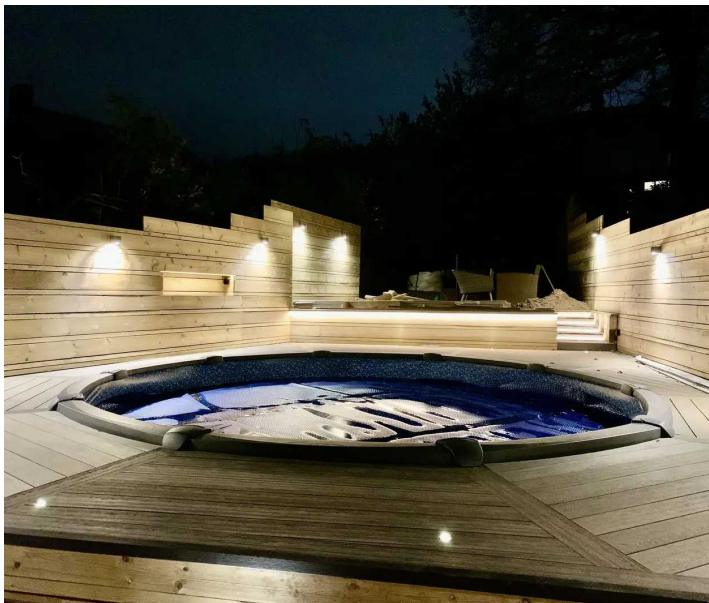
Tenure: Freehold

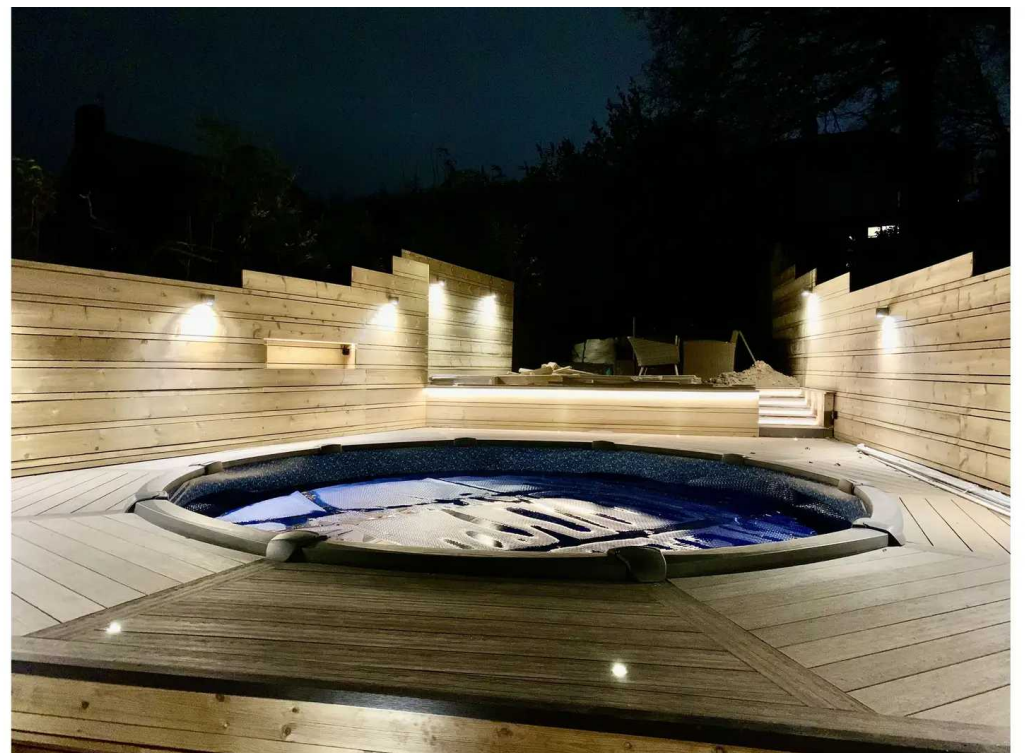
GARAGE

Double Garage

ON DRIVE

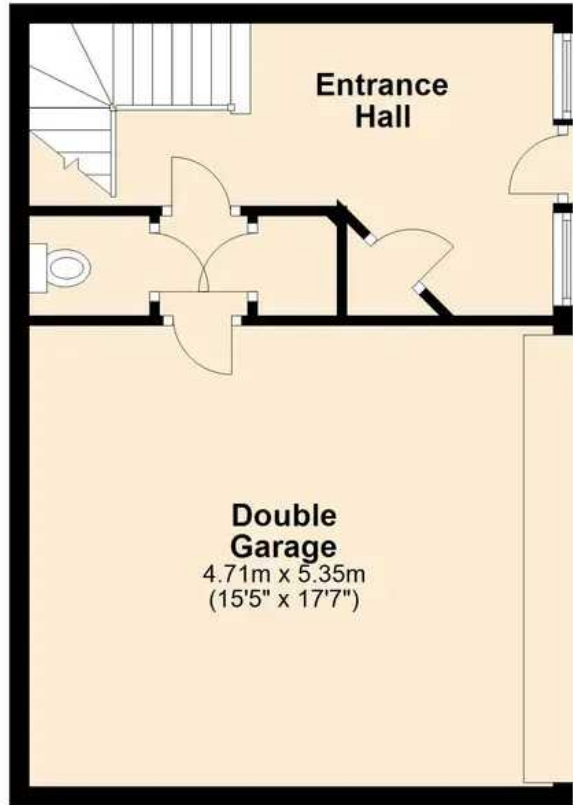
3 Parking Spaces





Ground Floor

Approx. 41.7 sq. metres (448.9 sq. feet)



First Floor

Approx. 116.5 sq. metres (1254.3 sq. feet)



Total area: approx. 158.2 sq. metres (1703.2 sq. feet)



Atwell Martin

Atwell Martin, 65 Southside Street - PL1 2LA

01752 202121

plymouthsales@atwell-martin.co.uk

plymouth.atwellmartin.co.uk/

Atwell Martin Plymouth endeavour to ensure the accuracy of property details produced and displayed. Please note that we have not tested any apparatus, equipment, fixtures, fittings or services and so cannot verify that they are connected, in working order or fit for purpose. It is imperative that the buyer of any property makes such checks, prior to purchase so as to satisfy themselves of the properties suitability for their purchase. .