



Durnford Street, Stonehouse, PLYMOUTH, PL1 3QW

£675,000 FREEHOLD EPC: E

**ATWELL
MARTIN**
ESTATE AGENTS



Durnford Street

Stonehouse, Plymouth

Introducing a magnificent five-bedroom mid-terraced residence, boasting an expansive rear garden and an array of luxurious features. Situated in a prime location close to the desirable Royal William Yard and picturesque Firestone Bay, this Georgian home offers a truly exceptional living experience.

Council Tax band: E

Tenure: Freehold

- Large Rear Garden
- Utility Room
- Grand Kitchen/Diner
- Located Close to the Royal William Yard and Firestone Bay
- Five Bedroom Georgian Terraced Home
- Four Double Bedrooms
- Two Bathrooms
- Stunning Fireplaces



Durnford Street

Stonehouse, Plymouth

Introducing a magnificent five-bedroom mid-terraced residence, boasting an expansive rear garden and an array of luxurious features. Situated in a prime location close to the desirable Royal William Yard and picturesque Firestone Bay, this Georgian home offers a truly exceptional living experience.

Spanning across multiple levels, this imposing property welcomes you with a grand entrance, leading to a spacious hallway which beautifully showcases the character and elegance of the era. The ground floor presents a generously sized kitchen/diner, designed to impress with its impressive dimensions and stylish decor. The abundance of natural light creates an inviting ambience, while the sleek design and modern appliances ensure a seamless culinary experience.

This residence offers a versatile layout, including a utility room, ideal for busy households seeking convenience and functionality. The property hosts four double bedrooms, each exuding their own unique charm and enchanting ambience. High ceilings and large windows punctuate the rooms with light, creating a comfortable and airy atmosphere that is second to none. Completing the property's superb accommodation, two spacious bathrooms provide ultimate relaxation and indulgence.



Durnford Street

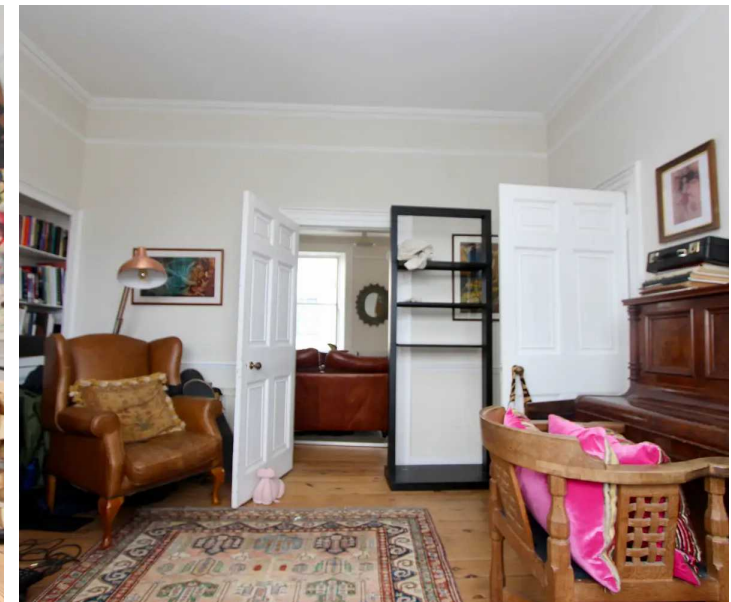
Stonehouse, Plymouth

Throughout, this home features magnificent original fireplaces, offering a glimpse into the rich history and grandeur of the property. From the intricate detailing to the incomparable craftsmanship, these stunning fireplaces serve as focal points that effortlessly enhance the overall aesthetic.

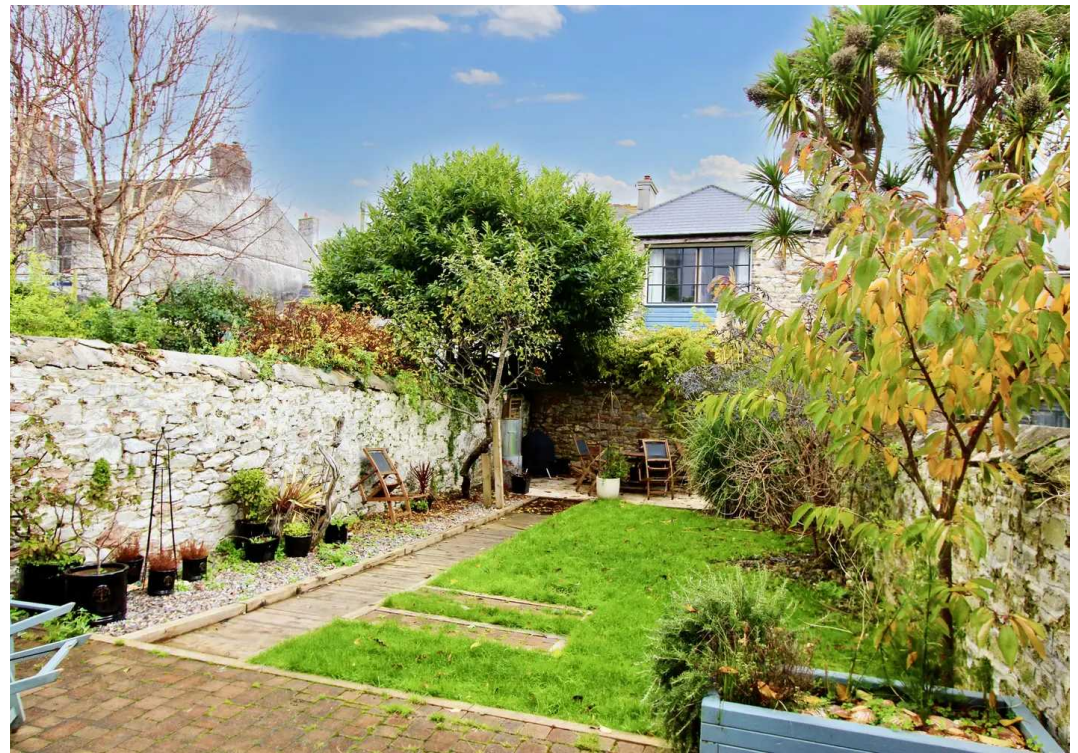
Set in an enviable location, this residence benefits from its proximity to the revered Royal William Yard and the captivating Firestone Bay. The neighbourhood is highly sought after, offering a vibrant assortment of shops, eateries, and leisure facilities, providing an eclectic mix of urban conveniences and coastal serenity on your doorstep.

This property exudes timeless elegance, both inside and out, with its grand proportions, opulent features, and delightful touches throughout. The remarkable rear garden provides a secluded haven, perfect for relaxation and hosting outdoor gatherings. Majestic and well-maintained, this space offers endless potential and is perfect for those with a green thumb or the desire for a private retreat.

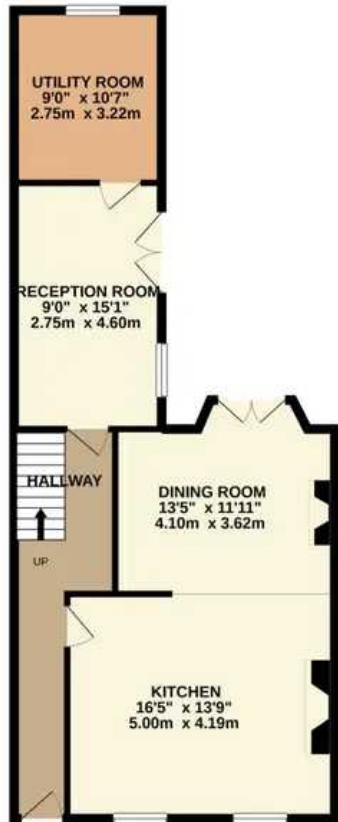
In conclusion, this five-bedroom Georgian terraced home is an absolute gem, combining classic style and contemporary comfort in an enviable location. Don't miss out on the opportunity to make this unparalleled residence your own.



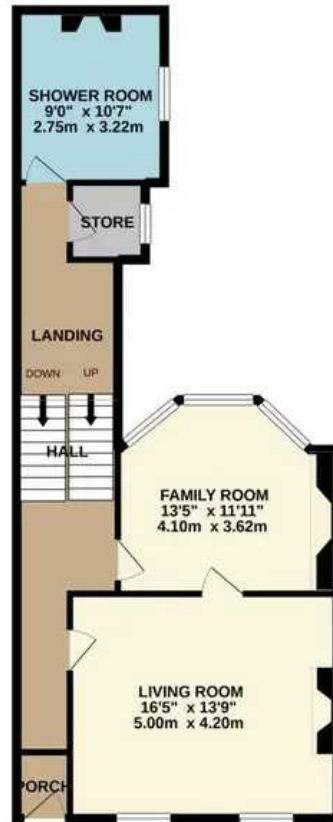




GROUND FLOOR
697 sq.ft. (64.8 sq.m.) approx.



1ST FLOOR
651 sq.ft. (60.5 sq.m.) approx.



2ND FLOOR
478 sq.ft. (44.4 sq.m.) approx.



3RD FLOOR
392 sq.ft. (36.4 sq.m.) approx.



TOTAL FLOOR AREA : 2218 sq.ft. (206.1 sq.m.) approx.

Whilst every attempt has been made to ensure the accuracy of the floorplan contained here, measurements of doors, windows, rooms and any other items are approximate and no responsibility is taken for any error, omission or mis-statement. This plan is for illustrative purposes only and should be used as such by any prospective purchaser. The services, systems and appliances shown have not been tested and no guarantee as to their operability or efficiency can be given.

Made with Metropix ©2020



Atwell Martin

Atwell Martin, 65 Southside Street – PL1 2LA

01752 202121

plymouthsales@atwell-martin.co.uk

plymouth.atwellmartin.co.uk/

Atwell Martin Plymouth endeavour to ensure the accuracy of property details produced and displayed. Please note that we have not tested any apparatus, equipment, fixtures, fittings or services and so cannot verify that they are connected, in working order or fit for purpose. It is imperative that the buyer of any property makes such checks, prior to purchase so as to satisfy themselves of the properties suitability for their purchase. .