



Fore Street, Plympton St. Maurice, PL7 1LZ

£350,000 FREEHOLD EPC: D



## Fore Street

Plympton St. Maurice, PL7 1LZ

Introducing this beautifully presented 4-bedroom end of terrace cottage tucked away behind the historic Fore street, Plympton. Offering a delightful blend of rustic charm and modern comforts, this property boasts stunning countryside views and is situated in a sought-after location.

Council Tax band: C

Tenure: Freehold

- Beautifully Presented End Terrace Cottage
- South Facing Garden
- Main Bathroom & En-suite
- Gas Central Heating & Woodburner
- Tucked behind a Historic Road
- Three Double Bedrooms
- Stunning Countryside Views
- Close to Great Schools & Amenities
- Office Space & External Utility area



# Fore Street

Plympton St. Maurice, PL7 1LZ

Introducing this beautifully presented 4-bedroom end of terrace cottage tucked away behind the historic Fore street, Plympton St Maurice. Offering a delightful blend of rustic charm and modern comforts, this property boasts stunning countryside views and is situated in a sought-after location.

Upon entering, a warm and inviting ambience greets you, leading you through to the spacious living areas. The main reception room is ideal for entertaining, with its woodburner creating a cosy atmosphere during the colder months. The fully equipped kitchen provides ample storage and workspace, while the adjacent dining area offers a perfect setting to enjoy family meals.

Upstairs, three generous doubles and a single bedroom await, each offering ample natural light and showcasing the breathtaking scenic beauty of the surrounding countryside. The fourth bedroom benefits from an en-suite bathroom, adding a touch of luxury to your daily routine. A separate main bathroom serves the remaining bedrooms.

Additional features include gas central heating, ensuring year-round comfort, an office space perfect for those who work from home, and an external utility area for added convenience.





This property is ideally located, with easy access to excellent schools and a range of local amenities. A south-facing garden completes this picture-perfect package, providing a private outdoor space to enjoy the sunshine and relax in serene surroundings.

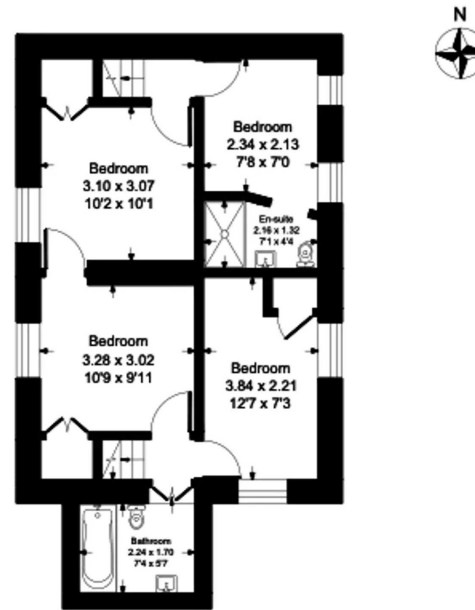
Offering a tranquil and idyllic lifestyle, this stunning end of terrace cottage is a must-see for those seeking a mix of modern comfort and picturesque surroundings.



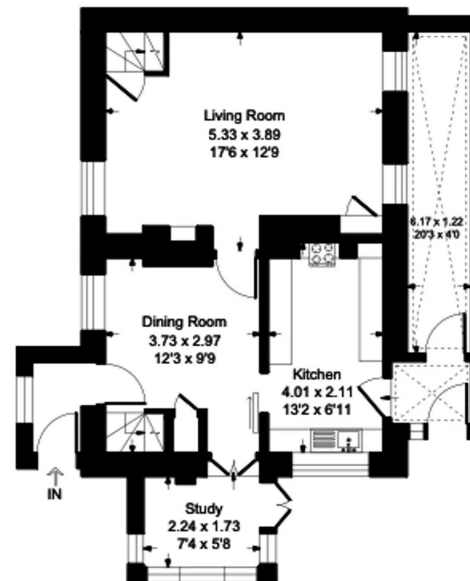


23 Fore Street, Plympton St Maurice, PL7 1LZ

Approximate Gross Internal Floor Area = 111.1 sq m / 1196 sq ft

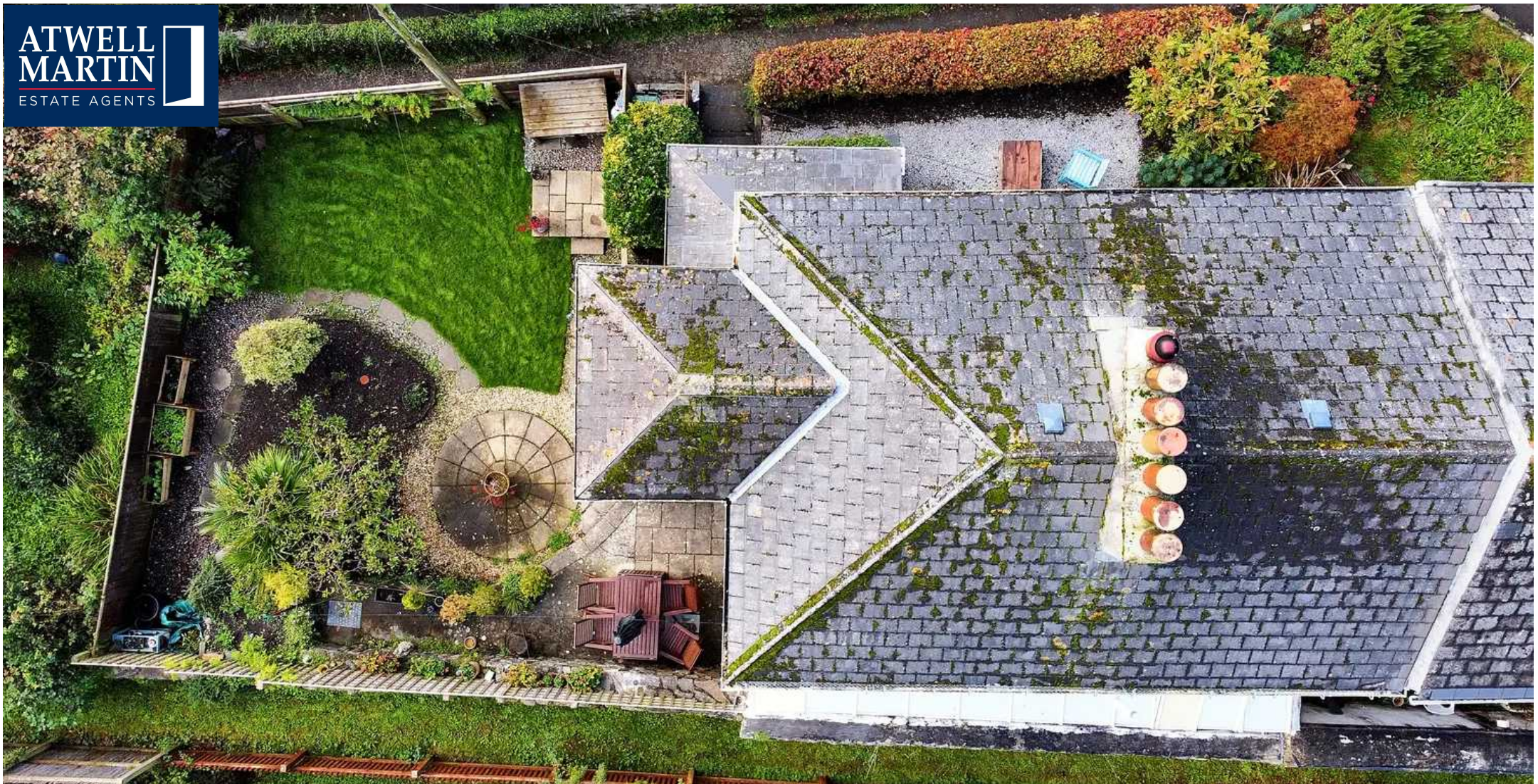


First Floor



Ground Floor

Illustration for identification purposes only, measurements are approximate, not to scale.



## Atwell Martin

Atwell Martin, 65 Southside Street - PL1 2LA

01752 202121

[plymouthsales@atwell-martin.co.uk](mailto:plymouthsales@atwell-martin.co.uk)

[plymouth.atwellmartin.co.uk/](http://plymouth.atwellmartin.co.uk/)

Atwell Martin Plymouth endeavour to ensure the accuracy of property details produced and displayed. Please note that we have not tested any apparatus, equipment, fixtures, fittings or services and so cannot verify that they are connected, in working order or fit for purpose. It is imperative that the buyer of any property makes such checks, prior to purchase so as to satisfy themselves of the properties suitability for their purchase. .