



**Hardingstone Renney Road, Down Thomas**  
£1,250,000 FREEHOLD EPC: C



## Hardingstone Renney Road

Down Thomas, Plymouth

A large four bedroom family home offering simply superb views across Plymouth Sound. Externally the property offers large gardens and sun drenched patios from which to take in those views. The property offers a living room, sun room, dining room, kitchen, integral garage, family bathroom and sep. WC

Council Tax band: G

Tenure: Freehold

- Spectacular Views over Plymouth Sound
- Large Gardens
- Four Bedrooms
- Living Room
- Dining Room
- Sun Room
- Kitchen
- Family Bathroom
- Separate WC
- Sun Drenched Patio



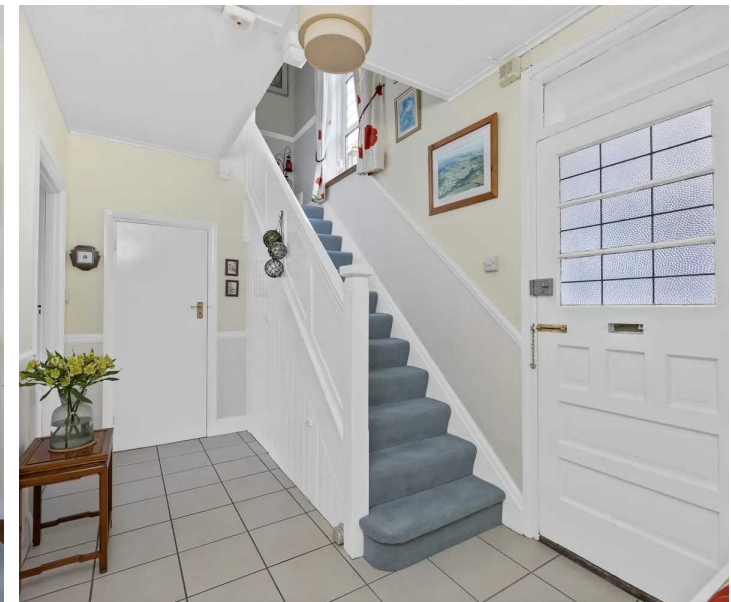
# Hardingstone Renney Road

Down Thomas, Plymouth

Hardingstone is a sizeable home with large gently sloping gardens which occupies a truly spectacular position which, in turn, offers breath taking views over Plymouth Sound. From Crab Rock, across Heybrook Bay, over the Plymouth Breakwater toward the Rame Peninsula, the views extending, on a clear day, as far as The Lizard.

The property offers a living room, a sunroom, kitchen with open plan access to the large dining room, four bedrooms, the master with ensuite, a family bathroom, separate wc and integral garage.

Externally, the mature and sizeable gardens are well stocked with a range of flowers, plants and fauna. Large lawns and sun drenched patios offer wonderful opportunities to take in the extraordinary views on offer from this wonderful home.



# Hardingstone Renney Road

Down Thomas, Plymouth

Nestled in the heart of the picturesque county of Devon, lies the enchanting village of Down Thomas, where you'll find the captivating Renney Road. As you meander along this quaint street, you'll be transported to a world drenched in charm and history, enticing you to explore every nook and cranny.

The first thing that captures the imagination is the stunning natural surroundings that envelop Renney Road. Lush green meadows stretch as far as the eye can see, dotted with colourful wildflowers holding the village in a gentle embrace. Rolling hills and ancient woodlands provide a breath-taking backdrop, inviting you to take leisurely walks and discover hidden gems in the vast Devon countryside.

Renney Road itself exudes an aura of enchantment with its delightful mix of traditional architecture and timeless charm. Handsome stone cottages line the street, their weathered facades telling tales of bygone eras. Take a moment to admire the intricately carved wooden doors, adorned with vibrant blooms in window boxes, offering a warm welcome to all who venture here.

The village community woven within Renney Road is as inviting as the village itself. Friendly faces greet you at the local pub, where the air is buzzing with lively conversation and the tantalizing aroma of hearty Devonshire dishes. Step into the nearby village shop, a true cornerstone of the community, where locals gather to share stories and pick up daily essentials.



# Hardingstone Renney Road

Down Thomas, Plymouth

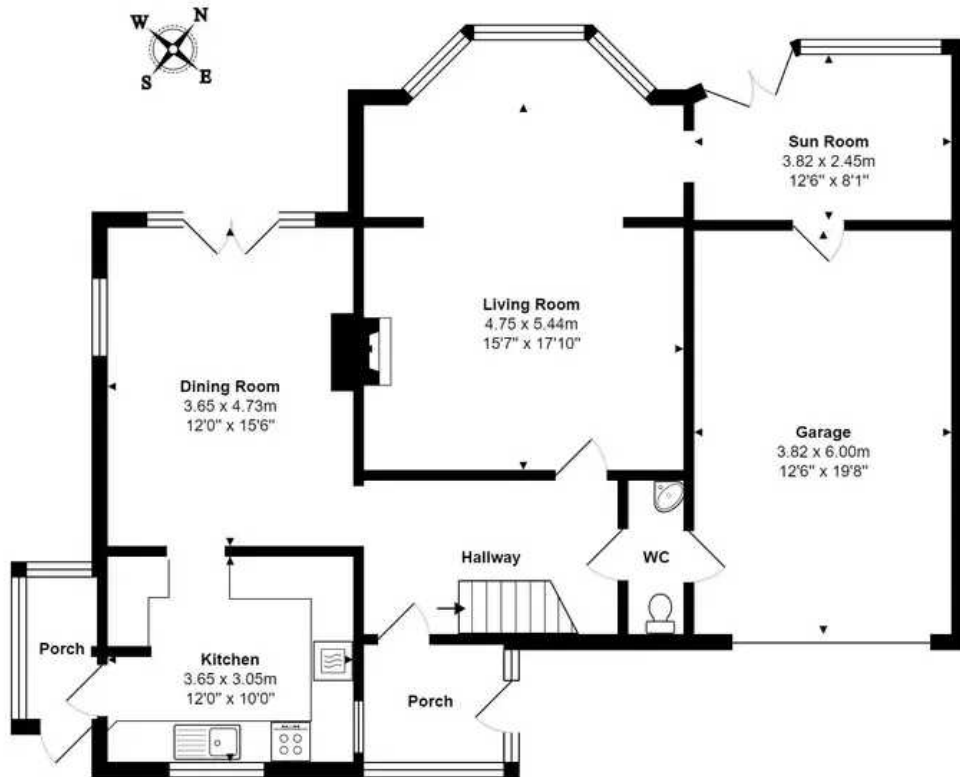
For those seeking outdoor adventures, Renney Road provides an ideal gateway to the wonders of the sea. Just a short stroll away, you'll discover the breath-taking coastline with its rugged cliffs, dramatic views, and pristine beaches. Feel the invigorating sea breeze on your face as you embark on a coastal walk, immersing yourself in the raw beauty of nature.

A sense of tranquillity pervades Renney Road, offering respite from the hectic pace of modern life. The tranquillity is further enhanced by the absence of bustling shops and commercial establishments, allowing residents to savour the peacefulness that defines this idyllic village. Yet, within a short drive, the vibrant city of Plymouth awaits, offering a myriad of cultural experiences, shopping opportunities, and entertainment options.

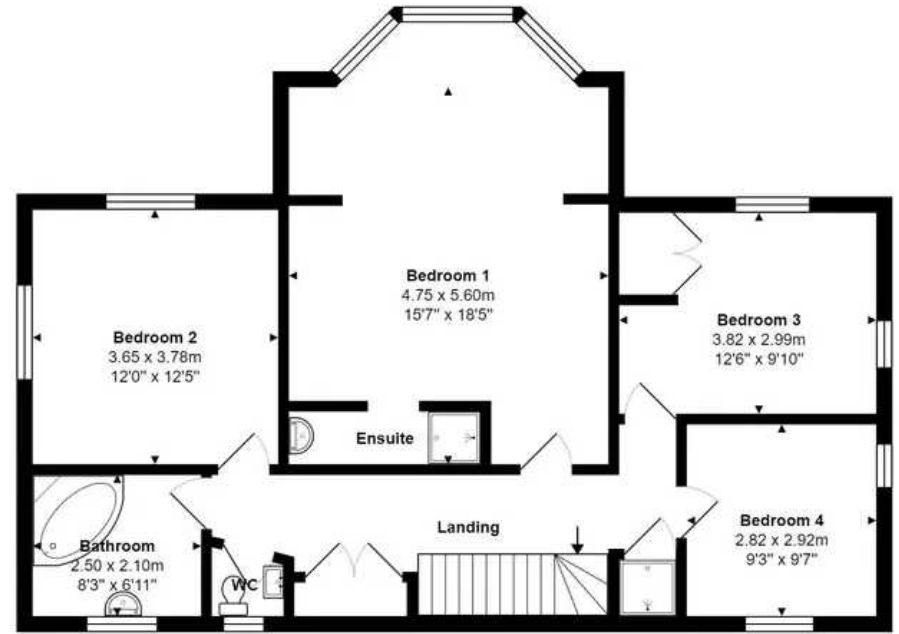
Renney Road presents an opportunity to embrace a slower, more meaningful way of living. With a close-knit community, a stunning natural backdrop, and the allure of coastal exploration, this hidden gem in Devon beckons you to embark on a new chapter of your life. So, are you ready to uncover the charm and beauty that Renney Road and its surrounding embrace?







Ground Floor



First Floor

Total Approximate Area - 196.9 m<sup>2</sup> ... 2119 ft<sup>2</sup>

Whilst every attempt has been made to ensure the accuracy of the floor plan contained here, measurements of doors, windows, rooms and any other items are approximate and no responsibility is taken for any error, omission or mis-statement. This plan is for illustrative purposes only and should be used as such by any prospective purchaser or tenant. The services, systems and appliances shown have not been tested and no guarantee as to their operability or efficiency can be given.

©241Photography for Atwell Martin



## Atwell Martin

Atwell Martin, 65 Southside Street – PL1 2LA

01752 202121

[plymouthsales@atwell-martin.co.uk](mailto:plymouthsales@atwell-martin.co.uk)

[plymouth.atwellmartin.co.uk/](http://plymouth.atwellmartin.co.uk/)

Atwell Martin Plymouth endeavour to ensure the accuracy of property details produced and displayed. Please note that we have not tested any apparatus, equipment, fixtures, fittings or services and so cannot verify that they are connected, in working order or fit for purpose. It is imperative that the buyer of any property makes such checks, prior to purchase so as to satisfy themselves of the properties suitability for their purchase. .