



ROEHAMPTON GATE

London SW15



SEVEN BEDROOM DETACHED PROPERTY

A magnificent and beautifully designed seven bedroom detached house finished to an exceptional specification providing an indoor swimming pool and a wonderful garden.



Local Authority: London Borough of Richmond Upon Thames

Council Tax band: H

Tenure: Freehold

Guide Price: £10,500,000



FOUR FLOORS EXTENDING TO APPROXIMATELY 10,000 SQ FT

The accommodation is arranged over four floors extending to approximately 10,000 sq ft with gated carriage driveway and a south west facing landscaped garden.

The entrance approach gives a strong first impression, whilst allowing for parking for several cars. On entry, the hallway gives a great feeling of space, whilst featuring the staircase as it cuts dramatically through the house. A large skylight allows light to flood the hall and landings.







BESPOKE KITCHEN & FAMILY ROOM

The reception areas flow from the hall: to the left is a large study/reception room; to the right is a formal drawing room which gives way, via large double doors, to another grand reception room to the rear. This allows views of and access to the terrace and garden beyond. This space also connects with the bespoke, well planned kitchen/breakfast/family room by Richard Baker with associated fitted furniture. Again, there is access to the terrace and garden which features a hot tub. There is also a walk-in pantry on this floor, a side entrance, an integral garage and a cloakroom.



SUPERB PRINCIPAL BEDROOM WITH BALCONY

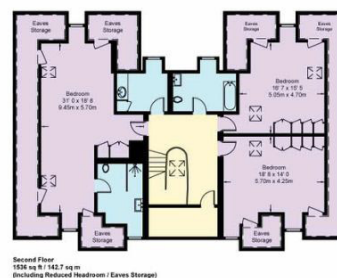
The lower ground floor has great ceiling heights and is given over to leisure with a 8m swimming pool, leisure and gym areas, plant rooms, a wine cellar, utility room and separate cloakroom. There is also a one bedroom suite on this level with its own access ideal for staff or long term guests.

Upstairs, the superb principal bedroom suite spans the whole left side of the house, with a west facing balcony overlooking the garden, two well-appointed dressing rooms and a stunning en suite bathroom, complete with separate shower and freestanding bath. three further en suite bedrooms round off the accommodation at first floor level and on the top floor there are three large double bedrooms which are very well balanced by two bathrooms, one of which is en suite.









Including reduced headroom/ Eaves Storage
Approximate Gross Internal Area = 941.4 sq m / 10134 sq ft

This plan is for layout guidance only. Not drawn to scale unless stated. Windows and door openings are approximate. Whilst every care is taken in the preparation of this plan, please check all dimensions, shapes and compass bearings before making any decisions reliant upon them. (ID767266)

We would be delighted
to tell you more.

Edward Adler
+44 20 8939 2802
edward.adler@knightfrank.com

Knight Frank Richmond
23 Hill Street
London TW9 1SX

knightfrank.co.uk

Your partners in property

1. Particulars: These particulars are not an offer or contract, nor part of one. You should not rely on statements given by Knight Frank in the particulars, by word of mouth or in writing ("information") as being factually accurate about the property, its condition or its value. Neither Knight Frank nor any joint agent has any authority to make any representations about the property, and accordingly any information given is entirely without responsibility on the part of Knight Frank. 2. Material Information: Please note that the material information is provided to Knight Frank by third parties and is provided here as a guide only. While Knight Frank has taken steps to verify this information, we advise you to confirm the details of any such material information prior to any offer being submitted. If we are informed of changes to this information by the seller or another third party, we will use reasonable endeavours to update this as soon as practical. 3. Photos, Videos etc: The photographs, property videos and virtual viewings etc. show only certain parts of the property as they appeared at the time they were taken. Areas, measurements and distances given are approximate only. 4. Regulations etc: Any reference to alterations to, or use of, any part of the property does not mean that any necessary planning, building regulations or other consent has been obtained. A buyer must find out by inspection or in other ways that these matters have been properly dealt with and that all information is correct. 5. Fixtures and fittings: A list of the fitted carpets, curtains, light fittings and other items fixed to the property which are included in the sale (or may be available by separate negotiation) will be provided by the Seller's Solicitors. 6. VAT: The VAT position relating to the property may change without notice. 7. To find out how we process Personal Data, please refer to our Group Privacy Statement and other notices at <https://www.knightfrank.com/legals/privacy-statement>.

Particulars dated June 2024. Photographs and videos dated June 2024. All information is correct at the time of going to print. Knight Frank is the trading name of Knight Frank LLP. Knight Frank LLP is a limited liability partnership registered in England and Wales with registered number OC305934. Our registered office is at 55 Baker Street, London W1U 8AN. We use the term 'partner' to refer to a member of Knight Frank LLP, or an employee or consultant. A list of members names of Knight Frank LLP may be inspected at our registered office. If you do not want us to contact you further about our services then please contact us by either calling 020 3544 0692, email to marketing.help@knightfrank.com or post to our UK Residential Marketing Manager at our registered office (above) providing your name and address.