



Church Street, Old Isleworth, Middlesex TW7

Church Street, Old Isleworth TW7

An exquisite red brick period house with stunning river views and incredible volume with large mature garden. Situated on this historic street adjacent to the River Thames and within yards of Syon Park. Offering 2,720 sq ft of living space, the property is arranged over three floors and has a wealth of historic beauty with many original features. It is hard to find a London House with such glorious river views that this one commands, especially from the first floor reception room.



Guide price: £2,000,000

Tenure: Available freehold

Local authority: London Borough of Hounslow

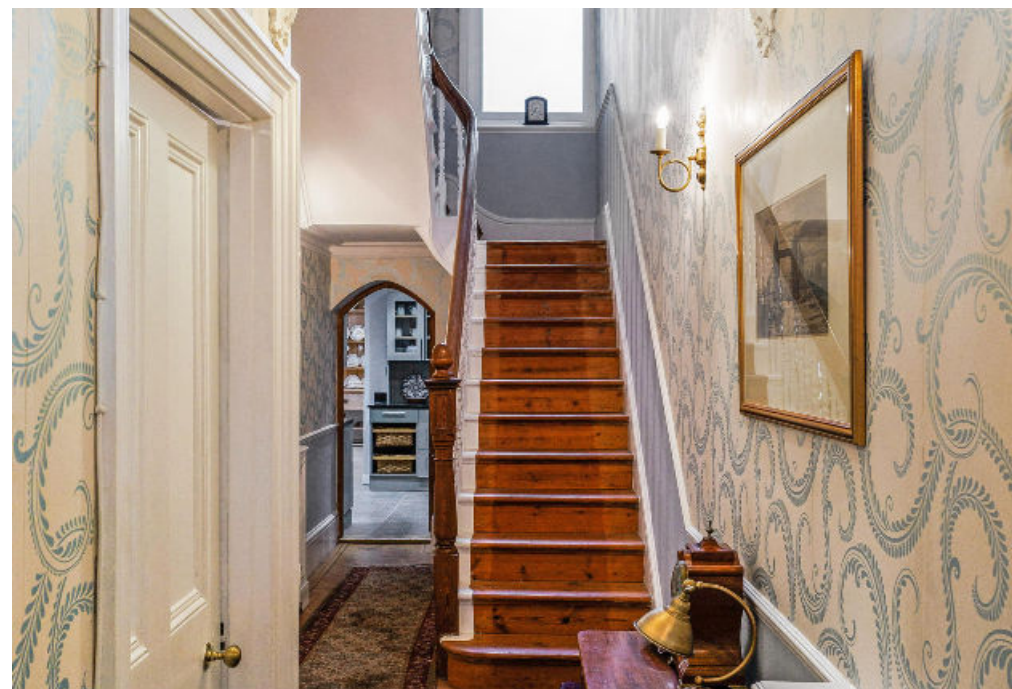
Council tax band: H





On the ground floor there is a large reception room with 3.3 meter ceiling height and period fireplace. The current owners have extended the rear of the house to create a stunning kitchen with ample space for a large dining table and bi-fold doors onto the rear garden. This space also hosts a W.C and utility room.







Local transport links include numerous bus routes to surrounding areas. Frequent trains travel to Central London via South West Trains from Isleworth Station (located one mile from the property), St Margaret's and Richmond stations, as well as the London Underground District Line from Richmond Station. The property is well placed for access to the A316/M3, M4 and M25 motorways, and Heathrow Airport is five miles away.



Church Street TW7

Approximate Gross Internal Floor Area

243.9 sq m / 2,625 sq ft

Outbuilding = 8.8 sq m / 95 sq ft

Total = 2,720 sq ft / 252.7 sq m

This plan is for guidance only and must not be relied upon as a statement of fact. Attention is drawn to the important notice on the last page of the text of the Particulars.



Knight Frank

Richmond

23 Hill Street

London

TW9 1SX

[knightfrank.co.uk](https://www.knightfrank.co.uk)

I would be delighted to tell you more

Liam Doyle

020 8939 2809

liam.doyle@knightfrank.com



Fixtures and fittings: A list of the fitted carpets, curtains, light fittings and other items fixed to the property which are included in the sale (or may be available by separate negotiation) will be provided by the Seller's Solicitors.

Important Notice: 1. Particulars: These particulars are not an offer or contract, nor part of one. You should not rely on statements by Knight Frank LLP in the particulars or by word of mouth or in writing ("information") as being factually accurate about the property, its condition or its value. Neither Knight Frank LLP nor any joint agent has any authority to make any representations about the property, and accordingly any information given is entirely without responsibility on the part of the agents, seller(s) or lessor(s). 2. Photos, Videos etc: The photographs, property videos and virtual viewings etc. show only certain parts of the property as they appeared at the time they were taken. Areas, measurements and distances given are approximate only. 3. Regulations etc: Any reference to alterations to, or use of, any part of the property does not mean that any necessary planning, building regulations or other consent has been obtained. A buyer or lessee must find out by inspection or in other ways that these matters have been properly dealt with and that all information is correct. 4. VAT: The VAT position relating to the property may change without notice. 5. To find out how we process Personal Data, please refer to our Group Privacy Statement and other notices at <https://www.knightfrank.com/legals/privacy-statement>.

Particulars dated January 2025. Photographs and videos dated January 2025.

Knight Frank is the trading name of Knight Frank LLP. Knight Frank LLP is a limited liability partnership registered in England and Wales with registered number OC305934. Our registered office is at 55 Baker Street, London W1U 8AN where you may look at a list of members' names. If we use the term 'partner' when referring to one of our representatives, that person will either be a member, employee, worker or consultant of Knight Frank LLP and not a partner in a partnership. If you do not want us to contact you further about our services then please contact us by either calling 020 3544 0692, email to marketing.help@knightfrank.com or post to our UK Residential Marketing Manager at our registered office (above) providing your name and address.