



Church Road, Teddington TW11



Church Road, Teddington TW11

A selection of spacious one and two bedroom apartments and mews style residences located within this newly converted development in the heart of Teddington, close to the High Street and station.

With contemporary neutral interiors, apartments have been finished to a high specification featuring stylish kitchens and shower rooms, wood flooring and classic style column radiators. The property is a first floor one bedroom apartment. With a Share of Freehold.



Guide price: £400,000

Tenure: Share of freehold plus leasehold, approximately 999 years remaining

Local authority: London Borough of Richmond Upon Thames

Council tax band: Unknown





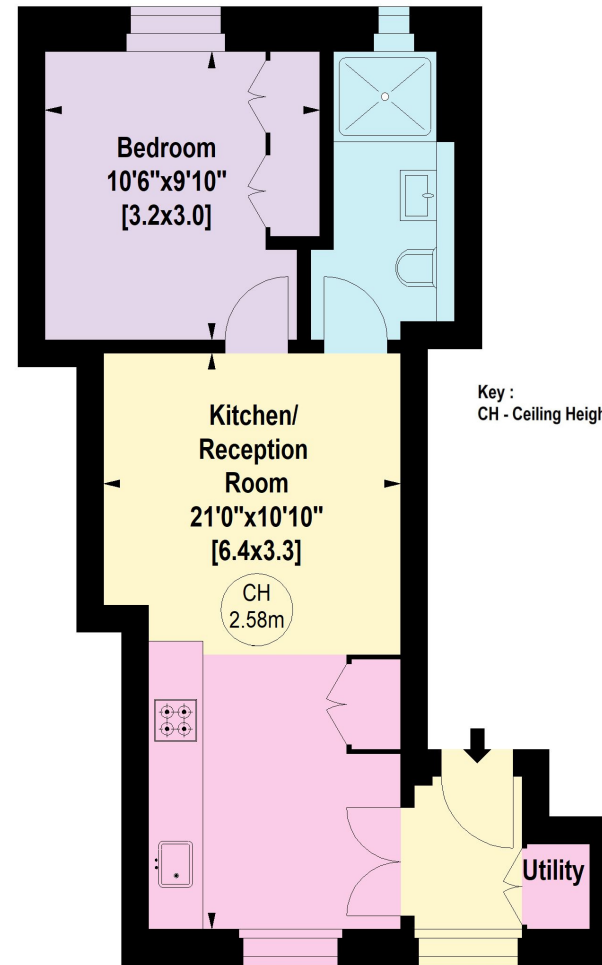
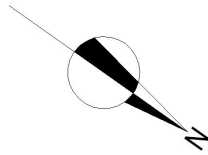
Close by there are many boutique shops, restaurants, and the amenities of Teddington and Twickenham, including the David Lloyd Leisure Centre and The prestigious Lensbury Club. Locally there are excellent transport links.



Church Road, TW11

Approximate Gross Internal Floor Area
37.25 sq m / 401 sq ft

This plan is for guidance only and must not be relied upon as a statement of fact. Attention is drawn to the important notice on the last page of the text of the Particulars.



FIRST FLOOR

Knight Frank
Richmond
23 Hill Street
London TW9 1SX

We would be delighted to tell you more

Liam Doyle
020 8939 2809
liam.doyle@knightfrank.com

[knightfrank.co.uk](https://www.knightfrank.co.uk)

