



The Vineyard, Richmond **TW10**



The Vineyard, Richmond **TW10**

This three bedroom maisonette forms part of a beautiful period building on a sought-after residential road on Richmond Hill.

Arranged over the top two floors and spanning 1,399 sq ft, the beautifully presented accommodation briefly comprises an entrance hall, family bathroom, a stunning open plan kitchen/reception room complete with a breakfast bar, bespoke cabinetry and Crittall doors.

Upstairs there is a stunning principal bedroom complete with a roll top bath and two further bedrooms with built-in wardrobes.

The property further benefits from access to a private front garden.



Guide price: £1,350,000

Tenure: Share of freehold plus leasehold, approximately 140 years remaining

Local authority: London Borough of Richmond Upon Thames

Council tax band: F

Location

The Vineyard is a very sought-after location on the lower slopes of Richmond Hill within reach of the vibrant and excellent facilities of Richmond town, including bars, restaurants and shops. The 2,500 acres of Richmond Park are also within reach as is the river and its towpath.

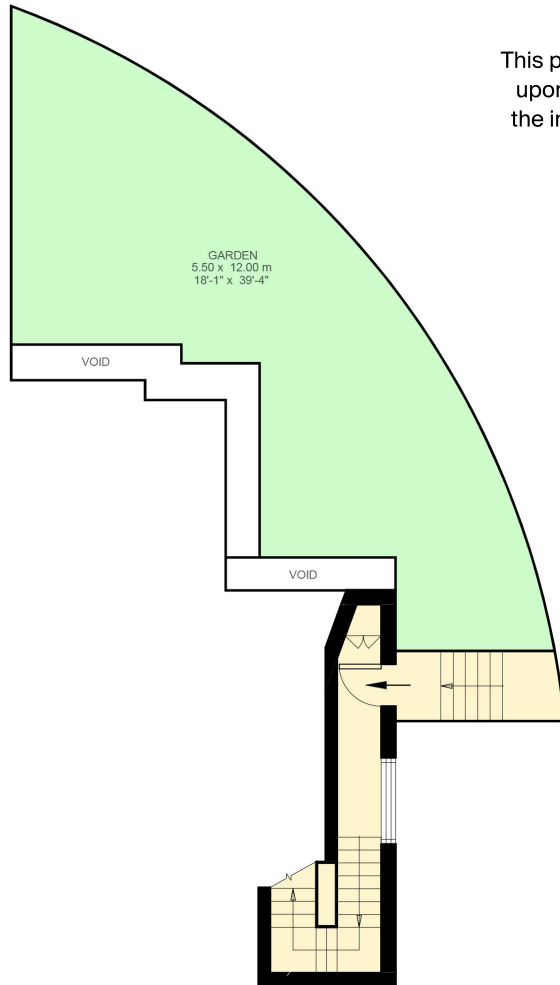
The Richmond Borough is renowned for the first class schooling opportunities locally and many of these are also within walking distance. Schools include The Vineyard School, King's House School, Marshgate Primary School and Rainbow Nursery School.

Richmond Station provides a quick link into central London via both Underground (District Line) and overground (Waterloo 19 minutes) and Heathrow is approximately 7.6 miles away.

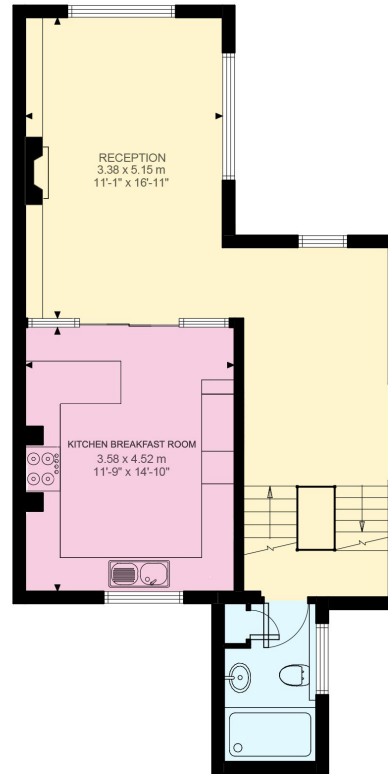
*All times and distance are approximate.



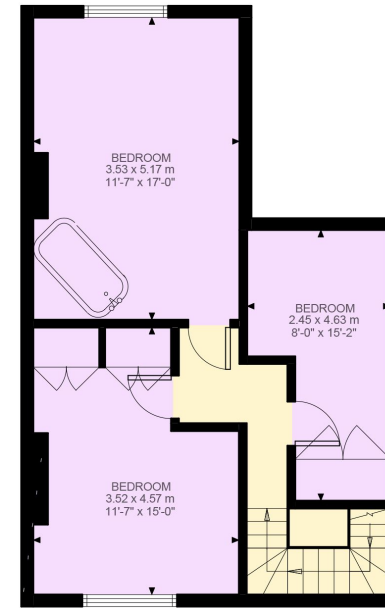
This plan is for guidance only and must not be relied upon as a statement of fact. Attention is drawn to the important notice on the last page of the text of the Particulars.



Ground Floor



First Floor



Second Floor

The Vineyard, TW10

Approximate Gross Internal Area

112.10 SQ.M / 1207 SQ.FT

Knight Frank
Richmond
23 Hill Street,
London
TW9 1SX
knightfrank.co.uk

We would be delighted to tell you more

Liam Doyle
020 8939 2809
liam.doyle@knightfrank.com



Fixtures and fittings: A list of the fitted carpets, curtains, light fittings and other items fixed to the property which are included in the sale (or may be available by separate negotiation) will be provided by the Seller's Solicitors.

Important Notice: 1. Particulars: These particulars are not an offer or contract, nor part of one. You should not rely on statements by Knight Frank LLP in the particulars or by word of mouth or in writing ("information") as being factually accurate about the property, its condition or its value. Neither Knight Frank LLP nor any joint agent has any authority to make any representations about the property, and accordingly any information given is entirely without responsibility on the part of the agents, seller(s) or lessor(s). 2. Photos, Videos etc: The photographs, property videos and virtual viewings etc. show only certain parts of the property as they appeared at the time they were taken. Areas, measurements and distances given are approximate only. 3. Regulations etc: Any reference to alterations to, or use of, any part of the property does not mean that any necessary planning, building regulations or other consent has been obtained. A buyer or lessee must find out by inspection or in other ways that these matters have been properly dealt with and that all information is correct. 4. VAT: The VAT position relating to the property may change without notice. 5. To find out how we process Personal Data, please refer to our Group Privacy Statement and other notices at <https://www.knightfrank.com/legals/privacy-statement>.

Particulars dated January 2023. Photographs and videos dated June 2015.

All information is correct at the time of going to print. Knight Frank is the trading name of Knight Frank LLP. Knight Frank LLP is a limited liability partnership registered in England and Wales with registered number OC305934. Our registered office is at 55 Baker Street, London W1U 8AN. We use the term 'partner' to refer to a member of Knight Frank LLP or an employee or consultant. A list of members names of Knight Frank LLP may be inspected at our registered office. If you do not want us to contact you further about our services then please contact us by either calling 020 3544 0692, email to marketing.help@knightfrank.com or post to our UK Residential Marketing Manager at our registered office (above) providing your name and address.