



HUNTERS[®]
HERE TO GET *you* THERE

15 Doncaster Road, Selby, YO8 9BS

HUNTERS
HERE TO GET *you* THERE

15 Doncaster Road, Selby, YO8 9BS

Guide Price £180,000

DESCRIPTION

NO ONWARD CHAIN. Hunters Selby are delighted to be able to offer for sale this four bedroom semi detached Victorian house situated within close proximity to Selby town centre. The property benefits from a gas central heating system, UPVC double glazing and briefly comprises an entrance hall, living room, dining room, kitchen and utility room to the ground floor. To the first floor are four bedrooms and a bathroom. To the front of the property there is a courtyard style low maintenance garden. To the rear of the property there is a low maintenance paved courtyard garden with mature shrubs, two outbuildings and fencing around the perimeter. An internal inspection comes highly recommended to appreciate the accommodation on offer. Call Hunters Selby, seven days a week to book a viewing.

LOCATION

Selby Market town has a selection of shops, pubs, restaurants and a bustling market once a week. This property is ideally situated within easy walking distance of all local amenities including three main Supermarkets, Abbey Walk Retail Park and the Market Cross Shopping Centre, Railway Station, Bus Station and the famous Selby Abbey. The city of York is approximately fourteen miles away and the new by-pass has enhanced the road networks with easy access to York, Leeds, Castleford, Doncaster with excellent road communications being A19, M62, A1041, A1 and M18.

DIRECTIONS

From Selby, continue onto Brook Street/ A19 and the property can be identified on the left hand side by our Hunters for sale board.

Material Information - Selby

Tenure Type; Freehold
Council Tax Banding; C
EPC Rating : D

Hunters Selby 23 Finkle Street, Selby, YO8 4DT | 01757 210884
selby@hunters.com | www.hunters.com

Doncaster Road, YO8

Approximate Area = 1368 sq ft / 127 sq m

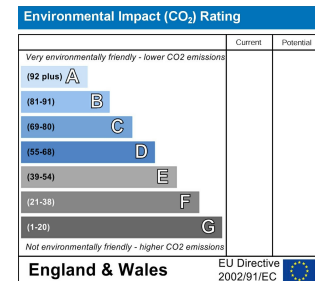
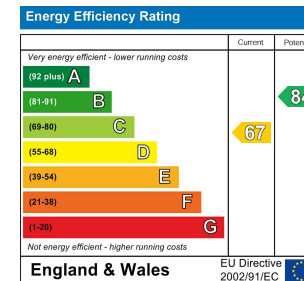
Outbuilding = 75 sq ft / 7 sq m

Total = 1443 sq ft / 134 sq m

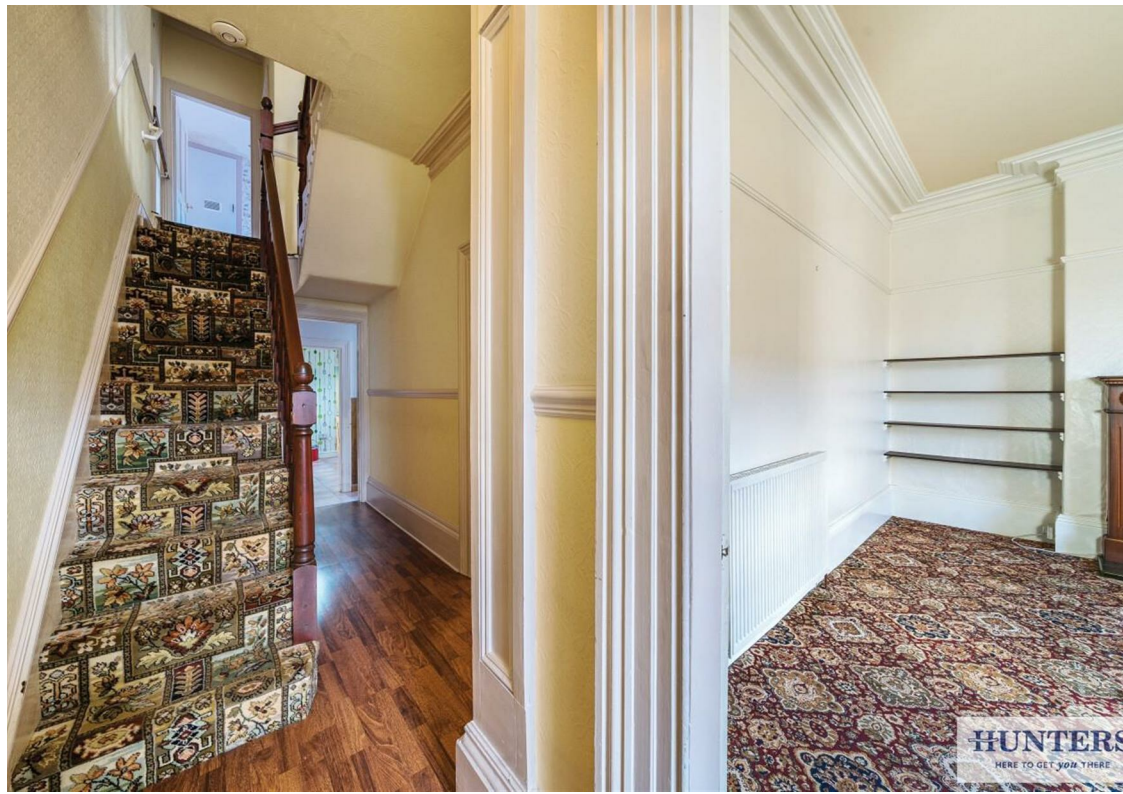
For identification only - Not to scale



Floor plan produced in accordance with RICS Property Measurement Standards incorporating International Property Measurement Standards (IPMS2 Residential). © nitchecom 2024. Produced for Hunters Property Group. REF: 1198312











HUNTERS
HERE TO GET YOU THERE



HUNTERS
HERE TO GET YOU THERE



HUNTERS
HERE TO GET YOU THERE



HUNTERS
HERE TO GET YOU THERE



HUNTERS
HERE TO GET *you* THERE