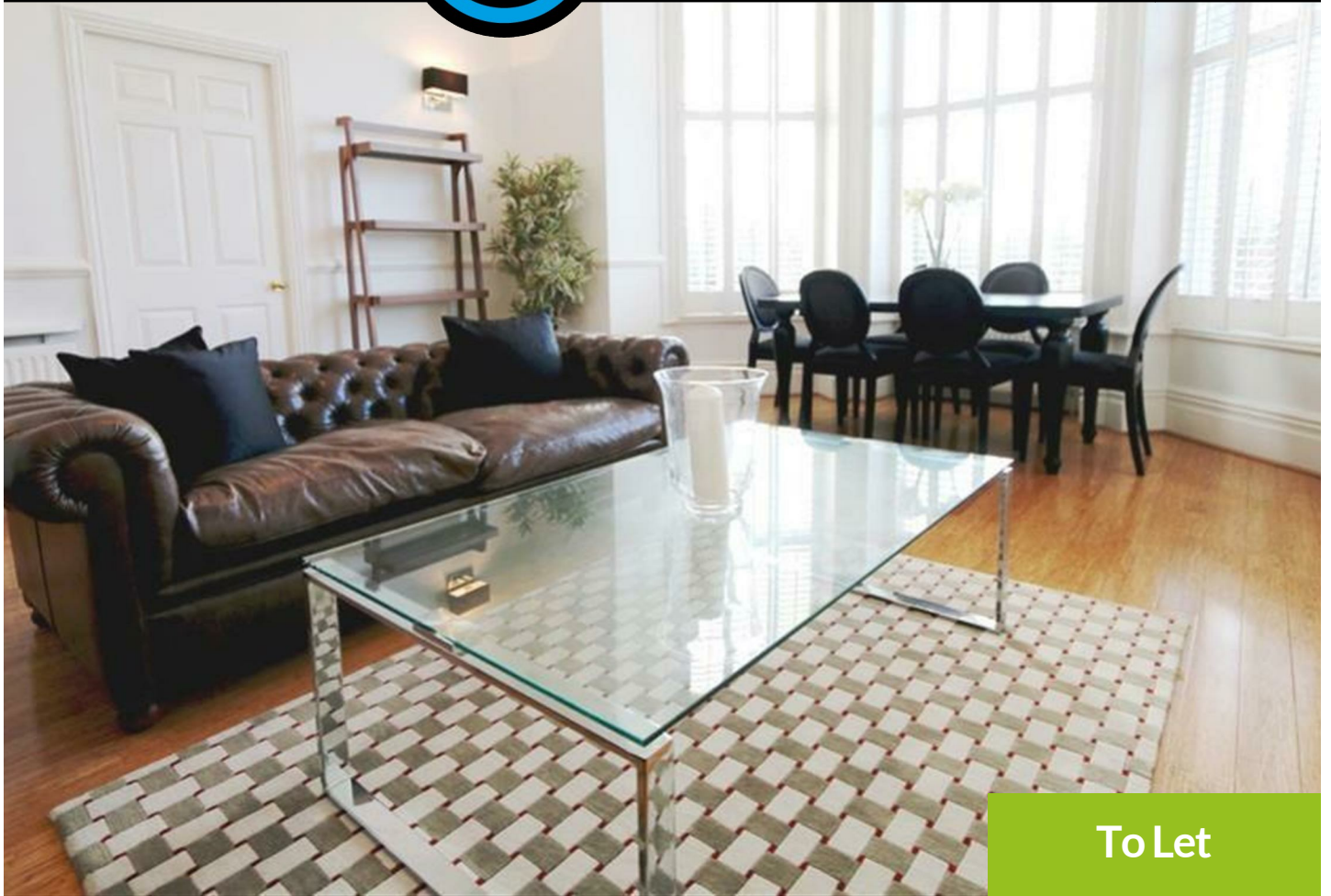




**WALTON  
ROBINSON**



**To Let**

## Flat 2, 3 Abbotsford Terrace, Jesmond NE2 3AD

£1,735 PCM



Stunning two bed apartment situated in the Brandling Park area of JESMOND. With open views over the town moor and just a short walk to the City Centre.

The first floor apartment has a stunning open plan living and dining area, with high ceilings and large bay which overlooks the communal manicured gardens. There is a fully fitted kitchen, to include all appliances, and granite work surfaces.

The hallway leads through to family bathroom, which has been decorated to a high standard, fully tiled with rain shower over bath. To the rear of the apartment there is a master bedroom with fully fitted wardrobes and newly decorated en-suite shower room.



- £1,735 PCM
- Two bed apartment
- Stunning interiors
- Walking distance to the City Centre
- Available 11th September
- Spacious open plan living/dining
- En-suite to master bedroom
- Council tax band E

101 Percy Street, City Centre, Newcastle upon Tyne, NE1 7RY  
T: 01912431000 | Email: [enquiries@seekersproperty.co.uk](mailto:enquiries@seekersproperty.co.uk) | [www.waltonrobinson.com](http://www.waltonrobinson.com)