



**WALTON
ROBINSON**



To Let

55 Lonsdale Court, Jesmond NE2 3HF

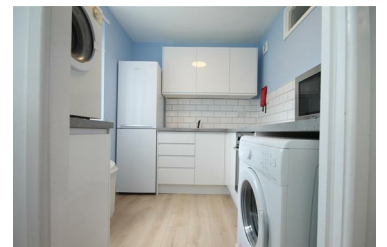
£1,295 PCM



Top floor two bedroom apartment to rent in Lonsdale Court, Jesmond. The property is situated right next to West Jesmond Metro Station providing easy access into the City Centre for both professionals or students. There are also a number of amenities within close proximity with shops, restaurants and pubs nearby.

The property is comprised of two generous double bedrooms, complete with bed, desk and wardrobe. There is a spacious lounge, which offers a large leather sofa and table & chairs with a small fitted kitchen running off it. The kitchen has all the essential appliances provided. To the middle of the property you will find the family bathroom, with shower over bath. The property further benefits from uPVC double glazing and electric heating. For those with cars there is on street permit parking available.

- £149.01PPPW / £1,295PCM
- Lounge / Dining Area
- Family Bathroom
- Permit Parking Available
- Double Glazing
- Two Double Bedroom
- Fitted Kitchen
- Entry Phone System
- Close to West Jesmond Metro
- Available 14/09/24



101 Percy Street, City Centre, Newcastle upon Tyne, NE1 7RY
T: 01912431000 | Email: enquiries@seekersproperty.co.uk | www.waltonrobinson.com