



**WALTON  
ROBINSON**



**To Let**

## 6B Lansdowne Terrace, NE3 1HN

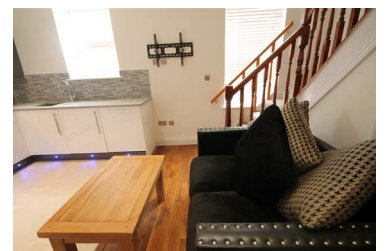
£875 PCM



STUNNING DUPLEX apartment available to rent within fabulous block located in the heart of Gosforth, with easy reach of all the fantastic local amenities which the high street has to offer. This first floor apartment has been newly refurbished throughout to an excellent standard. There is a high spec kitchen with fully integrated appliances which is open plan with the lounge. There is one double bedroom, with fully tiled en-suite shower room and built in storage. Neutral decor and contemporary fixtures and fittings feature throughout.

\*\*All property descriptions are assumed correct at time of publication. Any reference to property details, specifications or other inclusions are subject to change and may be altered at any given time.

- £875PCM
- Available 28/05/24 - 11 Month Minimum Term
- Luxury Duplex
- Modern Finish Throughout
- One Double Bedroom - Fully Furnished
- Can Include Utilities For Additional £75PCM\*
- \*(Does not include wifi, Council Tax or TV license)
- One Shower Room
- Parking Available By Separate Negotiation
- Council Tax Band A



101 Percy Street, City Centre, Newcastle upon Tyne, NE1 7RY

T: 01912431000 | Email: [enquiries@seekersproperty.co.uk](mailto:enquiries@seekersproperty.co.uk) | [www.waltonrobinson.com](http://www.waltonrobinson.com)