



**WALTON
ROBINSON**



To Let

85 Holly Avenue, Jesmond NE2 2QB

£2,998 PCM

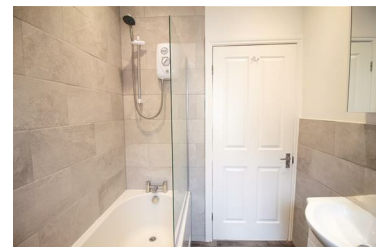


AVAILABLE JULY! Spacious six bedroom house located in the sought after area of Jesmond. The property is situated within walking distance of the popular student area Jesmond. Ideal location for both Newcastle and Northumbria University Students. This property is also within walking distance of 2 metro stations, 2 stops away from the centre of Newcastle

The property has been furnished to a high standard, and is comprised of six double bedrooms, all completed with a bed, desk and wardrobe. The spacious lounge has two large leather sofas and a modern kitchen equipped with all the essential appliances, including a dishwasher and a washer/dryer. There are two bathrooms within the property, including a shower over the bath. Ideal for a group of six.

The property further benefits from gas central heating throughout and for those with cars, there is permit parking on the street.

- Large Full House
- Newly Fitted Bathrooms
- £115PPPW - £2,998PCM
- Available 06/07/24
- Six Double Bedrooms
- Sought After Location
- Modern Fitted Kitchen
- COUNCIL TAX BAND - B



101 Percy Street, City Centre, Newcastle upon Tyne, NE1 7RY

T: 01912431000 | Email: enquiries@seekersproperty.co.uk | www.waltonrobinson.com