



75 OAK ROAD

Bishops Waltham, SO32 1ER

Asking Price £274,000

WELLER  
PATRICK





## PROPERTY FEATURES

A spacious three-bedroom family home in a popular location close to local schools with no forward chain

Entrance Hall • Cloakroom • Kitchen • Spacious Lounge • Three Bedrooms • Family Bathroom

Front & Rear Gardens • Brick Built Shed • No Forward Chain • Viewing Recommended





## DESCRIPTION

A spacious three-bedroom house offered with no forward chain and situated within this popular location close to the centre of Bishops Waltham which offers a range of shops and services.

The property is also within close proximity to Bishops Waltham Infant and Junior schools.

The accommodation on the ground floor comprises an entrance hall with access to a cloakroom and a spacious lounge. The kitchen has double doors to the rear garden.

On the first floor there are three bedrooms and a bathroom.

Outside the property features a rear garden and brick built shed.

Oak Road is well placed for easy access to Bishops Waltham with its traditional high street and selection of shops and small businesses.

Bishops Waltham is within reach of Winchester, Southampton, the M3 and M27 motorways and the rail network from Botley and Hedge End stations which offer direct mainline access to London.

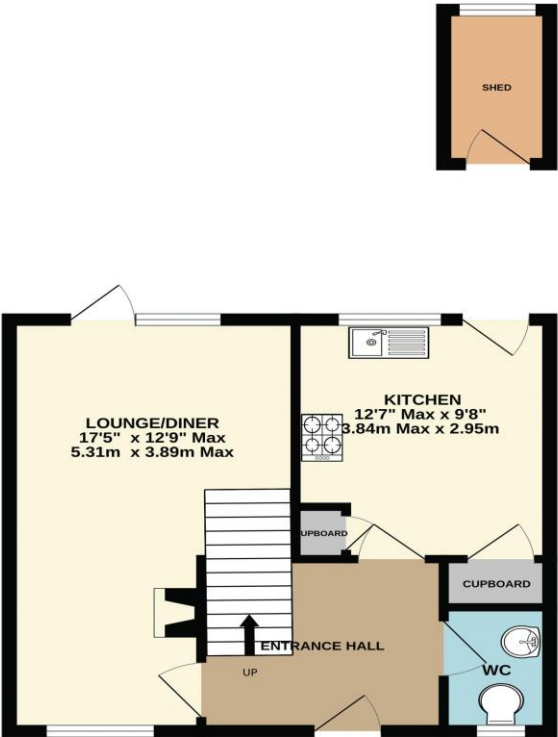
Viewing is recommended to appreciate the space this home has to offer.

75 Oak Road  
Bishops Waltham  
SO32 1ER

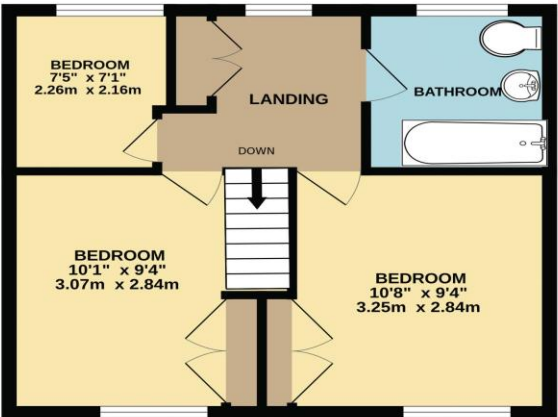


**DIRECTIONS**  
From the top of the High Street in Bishops Waltham turn right into Bank Street and proceed into Hoe Road. At the mini roundabout turn left into Willow Road. Turn right into Oak Road and the property can be found on the right hand side.

GROUND FLOOR



1ST FLOOR

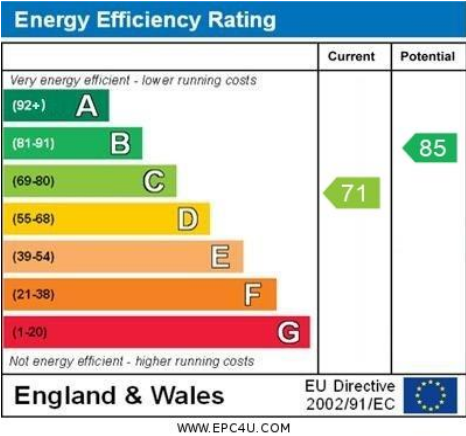


Particulars amended 2<sup>nd</sup> December 2025

**LOCAL AUTHORITY AND SERVICES**

Winchester City Council  
Council tax band B  
Services Mains gas, electricity, water & drainage

**VIEWINGS**  
By appointment through Weller Patrick.  
Tel: 01489 893555



Whilst every attempt has been made to ensure the accuracy of the floorplan contained here, measurements of doors, windows, rooms and any other items are approximate and no responsibility is taken for any error, omission or mis-statement. This plan is for illustrative purposes only and should be used as such by any prospective purchaser. The services, systems and appliances shown have not been tested and no guarantee as to their operability or efficiency can be given.  
Made with Metropix ©2025