

DESBOROUGH

Winchester Road, Waltham Chase, SO32 2NA

Asking Price £670,000

WELLER
PATRICK



PROPERTY FEATURES

A detached, spacious, individual family home offering four/five bedrooms with a generous garden and ample parking

Entrance Hall • Sitting Room • Dining Room • Conservatory • Kitchen • Utility Room • Boot Room

Study / Bedroom Five • Four Bedrooms • Bathroom • Shower Room

Good Size Garden • Ample Parking • Viewing Recommended



DESCRIPTION

This attractive and spacious four/five bedroom individual detached property is conveniently situated in the popular village of Waltham Chase with the charming and historic country town of Bishops Waltham being within a short drive.

The property benefits from good room sizes and features accommodation including two attractive first floor bedrooms and a shower room, two bedrooms on the ground floor and a study. The lounge with log burning stove is of a good size with a wide bay window overlooking the garden. There is also a dining room, conservatory and kitchen plus a utility.

The property benefits from a good sized plot overall with lawned rear garden and workshop and to the front and side a significant driveway and wide side area all providing extensive parking for several vehicles and room to extend if required.

The major centres of Winchester, Southampton, Portsmouth and Fareham are easily accessible by road as is motorway access and rail services to London. The area surrounding the village is predominantly rural with much open countryside and with walks and rides to be enjoyed.

Within the village of Waltham Chase is a well regarded primary school, village store and in Bishops Waltham a range of shops and services from its traditional high street. The secondary school is in nearby Swanmore.

The Meon Valley with its pretty villages and South Downs National Park are also nearby.

Viewing is highly recommended.

DIRECTIONS

From Bishops Waltham take the B2177 to Waltham Chase. Proceed through the traffic lights, past Linden Close and the property will then be seen on the left.

Particulars prepared 8th April 2025

LOCAL AUTHORITY AND SERVICES

Winchester City Council

Council tax band E

Services mains electricity, gas, water and drainage.

VIEWINGS

By appointment through Weller Patrick.

Tel: 01489 893555

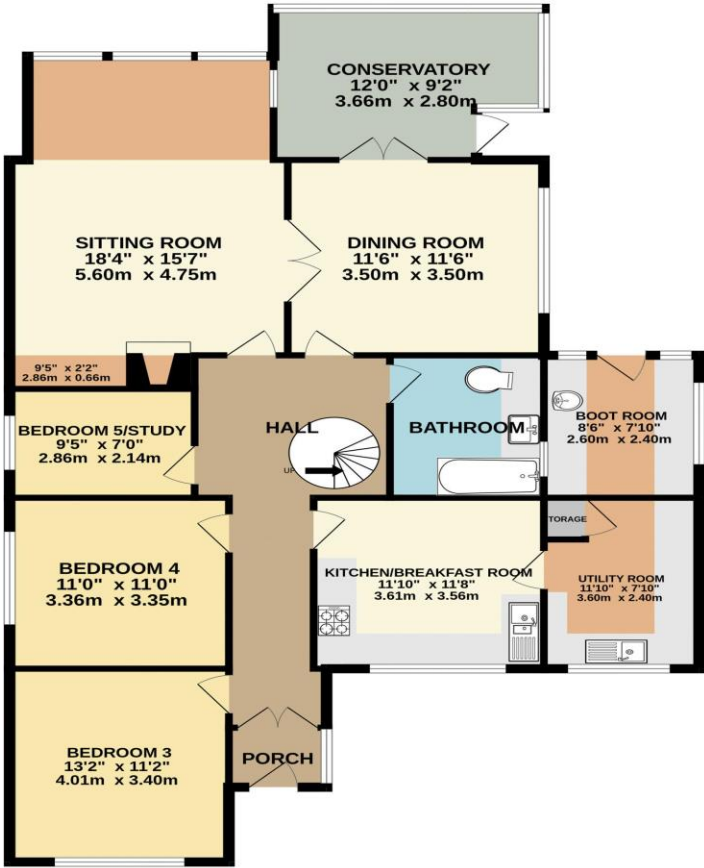




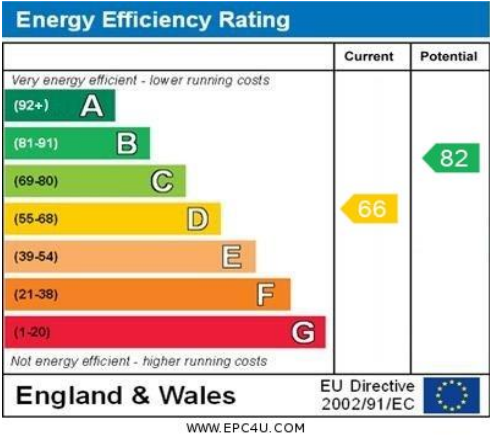
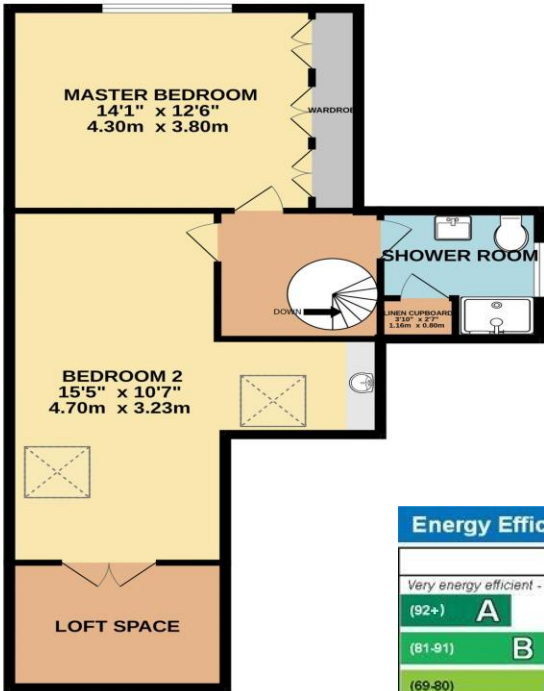
Desborough
Winchester Road
Waltham Chase
SO32 2NA



GROUND FLOOR



1ST FLOOR



Whilst every attempt has been made to ensure the accuracy of the floorplan contained here, measurements of doors, windows, rooms and any other items are approximate and no responsibility is taken for any error, omission or mis-statement. This plan is for illustrative purposes only and should be used as such by any prospective purchaser. The services, systems and appliances shown have not been tested and no guarantee as to their operability or efficiency can be given.
Made with Metropix ©2025