



**WELLER
PATRICK**

6 THE YEW TREES

Lower Lane, Bishops Waltham, SO32 1AS

Asking Price £235,000



PROPERTY FEATURES

A spacious two-bedroom first floor apartment in a convenient location for easy access to the town centre
Open Plan Kitchen/Living Room/ Dining Room • Two Bedrooms • En-suite Shower Room • Bathroom
Communal Parking • Double Glazing • Gas Central Heating • Viewing Recommended



DESCRIPTION

A spacious two-bedroom apartment with parking and benefitting from being on the first floor with both staircase and lift access.

The property is situated within The Yew Trees which is a small individual development of only ten apartments which enjoy a convenient location just a short distance of Bishops Waltham's Town Centre which offers a range of shops and services.

The accommodation comprises a pleasant double aspect open plan kitchen / living / dining room, two bedrooms including bedroom one with an en-suite shower room and also a main bathroom.

Other benefits of this property include communal parking, a secure door entry system, an allocated storage shed, double glazing and gas central heating.

The centre of the country town of Bishops Waltham is within walking distance and features most of what you need for day to day living plus restaurants, coffee shops, bakery and butchers, post office and a Doctors surgery. There is also a small Sainsbury's.

More extensive shopping facilities are found at the larger centres of Fareham, Portsmouth, Southampton and Winchester.

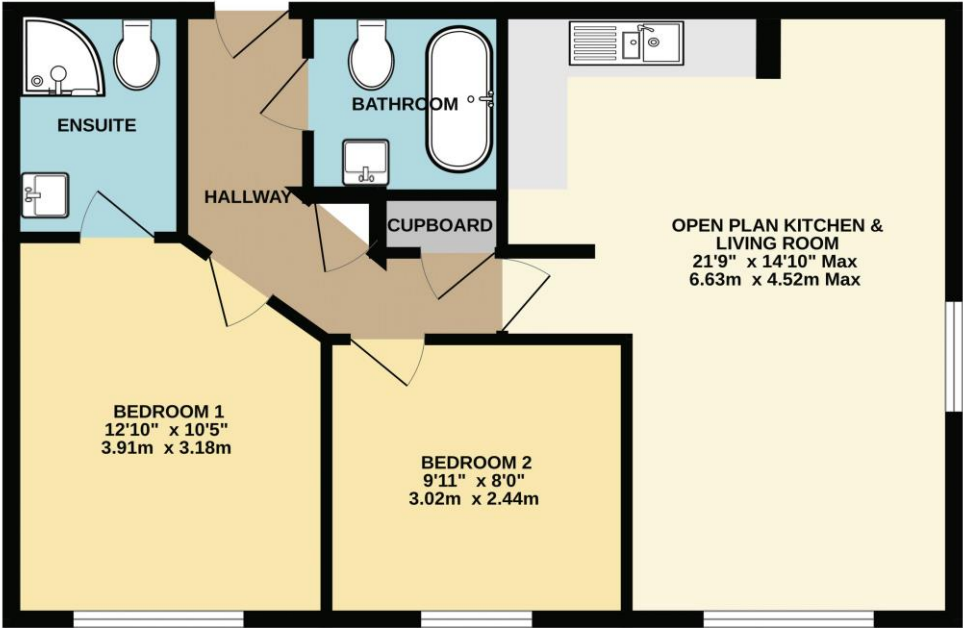
The area surrounding Bishops Waltham offers much open countryside with walks and rides to be enjoyed.

Viewing is recommended to appreciate all this apartment has to offer.

6 The Yew Trees
Lower Lane
Bishops Waltham
SO32 1AS



FIRST FLOOR APARTMENT



Whilst every attempt has been made to ensure the accuracy of the floorplan contained here, measurements of doors, windows, rooms and any other items are approximate and no responsibility is taken for any error, omission or mis-statement. This plan is for illustrative purposes only and should be used as such by any prospective purchaser. The services, systems and appliances shown have not been tested and no guarantee as to their operability or efficiency can be given.
Made with Metroplan ©2025

DIRECTIONS
From the centre of Bishops Waltham turn left through the one way system and follow Lower Lane At the junction with the Corhampton Road turn right and The Yew Trees will be seen on the right.

LOCAL AUTHORITY AND SERVICES

Winchester City Council
Council tax band C
Services Mains electricity, gas, water and drainage. Gas central heating.

VIEWINGS
By appointment through Weller Patrick.
Tel: 01489 893555

