

20 PIPING GREEN

Colden Common, Winchester, SO21 1TU

Asking Price £465,000

WELLER
PATRICK

FOR SALE 01489 893555
www.wellerpatrick.co.uk

WELLER
PATRICK



PROPERTY FEATURES

A spacious four-bedroom family home offered with no forward chain in a sought-after village location

Entrance Hall • Lounge • Dining Room • Kitchen • Study • Cloakroom

Four Bedrooms • Family Bathroom • Front & Rear Gardens • Double Garage

Viewing Recommended • No Forward Chain



DESCRIPTION

This spacious four-bedroom family home is offered with no forward chain and situated within this sought after village location.

The accommodation on the ground floor comprises an entrance hall, lounge, dining room, kitchen, study and cloakroom.

To the first floor are four bedrooms and a family bathroom.

Outside, there is an enclosed rear garden with patio, lawn and established borders. There is a double garage to the rear of the garden with an up & over door to the front and a door to the garden.

Colden Common village is approximately 5.5 miles from Winchester; its amenities include a Co-op store/post office, a community centre, two outstanding pre-schools and in the Winchester catchment Senior schools, a doctor's surgery and pharmacy as well as two pubs and a primary school. Winchester has a more comprehensive range of shops, fine restaurants and bars.

The M3 and M27 are within easy reach and Shawford railway station is approximately 1 mile away with a direct line to London Waterloo in 1 hour 14 minutes.

Internal viewing is recommended to appreciate all this spacious home has to offer.

20 Piping Green
Colden Common
SO21 1TU



DIRECTIONS
From Bishops Walthams main roundabout take the B2177 towards Winchester, proceed through the village of Upham to the T junction and traffic lights at Fishers Pond, turn right heading towards Colden Common and Winchester. At the roundabout turn left and then take the third right into Brickmakers Road and first left into Piping Road, Piping Green can be found on the right-hand side after a short distance.

Particulars amended 3rd March 2025

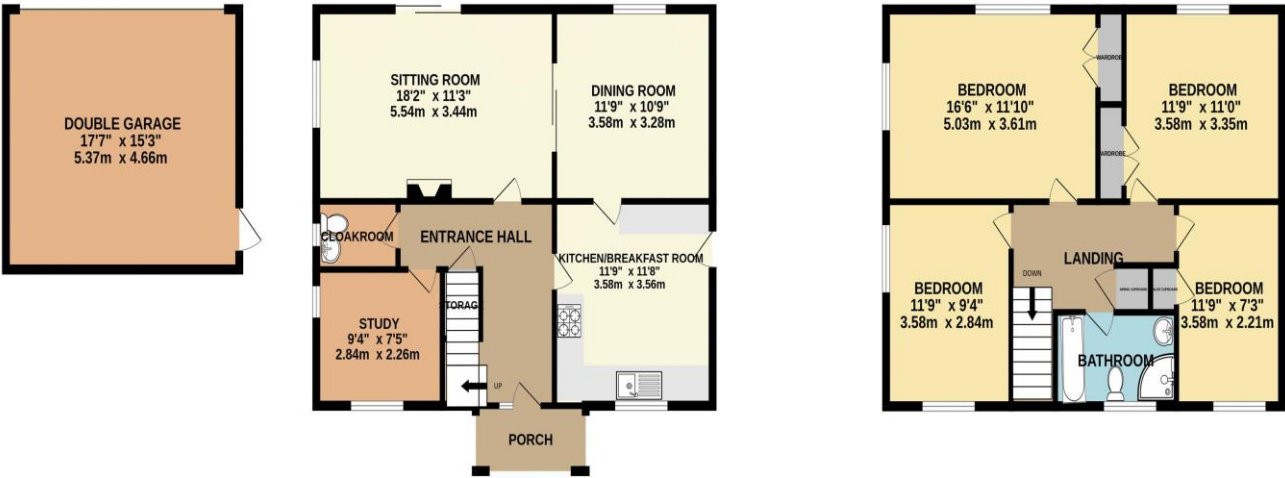
LOCAL AUTHORITY AND SERVICES

Winchester City Council, Council tax band E
Services Mains electricity, gas, water and drainage

VIEWINGS
By appointment through Weller Patrick.
Tel: 01489 893555

GROUND FLOOR

1ST FLOOR



Whilst every attempt has been made to ensure the accuracy of the floorplan contained here, measurements of doors, windows, rooms and any other items are approximate and no responsibility is taken for any error, omission or mis-statement. This plan is for illustrative purposes only and should be used as such by any prospective purchaser. The services, systems and appliances shown have not been tested and no guarantee as to their operability or efficiency can be given.
Made with Metropix ©2024

