

# Bay Tree Cottage

2 Bridge Street, Wickham, PO7 5JE

Price £399,950



**WELLER  
PATRICK**



## PROPERTY FEATURES

Delightful character two bedroom cottage with attractive garden, situated a short distance from Wickham square

Two Double Bedrooms • Bedroom One With Dressing Area • Sitting Room • Dining Room • Kitchen

Bathroom • Garden • Convenient location

Viewing recommended



## DESCRIPTION

With ideal access to Wickham Square Bay Tree Cottage is a charming Grade II Listed property with a wealth of original character features.

The property has two reception rooms with the sitting room having an Inglenook fireplace with a wood burning stove, kitchen with views over the rear garden and bathroom on the ground floor. Upstairs are the two bedrooms one with a dressing area and a room off the stairs which is currently used as a utility room.

Outside is an attractive rear courtyard garden which includes a pergola covered patio, a range of plants and shrubs, along with a brick built shed and a log store.

The property is situated within the pretty market town of Wickham, that hosts a range of shops, pubs and eateries. The village is surrounded by the beautiful South Downs, with its many scenic walks and network of bridal ways.

The village is situated only minutes from neighbouring Bishops Waltham and Botley, with its mainline railway station. Both the Cathedral City of Winchester and Southampton Airport are also just over half an hour away with all main motorway access routes being close by, providing easy access for Southampton, Portsmouth, Chichester, Guildford and London.

Bay Tree Cottage  
 2Bridge Street  
 Wickham  
 PO7 5JE



LOCAL AUTHORITY AND SERVICES  
 Winchester City Council  
 Council Tax band D  
 Main drainage, gas fired heating

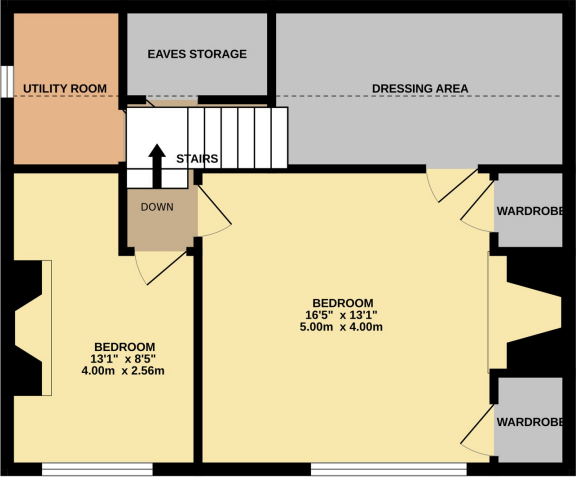
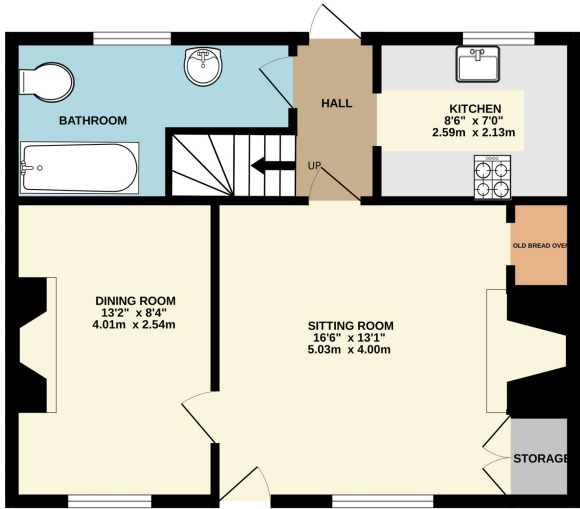
VIEWINGS  
 By appointment through Weller Patrick.  
 Tel: 01489 893555

DIRECTIONS  
 Turn From Bishops Waltham take the B2177 towards Wickham, continue into the square and proceed into Bridge Street and the property can be found on the right hand side located by our for sale sign.

Particulars prepared 17th May 2024

GROUND FLOOR

1ST FLOOR



Whilst every attempt has been made to ensure the accuracy of the floorplan contained here, measurements of doors, windows, rooms and any other items are approximate and no responsibility is taken for any error, omission or mis-statement. This plan is for illustrative purposes only and should be used as such by any prospective purchaser. The services, systems and appliances shown have not been tested and no guarantee as to their operability or efficiency can be given.  
 Made with Metropix ©2024

