



STATION ROAD, SHIPLAKE, RG9



A CHARMING EDWARDIAN DETACHED FAMILY HOME

Once the childhood home of novelist George Orwell, the property offers well-proportioned rooms with many character features, including leaded windows, high ceilings and cornicing. The property sits in a lovely private garden with a gated driveway.



Local Authority: South Oxfordshire District Council

Council Tax band: G

Tenure: Freehold

Services: Mains electricity, gas, drainage and water



THE PROPERTY

The front door opens into an oak panelled hall leading into an inner hallway with doors leading to the reception rooms and kitchen. The spacious double-aspect sitting room has a bay window, marble fireplace, and oak parquet flooring that continues through the hallway. A second reception room with French doors to the garden may serve as a fourth bedroom/family room or a study. A spacious, fully fitted kitchen/dining room has a range of integrated appliances and double doors leading to the garden. From the kitchen is a utility room with access to the garden and a small garden room.

An elegant staircase leads to the three double bedrooms. The principal bedroom has fitted wardrobes, an en suite bathroom and a dressing room. Two further bedrooms have en suites, and one has access to a separate room and balcony. All bedrooms have wooden flooring.

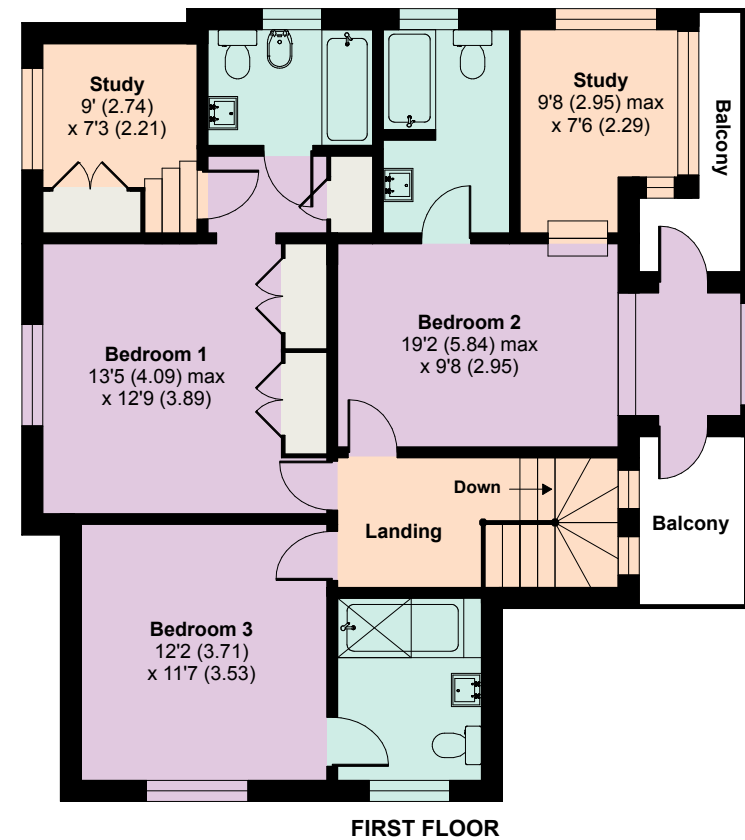
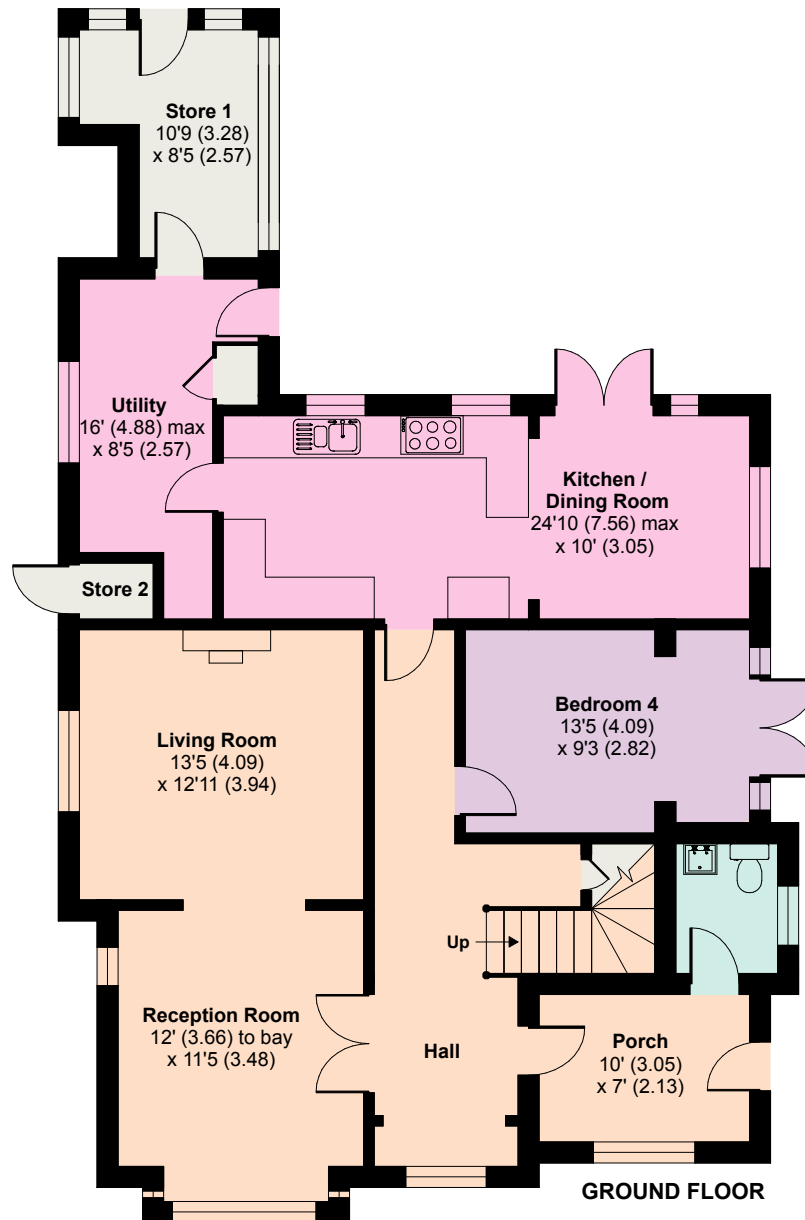
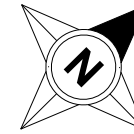






Approximate Area = 2177 sq ft / 202.2 sq m (excludes store 2)

For identification only - Not to scale



This plan is for layout guidance only. Not drawn to scale unless stated. Windows and door openings are approximate. Whilst every care is taken in the preparation of this plan, please check all dimensions, shapes and compass bearings before making any decisions reliant upon them. (ID767266)

We would be delighted
to tell you more.

Jason Applebey
01491 844917
jason.applebey@knightfrank.com

Knight Frank Henley
20 Thameside
Henley-on-Thames, RG9 2LJ

knightfrank.co.uk

Your partners in property

1. Particulars: These particulars are not an offer or contract, nor part of one. You should not rely on statements given by Knight Frank in the particulars, by word of mouth or in writing ("information") as being factually accurate about the property, its condition or its value. Neither Knight Frank nor any joint agent has any authority to make any representations about the property, and accordingly any information given is entirely without responsibility on the part of Knight Frank. 2. Material Information: Please note that the material information is provided to Knight Frank by third parties and is provided here as a guide only. While Knight Frank has taken steps to verify this information, we advise you to confirm the details of any such material information prior to any offer being submitted. If we are informed of changes to this information by the seller or another third party, we will use reasonable endeavours to update this as soon as practical. 3. Photos, Videos etc: The photographs, property videos and virtual viewings etc. show only certain parts of the property as they appeared at the time they were taken. Areas, measurements and distances given are approximate only. 4. Regulations etc: Any reference to alterations to, or use of, any part of the property does not mean that any necessary planning, building regulations or other consent has been obtained. A buyer must find out by inspection or in other ways that these matters have been properly dealt with and that all information is correct. 5. Fixtures and fittings: A list of the fitted carpets, curtains, light fittings and other items fixed to the property which are included in the sale (or may be available by separate negotiation) will be provided by the Seller's Solicitors. 6. VAT: The VAT position relating to the property may change without notice. 7. To find out how we process Personal Data, please refer to our Group Privacy Statement and other notices at <https://www.knightfrank.com/legals/privacy-statement>.

Particulars dated April 2025. Photographs and videos dated April 2025. All information is correct at the time of going to print. Knight Frank is the trading name of Knight Frank LLP. Knight Frank LLP is a limited liability partnership registered in England and Wales with registered number OC305934. Our registered office is at 55 Baker Street, London W1U 8AN. We use the term 'partner' to refer to a member of Knight Frank LLP, or an employee or consultant. A list of members names of Knight Frank LLP may be inspected at our registered office. If you do not want us to contact you further about our services then please contact us by either calling 020 3544 0692, email to marketing.help@knightfrank.com or post to our UK Residential Marketing Manager at our registered office (above) providing your name and address.