



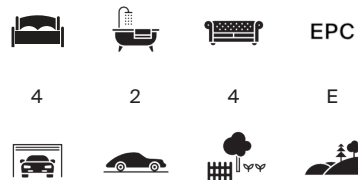
MOOR COMMON, LANE END

HP14 3HU



CHARMING COTTAGE IN A VILLAGE LOCATION

April Cottage combines historical charm with modern amenities, and excellent ancillary accommodation.



Local Authority: Wycombe District Council

Council Tax band: G

Tenure: Freehold



APRIL COTTAGE

The Cottage, thought to date back to 1690, is a charming brick and flint property positioned on the edge of the hamlets of Frieth and Moor Common. Entering through the original front door, you are greeted by a hallway with space for coats and shoes. The ground floor features a cosy lounge, a spacious country kitchen with a traditional Aga, and a dining room with a wood burner. The living room and family room are filled with natural light, thanks to high ceilings and large windows.

The principal bedroom includes a freestanding bath overlooking the rear garden, ensuring privacy. There are a further three generously sized bedrooms providing comfortable accommodation for family and guests, one of which has an en suite bathroom. There is a flat above the garage and a garden / office studio.







SITUATION

Positioned near the village of Frieth, the property provides a perfect blend of rural tranquillity and modern convenience. The picturesque local countryside features rolling hills and ancient woodlands. This area is filled with villages that often serve as filming locations due to their timeless charm. Frieth Primary School is conveniently located 0.6 miles away. High Wycombe's vibrant town centre, approximately 5 miles away, offers a variety of shopping, dining, and entertainment options. The town also hosts the Eden Shopping Centre, featuring a broad range of retailers and eateries. Marlow like Henley is a wonderful riverside market town with great retail shops and restaurant. April Cottage is within catchment for Sir William Borlase Grammar School and three other Grammar Schools. Nature enthusiasts will enjoy the numerous walking and cycling paths that meander through the surrounding countryside, allowing for year-round outdoor activities. The nearby Chiltern Hills, an Area of Outstanding Natural Beauty, provide further opportunities for exploration and leisure.

Commuters will appreciate the excellent transport links. High Wycombe station, 5 miles away, provides regular services to London Marylebone with journey times of around 30 minutes. Maidenhead Great Western and Elizabeth Line – Paddington in 19 mins. Additionally, the M40 motorway is easily accessible, facilitating straightforward routes to London, Oxford, and Birmingham.

All times and distances are approximate.



GARDENS & GROUNDS

One of the standout features of April Cottage is its impressive plot. Surrounded by 2.5 acres of woodland, the 1 acre garden includes a sociable sun terrace and several seating areas for al-fresco dining. Children can enjoy playing football and cricket, and enjoy the woodlands close by. Additional amenities include a garage, a fully equipped gym, and a self-contained studio with a kitchenette and en suite shower facilities, ideal for guests or as a rental space. The property is a blend of comfort, style, and practicality, making it an ideal home for those seeking a tranquil yet luxurious lifestyle.

DIRECTIONS

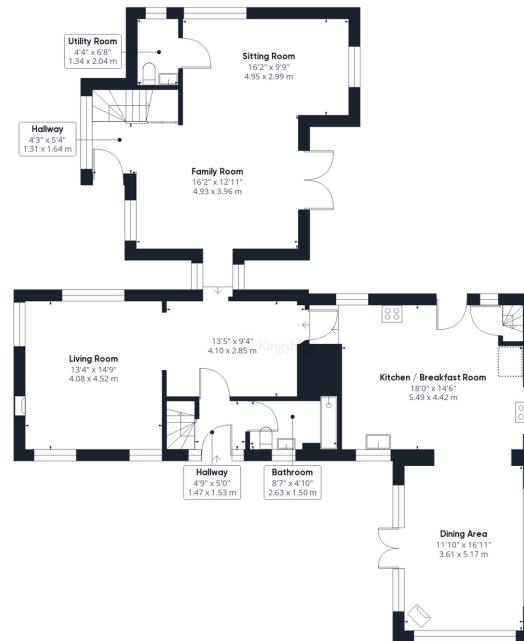
From the Henley office, turn right on to Hart Street. At the traffic lights, turn right into Bell Street and continue out of Henley towards Marlow; after approximately 3 miles, turn left at Mill End and continue on Skirmett Road until you reach Colstrove Lane on your right. Take a left turn to Moor Common via Freith. Once you reach Moor Common, continue until you reach Church Road, turn right, and immediately right again on a private drive. The property can be found at the end of this lane.

Whats3words:/// soil.thrillers.diamond





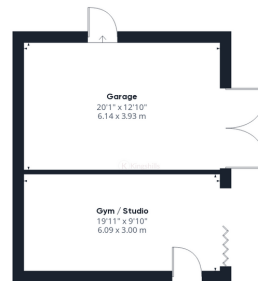




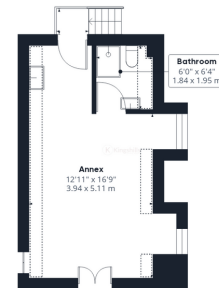
Ground Floor Building 1



Floor 1 Building 1



Ground Floor Building 2



Floor 1 Building 2



Ground Floor Building 3

Approximate Gross Internal Area = 291.55 sq m / 3138.25 sq ft

This plan is for layout guidance only. Not drawn to scale unless stated. Windows and door openings are approximate. Whilst every care is taken in the preparation of this plan, please check all dimensions, shapes and compass bearings before making any decisions reliant upon them. (ID767266)

We would be delighted
to tell you more.

Nick Warner
07970 887 247
nick.warner@knightfrank.com

20 Thameside
Henley-on-Thames
RG9 2LJ

[knightfrank.co.uk](https://www.knightfrank.co.uk)

Your partners in property

1. Particulars: These particulars are not an offer or contract, nor part of one. You should not rely on statements given by Knight Frank in the particulars, by word of mouth or in writing ("information") as being factually accurate about the property, its condition or its value. Neither Knight Frank nor any joint agent has any authority to make any representations about the property, and accordingly any information given is entirely without responsibility on the part of Knight Frank. 2. Material Information: Please note that the material information is provided to Knight Frank by third parties and is provided here as a guide only. While Knight Frank has taken steps to verify this information, we advise you to confirm the details of any such material information prior to any offer being submitted. If we are informed of changes to this information by the seller or another third party, we will use reasonable endeavours to update this as soon as practical. 3. Photos, Videos etc: The photographs, property videos and virtual viewings etc. show only certain parts of the property as they appeared at the time they were taken. Areas, measurements and distances given are approximate only. 4. Regulations etc: Any reference to alterations to, or use of, any part of the property does not mean that any necessary planning, building regulations or other consent has been obtained. A buyer must find out by inspection or in other ways that these matters have been properly dealt with and that all information is correct. 5. Fixtures and fittings: A list of the fitted carpets, curtains, light fittings and other items fixed to the property which are included in the sale (or may be available by separate negotiation) will be provided by the Seller's Solicitors. 6. VAT: The VAT position relating to the property may change without notice. 7. To find out how we process Personal Data, please refer to our Group Privacy Statement and other notices at <https://www.knightfrank.com/legals/privacy-statement>.

Particulars dated March 2025. Photographs and videos dated March 2025. All information is correct at the time of going to print. Knight Frank is the trading name of Knight Frank LLP. Knight Frank LLP is a limited liability partnership registered in England and Wales with registered number OC305934. Our registered office is at 55 Baker Street, London W1U 8AN. We use the term 'partner' to refer to a member of Knight Frank LLP, or an employee or consultant. A list of members names of Knight Frank LLP may be inspected at our registered office. If you do not want us to contact you further about our services then please contact us by either calling 020 3544 0692, email to marketing.help@knightfrank.com or post to our UK Residential Marketing Manager at our registered office (above) providing your name and address.