

Leopold Court, Princess Square, Esher, KT10





An Immaculately Presented Ground Floor Apartment

An immaculately presented two bedroom, two bathroom ground floor apartment built in 2010 by Royalton. Features include 2 underground parking spaces, air conditioning, underfloor heating, Crestron mood lighting, integrated Sonos sound system and a private terrace. Communal features include a concierge, communal gardens and gym.

Princess Square was designed by renowned architect Julian Bicknell and is a stunning gated development located within a short distance of Esher high street which has an excellent range of restaurants and shops including Waitrose, Cote, Giggling Squid, The Good Earth and Everyman Cinema along with a number of coffee shops and pubs.

Communication links are excellent with the station providing a fast and frequent service to London Waterloo, The A3 provides direct access to central London, the M25 and the South.

There is an excellent choice of recreational activities with Sandown Park offering horse racing, skiing, golf, go-karting, gym and squash, the historic Hampton Court Palace, the National Trust owned Claremont Landscaped Gardens all within the town.

The towns of Kingston upon Thames and Guildford are a short distance away providing a wide selection of high street names and department stores.

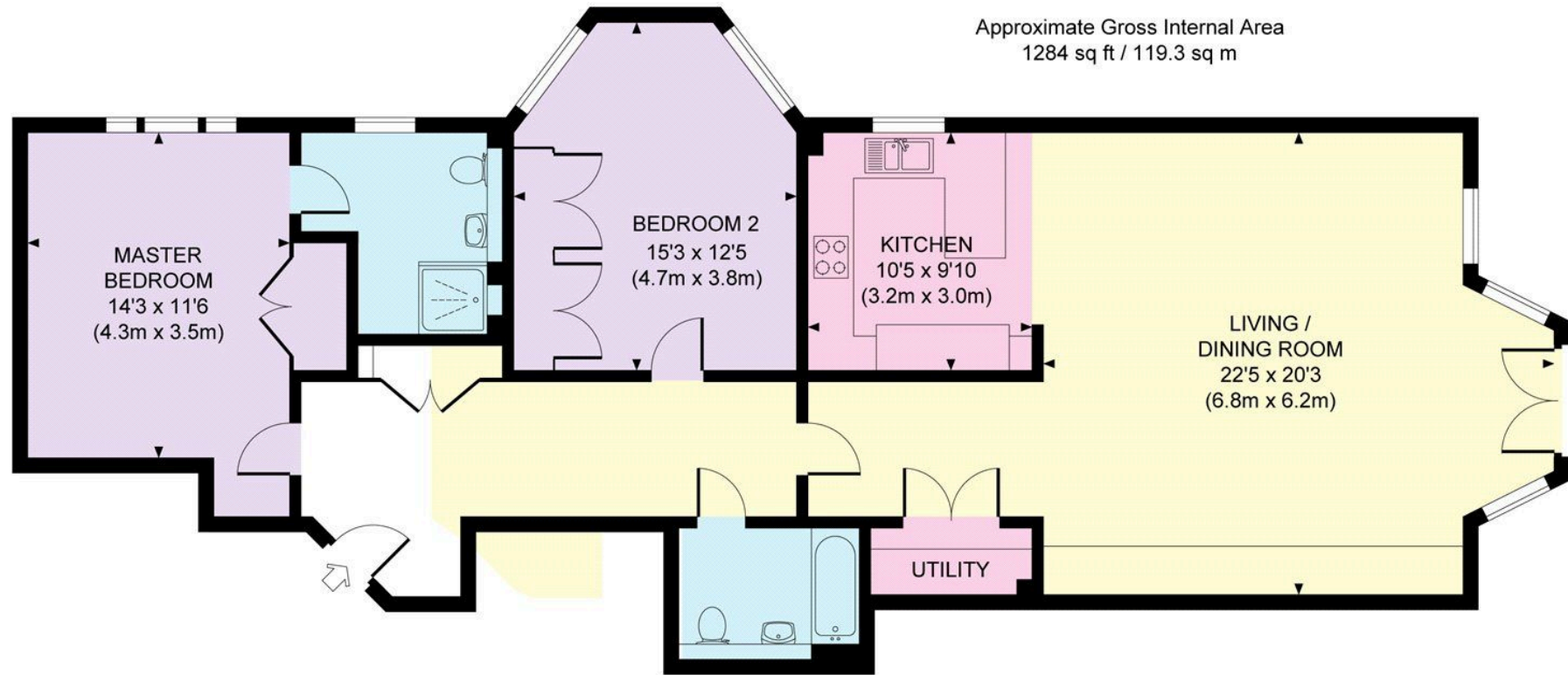




Council Tax
Band: G
Local Authority:
Elmbridge
Borough
Council







Knight Frank

47 High Street
Esher
Surrey KT10 9RL
knightfrank.co.uk

We would be delighted to tell you more

Adam Burlison
01372 239 984
adam.burlison@knightfrank.com

Maisie Bywater
01372 885661
maisie.bywater@knightfrank.com

Amanda Lamble
01372 460892
amanda.lamble@knightfrank.com



Fixtures and fittings: A list of the fitted carpets, curtains, light fittings and other items fixed to the property which are included in the sale (or may be available by separate negotiation) will be provided by the Seller's Solicitors.

Important Notice: 1. Particulars: These particulars are not an offer or contract, nor part of one. You should not rely on statements by Knight Frank LLP in the particulars or by word of mouth or in writing ("information") as being factually accurate about the property, its condition or its value. Neither Knight Frank LLP nor any joint agent has any authority to make any representations about the property, and accordingly any information given is entirely without responsibility on the part of the agents, seller(s) or lessor(s). 2. Photos, Videos etc: The photographs, property videos and virtual viewings etc. show only certain parts of the property as they appeared at the time they were taken. Areas, measurements and distances given are approximate only. 3. Regulations etc: Any reference to alterations to, or use of, any part of the property does not mean that any necessary planning, building regulations or other consent has been obtained. A buyer or lessee must find out by inspection or in other ways that these matters have been properly dealt with and that all information is correct. 4. VAT: The VAT position relating to the property may change without notice. 5. To find out how we process Personal Data, please refer to our Group Privacy Statement and other notices at <https://www.knightfrank.com/legals/privacy-statement>. Particulars dated September 2024. Photographs and videos dated September 2024.

Knight Frank is the trading name of Knight Frank LLP. Knight Frank LLP is a limited liability partnership registered in England and Wales with registered number OC305934. Our registered office is at 55 Baker Street, London W1U 8AN where you may look at a list of members' names. If we use the term 'partner' when referring to one of our representatives, that person will either be a member, employee, worker or consultant of Knight Frank LLP and not a partner in a partnership. If you do not want us to contact you further about our services then please contact us by either calling 020 3544 0692, email to marketing.help@knightfrank.com or post to our UK Residential Marketing Manager at our registered office (above) providing your name and address.