

Beeches Close, Kingswood, Tadworth **KT20**





BROWNSTACKS

A Beautifully Refurbished Home

Located in the heart of the Kingswood estate and situated behind electric gates, the property has been extensively renovated and refurbished throughout providing over 7,000 sq ft of accommodation in grounds of 0.5 acre.

The property benefits from six bedroom suites, including an impressive principal suite with spacious bathroom and dressing room. The ground floor offers five reception rooms, large open plan kitchen/breakfast room and an impressive vaulted pool complex with gym.



Tenure: Available freehold

Local authority: Reigate and Banstead

Council tax band: H



Location
description:
Kingswood village -
0.5 miles
J8 M25 - 4 miles
Banstead - 3 miles
Epsom - 5.5 miles
Reigate - 6 miles





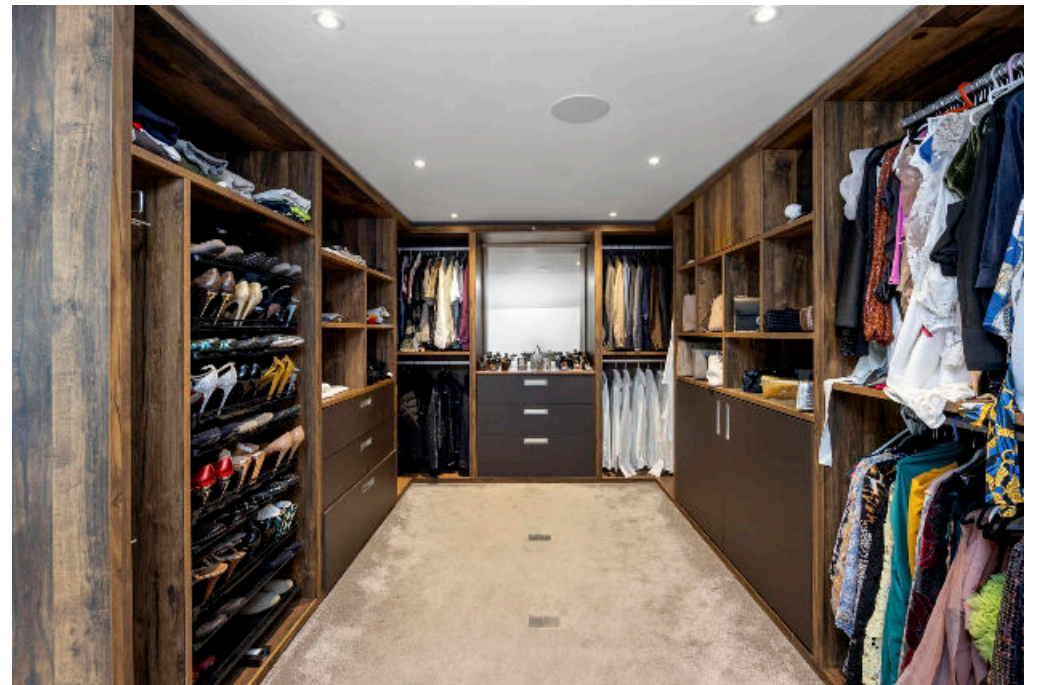
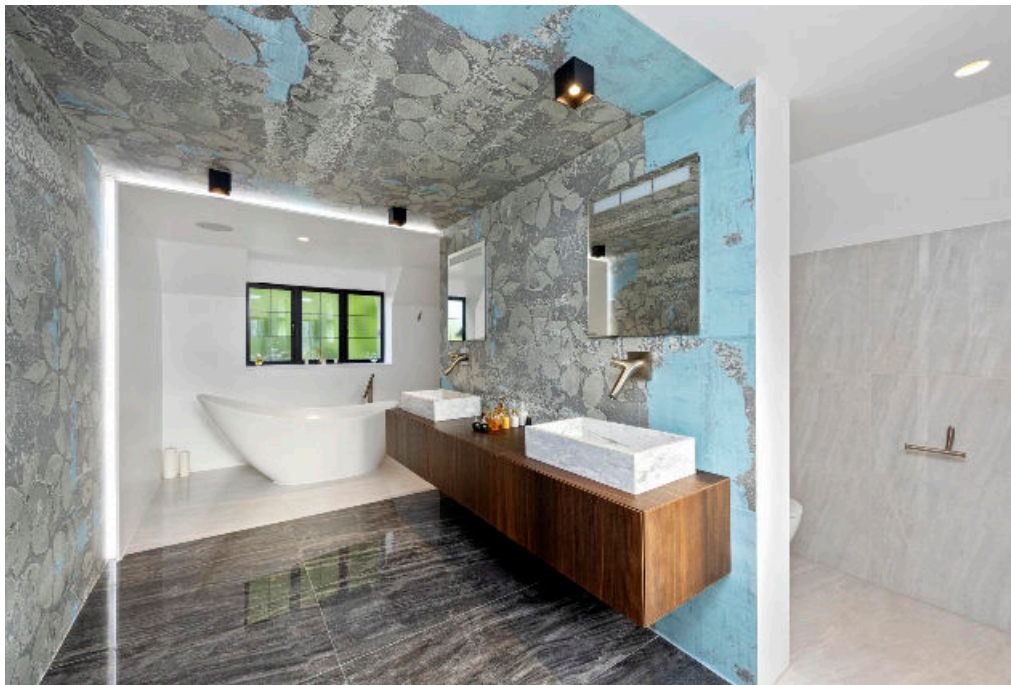
Set on the Surrey Downs, Kingswood is surrounded by open countryside, ideal for walks, cycling and horse riding with liveries and riding schools nearby. The village has local shopping, restaurants, pubs and cafes. Epsom, Reigate and Banstead are close by and offer a wider range of shops, restaurants and cafes, Waitrose supermarket, cinemas and theatres.

Communication links are excellent with Junction 8 of the M25 providing access to Gatwick and Heathrow airports and the coast. The A217 provides a route into London.

The area has a number of excellent schools including Chinthurst, Aberdour, Epsom College, City of London Freemans and Reigate Grammar.

There is a wide choice of leisure pursuits with a number of excellent golf clubs including Walton Heath, Kingswood Golf and Country Club, Woodcote Park, Surrey Downs, Cuddington and Chipstead Golf Clubs. Horse racing can be enjoyed at Epsom Downs (home of The Derby) and Lingfield.









Knight Frank

47 High Street
Esher
Surrey KT10 9RL
knightfrank.co.uk

We would be delighted to tell you more

Adam Burlison
01372 239 984
adam.burlison@knightfrank.com

Maisie Bywater
01372 230466
maisie.bywater@knightfrank.com

Amanda Lamble
01372 460892
amanda.lamble@knightfrank.com



Fixtures and fittings: A list of the fitted carpets, curtains, light fittings and other items fixed to the property which are included in the sale (or may be available by separate negotiation) will be provided by the Seller's Solicitors.

Important Notice: 1. Particulars: These particulars are not an offer or contract, nor part of one. You should not rely on statements by Knight Frank LLP in the particulars or by word of mouth or in writing ("information") as being factually accurate about the property, its condition or its value. Neither Knight Frank LLP nor any joint agent has any authority to make any representations about the property, and accordingly any information given is entirely without responsibility on the part of the agents, seller(s) or lessor(s). 2. Photos, Videos etc: The photographs, property videos and virtual viewings etc. show only certain parts of the property as they appeared at the time they were taken. Areas, measurements and distances given are approximate only. 3. Regulations etc: Any reference to alterations to, or use of, any part of the property does not mean that any necessary planning, building regulations or other consent has been obtained. A buyer or lessee must find out by inspection or in other ways that these matters have been properly dealt with and that all information is correct. 4. VAT: The VAT position relating to the property may change without notice. 5. To find out how we process Personal Data, please refer to our Group Privacy Statement and other notices at <https://www.knightfrank.com/legals/privacy-statement>.

Particulars dated August 2024. Photographs and videos dated August 2024.

Knight Frank is the trading name of Knight Frank LLP. Knight Frank LLP is a limited liability partnership registered in England and Wales with registered number OC305934. Our registered office is at 55 Baker Street, London W1U 8AN where you may look at a list of members' names. If we use the term 'partner' when referring to one of our representatives, that person will either be a member, employee, worker or consultant of Knight Frank LLP and not a partner in a partnership. If you do not want us to contact you further about our services then please contact us by either calling 020 3544 0692, email to marketing.help@knightfrank.com or post to our UK Residential Marketing Manager at our registered office (above) providing your name and address.