



Meadway, Esher

---



# Property For Sale in Esher,

---

A superb family home located in an exclusive gated private road and situated in a plot of 0.88 acres with a south west facing garden. Accommodation extends to approximately 5,500 sq ft and the house sits in a well screened private gardens with a wooded back drop.

Spacious accommodation is set across two floors and offers five bedrooms and three bathrooms, on the ground floor is an impressive entrance hall set around five reception rooms.

Esher high street has a wide range of restaurants and shops including Waitrose, Cote, Giggling Squid, Gail's Bakery, Fego's, The Good Earth and Everyman Cinema along with a number of coffee shops and pubs.

The garden is a real feature of the property with mature shrubs and plants and set around a large terrace and swimming pool. To the front is a large driveway including a triple and double garage.

Tenure: Freehold

Council Tax Band: H

Local Authority: Elmbridge Borough Council



5



3



5



4



EPC

D

Schooling in the area is superb with a large number of private and state schools in the immediate area including Claremont Fan Court, The ACS Cobham International School, Shrewsbury House, Rowan, Esher Church School. Reeds and Danes Hill are also conveniently located.

There is an extensive choice of recreational activities with Sandown Park offering horse racing, skiing, golf, go-karting, gym and squash, the historic Hampton Court Palace, the National Trust owned Claremont Landscaped Gardens all within the town.

Esher town centre - 1.25 miles

Esher train station - 2 miles

Cobham - 3.5 miles

M25 - 4.75 miles

Central London - 20 miles

All distances are approximate.

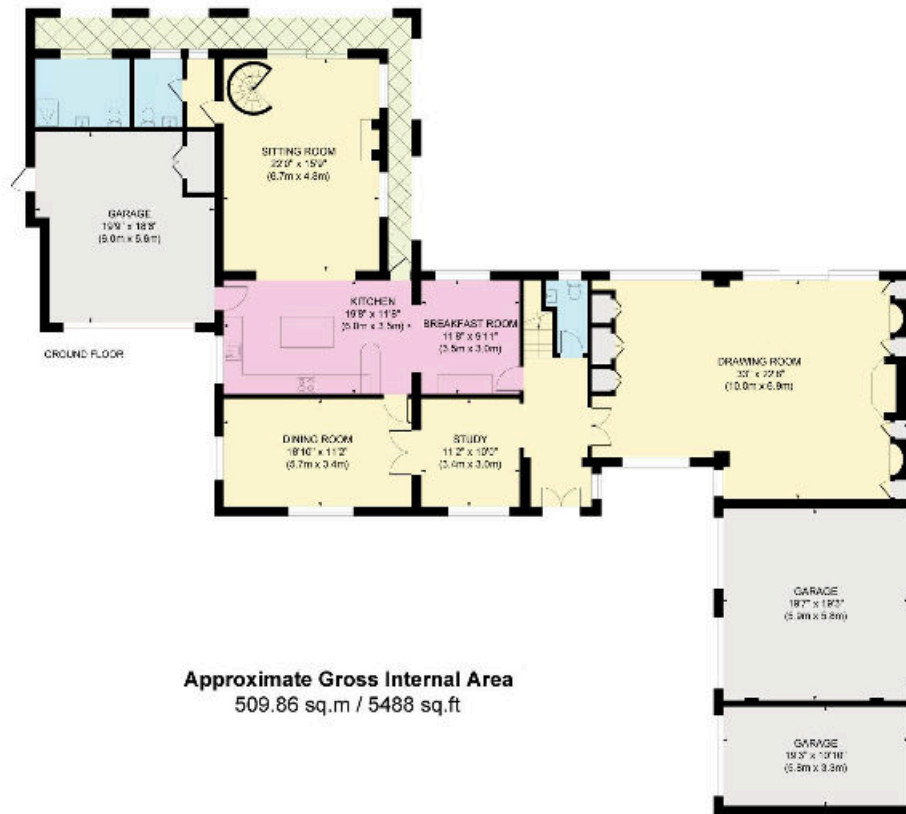
All schools referenced are subject to catchment areas or entry requirements.











Approximate Gross Internal Area  
509.86 sq.m / 5488 sq.ft



Knight Frank

47 High Street

Esher

KT10 9RL

[knightfrank.co.uk](http://knightfrank.co.uk)

We would be delighted to tell you more

Adam Burlison

01372 885661

[adam.burlison@knightfrank.com](mailto:adam.burlison@knightfrank.com)

Maisie Bywater

01372 230466

[maisie.bywater@knightfrank.com](mailto:maisie.bywater@knightfrank.com)



Fixtures and fittings: A list of the fitted carpets, curtains, light fittings and other items fixed to the property which are included in the sale (or may be available by separate negotiation) will be provided by the Seller's Solicitors.

Important Notice: 1. Particulars: These particulars are not an offer or contract, nor part of one. You should not rely on statements by Knight Frank LLP in the particulars or by word of mouth or in writing ("information") as being factually accurate about the property, its condition or its value. Neither Knight Frank LLP nor any joint agent has any authority to make any representations about the property, and accordingly any information given is entirely without responsibility on the part of the agents, seller(s) or lessor(s). 2. Photos, Videos etc: The photographs, property videos and virtual viewings etc. show only certain parts of the property as they appeared at the time they were taken. Areas, measurements and distances given are approximate only. 3. Regulations etc: Any reference to alterations to, or use of, any part of the property does not mean that any necessary planning, building regulations or other consent has been obtained. A buyer or lessee must find out by inspection or in other ways that these matters have been properly dealt with and that all information is correct. 4. VAT: The VAT position relating to the property may change without notice. 5. To find out how we process Personal Data, please refer to our Group Privacy Statement and other notices at <https://www.knightfrank.com/legals/privacy-statement>.

Particulars dated April 2024. Photographs and videos dated April 2024.

Knight Frank is the trading name of Knight Frank LLP. Knight Frank LLP is a limited liability partnership registered in England and Wales with registered number OC305934. Our registered office is at 55 Baker Street, London W1U 8AN where you may look at a list of members' names. If we use the term 'partner' when referring to one of our representatives, that person will either be a member, employee, worker or consultant of Knight Frank LLP and not a partner in a partnership. If you do not want us to contact you further about our services then please contact us by either calling 020 3544 0692, email to [marketing.help@knightfrank.com](mailto:marketing.help@knightfrank.com) or post to our UK Residential Marketing Manager at our registered office (above) providing your name and address.