

High View, 37 More Lane, Esher





A duplex apartment with a landscaped private garden.

A stunning duplex apartment ideally located for both Esher high street and Station.

The apartment is a stylish and luxurious apartment with two bedrooms , two bathrooms, study and a large open plan kitchen/dining/reception room.

The specification includes underfloor heating, LED lighting, oak flooring to the entrance hall, dining and reception areas. The kitchen has a range of integrated Miele appliances including two double ovens, Nespresso coffee machine, and a microwave/combination as well as a wine fridge and a large fridge freezer, Quooker boiling tap, and filtered water tap.



Tenure: Share of freehold plus leasehold, approximately 112 years remaining

Service charge: £4,340

Ground rent: None collected

Local authority: Elmbridge Borough Council

Council tax band: G

Outside a paved verandah flows along the back of the property with the exquisite landscaped south-west facing garden beyond. A raised area of decking at the far end of the garden provides the perfect alternative seating or entertaining area. The garden further benefits from app-controlled night-time lighting.

The apartment has two tandem parking spaces and an EV charging point.

Esher high street has a wide range of restaurants and shops including Waitrose, Giggling Squid, The Good Earth an Everyman Cinema along with a number of coffee shops and pubs.

Communication links are excellent, with the station providing a fast and frequent service to London Waterloo. The A3 provides direct access to central London, the M25 and the South.











Esher Town Centre - 0.5 miles

Esher Station - 1.25 miles

Cobham - 4 miles

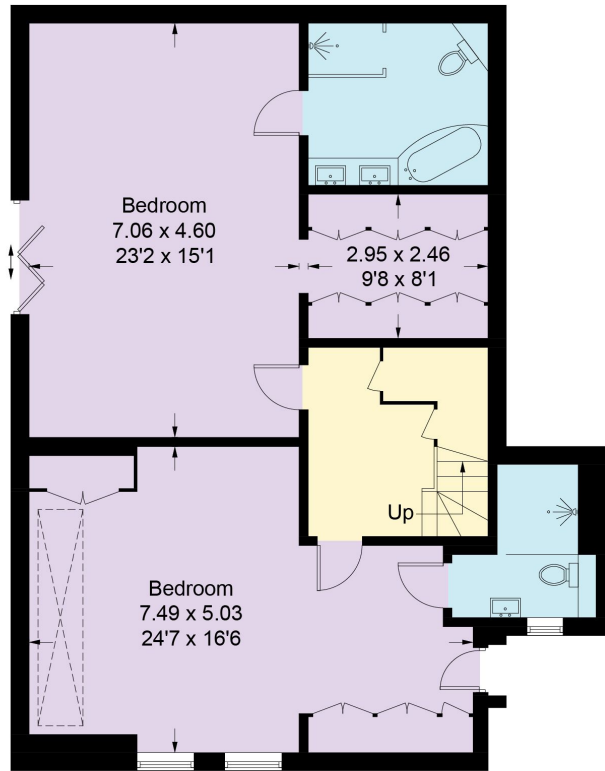
Kingston - 4.5 miles

Central London - 20 miles

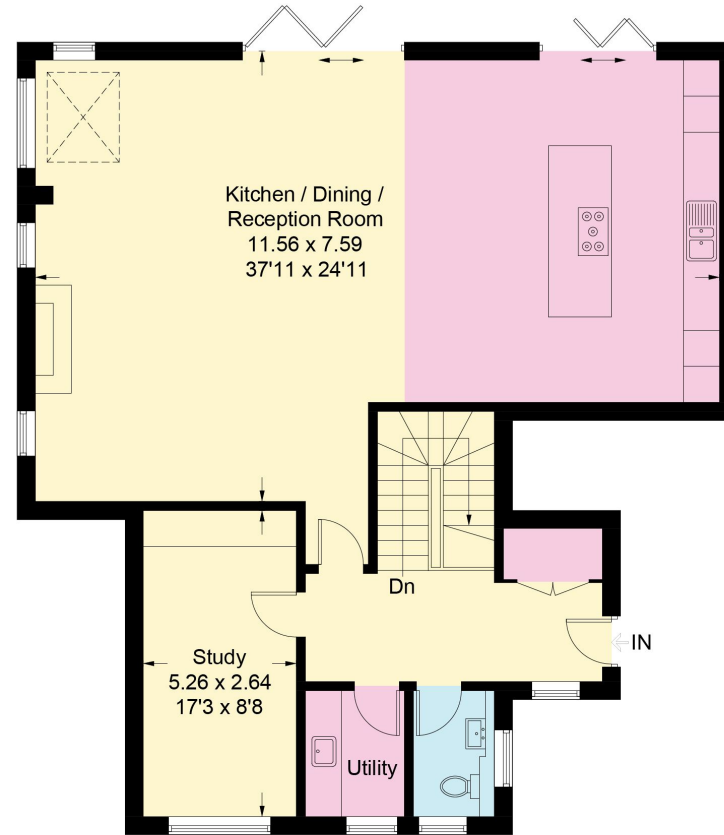


More Lane, KT10

Approximate Gross Internal Area = 217.8 sq m / 2345 sq ft



Lower Ground Floor



Ground Floor

Knight Frank

Esher

47 High Street

Esher

KT10 9RL

[knightfrank.co.uk](https://www.knightfrank.co.uk)

We would be delighted to tell you more

Adam Burlison

01372 464496

adam.burlison@knightfrank.com

George Pratt

01372 464496

george.pratt@knightfrank.com



Fixtures and fittings: A list of the fitted carpets, curtains, light fittings and other items fixed to the property which are included in the sale (or may be available by separate negotiation) will be provided by the Seller's Solicitors.

Important Notice: 1. Particulars: These particulars are not an offer or contract, nor part of one. You should not rely on statements by Knight Frank LLP in the particulars or by word of mouth or in writing ("information") as being factually accurate about the property, its condition or its value. Neither Knight Frank LLP nor any joint agent has any authority to make any representations about the property, and accordingly any information given is entirely without responsibility on the part of the agents, seller(s) or lessor(s). 2. Photos, Videos etc: The photographs, property videos and virtual viewings etc. show only certain parts of the property as they appeared at the time they were taken. Areas, measurements and distances given are approximate only. 3. Regulations etc: Any reference to alterations to, or use of, any part of the property does not mean that any necessary planning, building regulations or other consent has been obtained. A buyer or lessee must find out by inspection or in other ways that these matters have been properly dealt with and that all information is correct. 4. VAT: The VAT position relating to the property may change without notice. 5. To find out how we process Personal Data, please refer to our Group Privacy Statement and other notices at <https://www.knightfrank.com/legals/privacy-statement>.

Particulars dated May 2023. Photographs and videos dated May 2023.

All information is correct at the time of going to print. Knight Frank is the trading name of Knight Frank LLP. Knight Frank LLP is a limited liability partnership registered in England and Wales with registered number OC305934. Our registered office is at 55 Baker Street, London W1U 8AN. We use the term 'partner' to refer to a member of Knight Frank LLP, or an employee or consultant. A list of members names of Knight Frank LLP may be inspected at our registered office. If you do not want us to contact you further about our services then please contact us by either calling 020 3544 0692, email to marketing.help@knightfrank.com or post to our UK Residential Marketing Manager at our registered office (above) providing your name and address.