






WILLOW VIEW, 35 HIGH ROAD

Ashton Keynes, Swindon, Wiltshire, SN6



WILLOW VIEW, 35 HIGH ROAD, ASHTON KEYNES

An attractive modern Cotswold stone property, which has been cleverly extended to create an excellent space, set in the heart of this popular village with pretty private gardens, plenty of parking and garaging.

			EPC
4	2	3-4	D

Local Authority: Wiltshire Council
Council Tax band: F
Tenure: Freehold

Guide Price: £870,000



THE PROPERTY

Willow View is a beautiful and charmingly presented four bedroom detached Cotswold stone property built approximately ten years ago. Which has been largely improved and extended by the present owner. Situated at the heart of this well-served village and strong community, the property has a spacious hallway and the addition of an elegant hall from which all the principal rooms run. The kitchen offers an excellent family space with access to a new addition to the property: a wonderful, impressive garden room with a wood burner that opens on to a terrace and the private gardens. The property offers highly versatile and energy-efficient accommodation to fit various lifestyles.

Services:
Mains electricity, water and drainage. Air source heat pump with underfloor heating installed throughout.





SITUATION

Ashton Keynes has a village pub, active village and community social events, and various clubs, including a jazz festival, fireworks night, village fete, and duck race. Ashton Keynes village shop, doctors' surgery, active village hall, sports clubs, and societies are also available. Cirencester has a wide range of shops and services. Additional shopping at Cheltenham, Oxford, Swindon, Bath, and Bristol. Local schools include Ashton Keynes Primary and Preschool. Deer Park, Kingshill, Cirencester, Farmers Fairford. Cheltenham College, Cheltenham Ladies College, St Edwards, Rendcomb College. There is easy access to M4 Wootten Bassett Junction 6 M4/M5 interchange at Bristol. Kemble station is 5.8 miles, and Swindon is 13.3 miles (London Paddington 65 minutes). Excellent walking and riding on the extensive network of footpaths and bridleways in the local area. Various sports clubs are available for adults and children within the village. Water sports at Cotswold Water Park. Racing at Newbury, Cheltenham and Bath. Eventing, polo and hunting locally.

Distances:
 Kemble station 5.8 miles | Cirencester 8.7 miles | Swindon 13.3 miles (London Paddington 65 minutes) | Cheltenham 22.5 miles. All distances and times are approximate.





GARDENS AND GROUNDS

Accessed through a private gravelled driveway, there is a large amount of parking, including space for a campervan and a double garage. An established beech hedge encloses the south-facing gardens. The gardens, mainly laid to lawn, are secluded and beautifully landscaped, and there is a wide variety of mature plants and trees with herbaceous borders. Additionally, there is a seating area, terrace areas to the rear and front.

Directions:
Postcode SN6 6NX
What3Words: ///refilled.daydream.ignore



Willow View

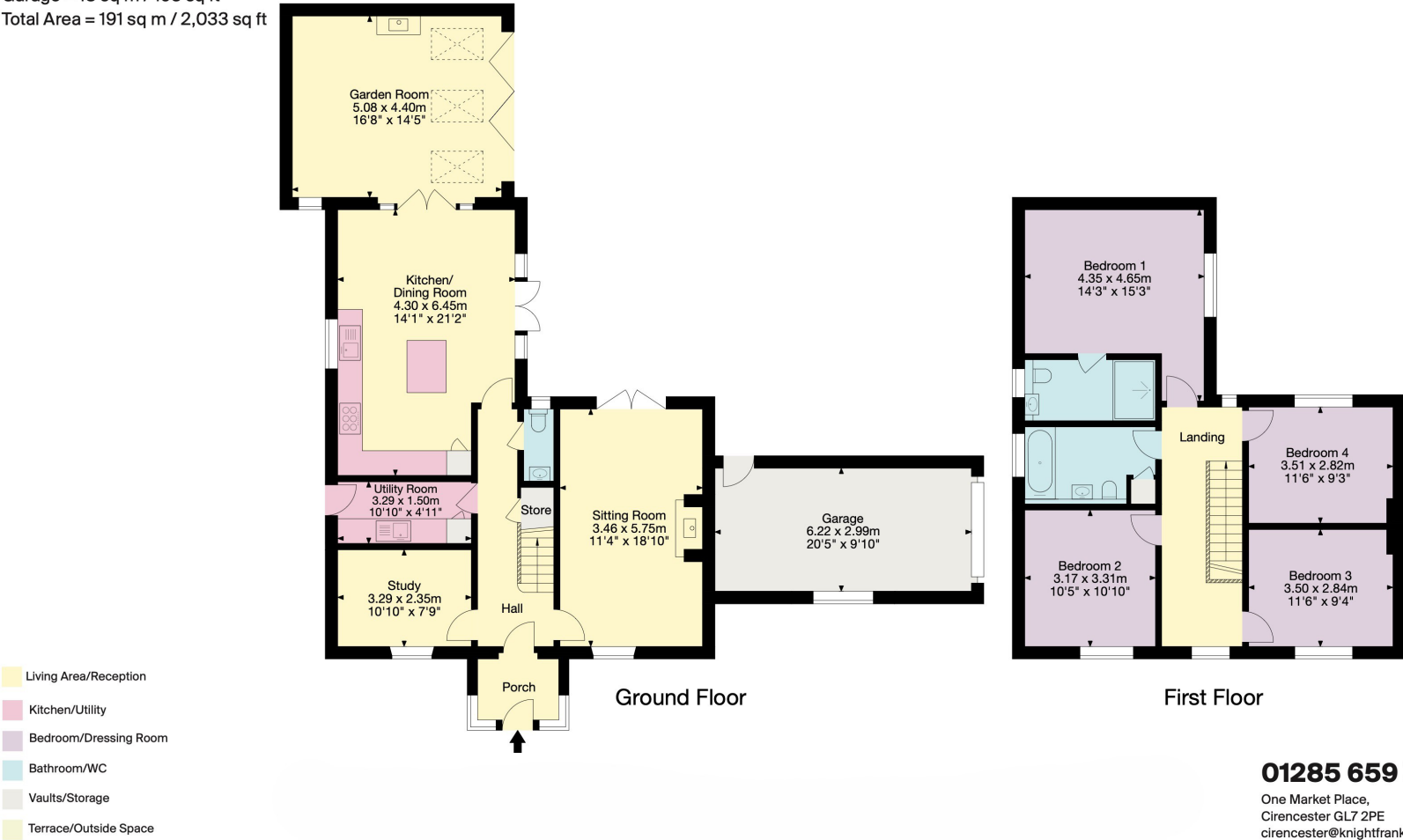
Ashton Keynes, Swindon

Gross Internal Area (Approx.)

Main House = 171 sq m / 1,840 sq ft

Garage = 18 sq m / 193 sq ft

Total Area = 191 sq m / 2,033 sq ft



This plan is for layout guidance only. Not drawn to scale unless stated. Windows and door openings are approximate. Whilst every care is taken in the preparation of this plan, please check all dimensions, shapes and compass bearings before making any decisions reliant upon them. (ID767266)



Georgina Mason

01285 659771

georgina.mason@knightfrank.com

Knight Frank Cirencester

One Market Place

GL7 2PE

knightfrank.co.uk

Your partners in property

1. Particulars: These particulars are not an offer or contract, nor part of one. You should not rely on statements given by Knight Frank in the particulars, by word of mouth or in writing ("information") as being factually accurate about the property, its condition or its value. Neither Knight Frank nor any joint agent has any authority to make any representations about the property, and accordingly any information given is entirely without responsibility on the part of Knight Frank. 2. Material Information: Please note that the material information is provided to Knight Frank by third parties and is provided here as a guide only. While Knight Frank has taken steps to verify this information, we advise you to confirm the details of any such material information prior to any offer being submitted. If we are informed of changes to this information by the seller or another third party, we will use reasonable endeavours to update this as soon as practical. 3. Photos, Videos etc: The photographs, property videos and virtual viewings etc. show only certain parts of the property as they appeared at the time they were taken. Areas, measurements and distances given are approximate only. 4. Regulations etc: Any reference to alterations to, or use of, any part of the property does not mean that any necessary planning, building regulations or other consent has been obtained. A buyer must find out by inspection or in other ways that these matters have been properly dealt with and that all information is correct. 5. Fixtures and fittings: A list of the fitted carpets, curtains, light fittings and other items fixed to the property which are included in the sale (or may be available by separate negotiation) will be provided by the Seller's Solicitors. 6. VAT: The VAT position relating to the property may change without notice. 7. To find out how we process Personal Data, please refer to our Group Privacy Statement and other notices at <https://www.knightfrank.com/legals/privacy-statement>.
Particulars dated July 2025. Photographs and videos dated July 2025. All information is correct at the time of going to print. Knight Frank is the trading name of Knight Frank LLP. Knight Frank LLP is a limited liability partnership registered in England and Wales with registered number OC305934. Our registered office is at 55 Baker Street, London W1U 8AN. We use the term 'partner' to refer to a member of Knight Frank LLP or an employee or consultant. A list of members names of Knight Frank LLP may be inspected at our registered office. If you do not want us to contact you further about our services then please contact us by either calling 020 3544 0692, email to marketing.help@knightfrank.com or post to our UK Residential Marketing Manager at our registered office (above) providing your name and address.

