

Godwins Farm House

Rodbourne, Malmesbury, Wiltshire





A stunning period farmhouse set in a beautifully landscaped garden surrounded by open countryside, in the peaceful village of Rodbourne just outside Malmesbury.

Malmesbury 3.2 miles, Tetbury 8.7 miles, Chippenham Station 8.3 Miles (69 minutes to London Paddington)
Kemble Station 10.5 miles (74 minutes to London Paddington), Cirencester 14.8 miles, Bath 24.6 miles, Bristol 27.3 miles, Heathrow 87.5 miles
(All distances are approximate)


6


4


3

Summary of accommodation

Ground floor: Entrance hall | Kitchen/breakfast room | Drawing room | Dining room | Sitting room | Utility room | WC
Bedroom with en suite bath and shower room | Bedroom | Shower room

First floor: Principal bedroom with en suite bathroom | Two further bedrooms | Family bath and shower room

Second floor: Further bedroom


Garden and Grounds


Agricultural Barn with Class Q planning permission for a four-bed dwelling | Party Barn
Planning for a triple garage | Mature garden and grounds including a Potager | Paddock


In all about 4.15 acres


Situation


Times and distances are approximate.


 Kemble - London Paddington from 70 mins, Chippenham Station for Bristol Temple Meads (from 25 mins and Paddington from 70 mins.)


 M4 Jct 17 at Chippenham (8 miles).


 Lea and Garsdon CE Primary School, Charlton Primary School, Malmesbury and Chippenham secondary schools. Westonbirt, Beaudesert, Rendcomb, Cheltenham College and Cheltenham Ladies College.

 Excellent walking and cycling, riding on the extensive network of footpaths, roads and bridleways across the region.

 Bath and Gloucester. Local clubs: Tetbury, Minety and Chippenham.

 Racing at Cheltenham, Newbury and Bath. Eventing, polo and hunting in the locality.

 Bowood, Castle Coombe, Oaksey and Minchinhampton.

 Cotswold Water Park.



The Property

Godwins Farm House is a truly stunning Cotswold stone residence with the recent edition of an east wing, echoing the original barn of the farmstead. The accommodation is highly versatile and spacious and situated in the desirable village of Rodbourne. The house is approached through the village down a quiet lane via a gated gravelled drive with generous parking.

The farmhouse is arranged over three floors and underwent significant renovation and redesign by the owners.

The exceptional east wing, creates a fabulous interior-designed finish to this beautiful country house.

Having retained so much of its period character, the addition of a more contemporary space beautifully compliments each part of the property.









Gardens and Grounds

Godwins Farm House has beautifully private landscaped gardens, designed by an RHS gold medallist, surrounding the property. An impressively large terrace to the rear of the house and a restored Dutch Barn, now a party barn with a decked area and a boulé court, are ideal for outside entertaining.

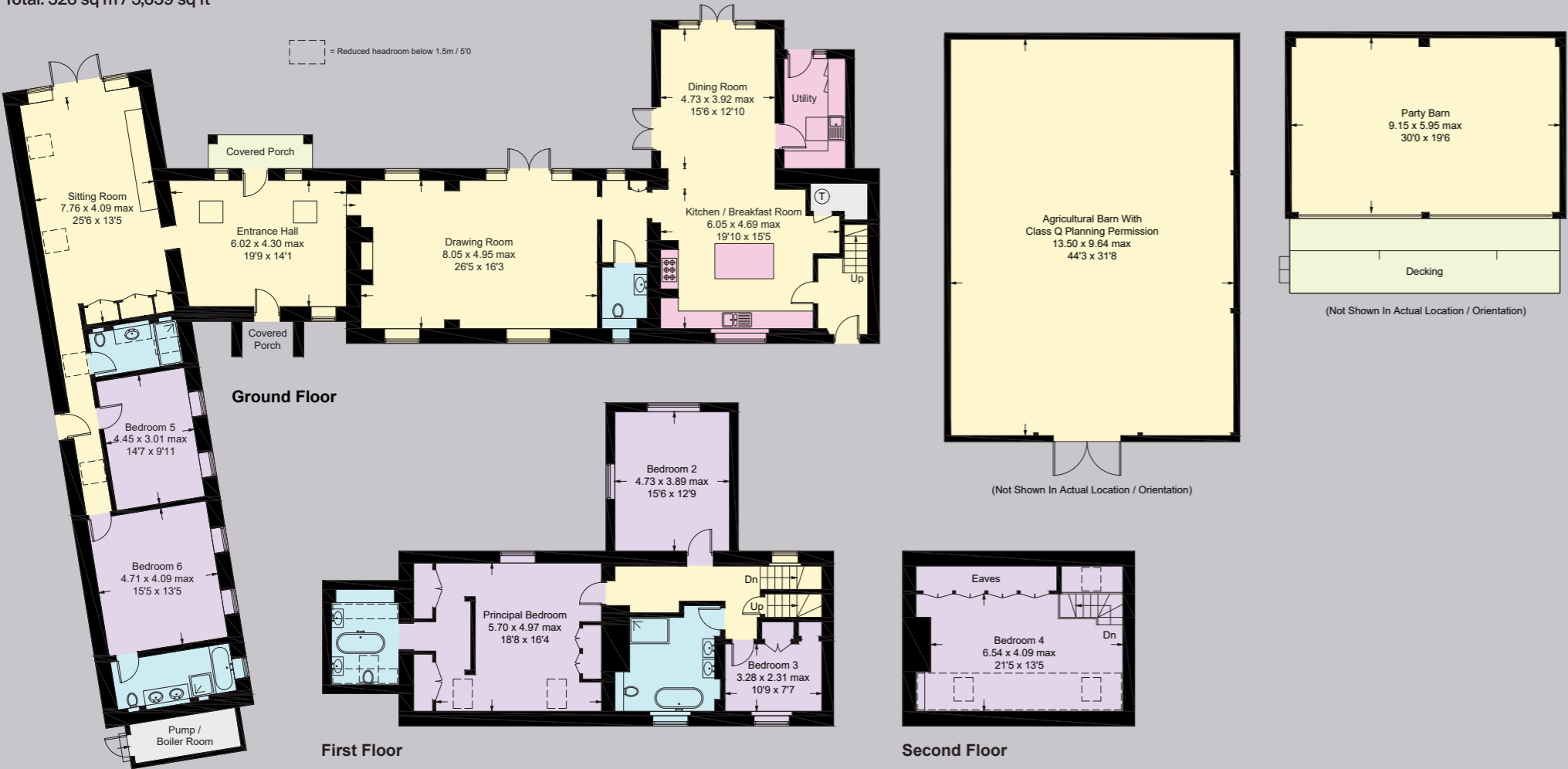
There is ample parking for numerous vehicles and there is planning for a triple garage. Adjoining Godwins Farm House is a large paddock that provides excellent grazing.

Further to this, there is an agricultural barn with Class Q planning permission for a separate four bedroom residential dwelling; it currently provides extra storage or can be utilised for storing vehicles.



FLOOR PLAN

Approximate Gross Internal Floor Area
Main House: 336 sq m / 3,620 sq ft
Barns: 185 sq m / 1,987 sq ft
Pump/Boiler Room: 5 sq m / 52 sq ft
Total: 526 sq m / 5,659 sq ft



This plan is for guidance only and must not be relied upon as a statement of fact. Attention is drawn to the important notice on the last page of the text of the Particulars.

PROPERTY INFORMATION

Property Information

Services:

Mains water and electricity. Private drainage. Air source heat pumps providing heating and hot water. Hyper fast full fiber broadband available.

Tenure:

Freehold

Local Authority:

Wiltshire Council

Council Tax:

Band E

EPC:

C

Postcode:

SN16 0EY

What3Words:

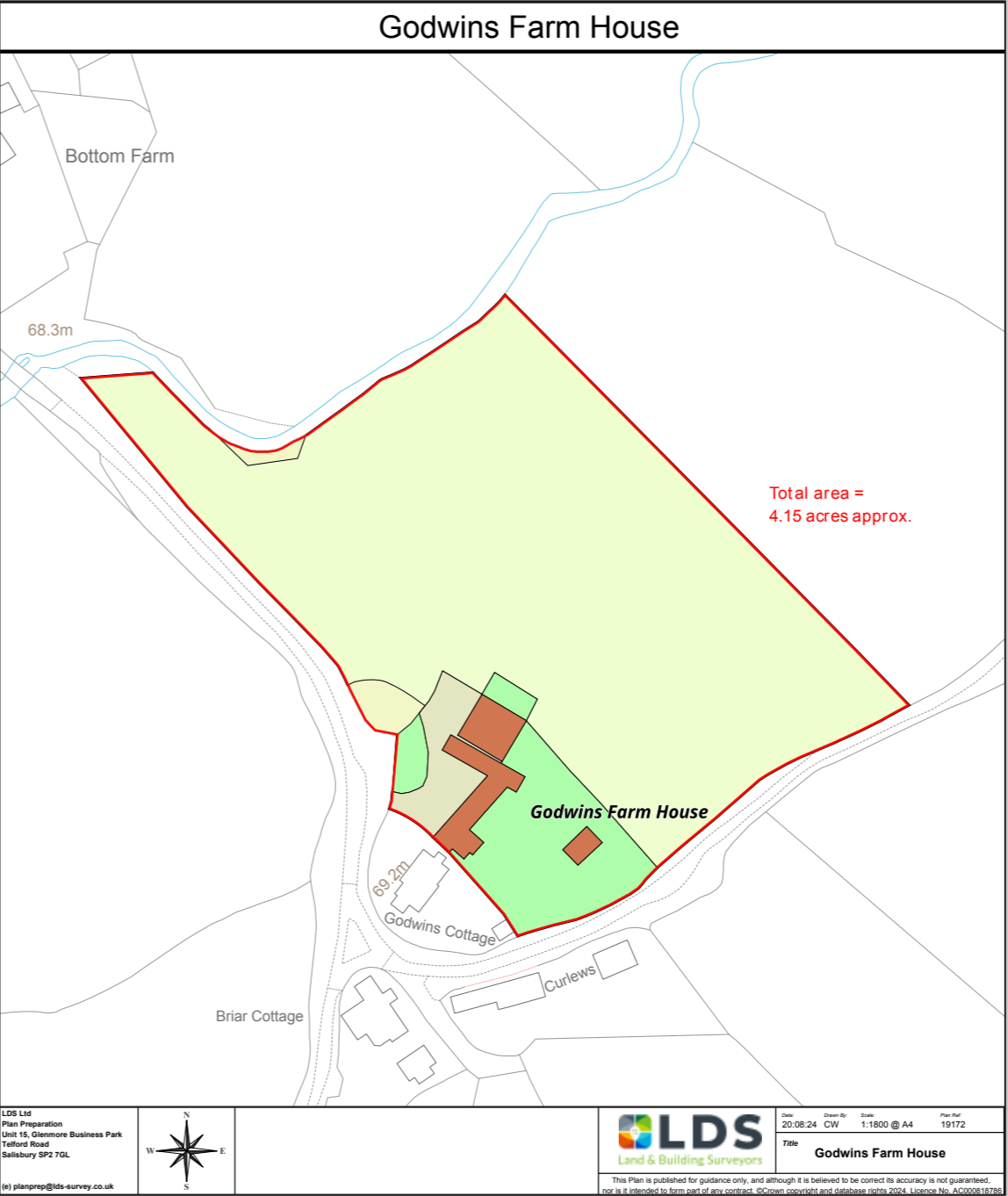
///erupted.activates.skid

Guide Price:

£1,750,000

Viewings:

All viewings strictly by appointment only through the vendor's sole selling agents, Knight Frank LLP.





Cirencester
One Market Place
Cirencester, Gloucestershire
GL7 2PE

Georgina Mason
01285 882 004
georgina.mason@knightfrank.com

knightfrank.co.uk

Fixtures and fittings: A list of the fitted carpets, curtains, light fittings and other items fixed to the property which are included in the sale (or may be available by separate negotiation) will be provided by the Seller's Solicitors.

Important Notice: 1. Particulars: These particulars are not an offer or contract, nor part of one. You should not rely on statements by Knight Frank LLP in the particulars or by word of mouth or in writing ("information") as being factually accurate about the property, its condition or its value. Neither Knight Frank LLP nor any joint agent has any authority to make any representations about the property, and accordingly any information given is entirely without responsibility on the part of the agents, seller(s) or lessor(s). 2. Photos, Videos etc: The photographs, property videos and virtual viewings etc. show only certain parts of the property as they appeared at the time they were taken. Areas, measurements and distances given are approximate only. 3. Regulations etc: Any reference to alterations to, or use of, any part of the property does not mean that any necessary planning, building regulations or other consent has been obtained. A buyer or lessee must find out by inspection or in other ways that these matters have been properly dealt with and that all information is correct. 4. VAT: The VAT position relating to the property may change without notice. 5. To find out how we process Personal Data, please refer to our Group Privacy Statement and other notices at <https://www.knightfrank.com/legals/privacy-statement>.

Particulars dated: August 2024. Photographs dated: August 2024. Capture Property 01225 667287.

All information is correct at the time of going to print. Knight Frank is the trading name of Knight Frank LLP. Knight Frank LLP is a limited liability partnership registered in England and Wales with registered number OC305934. Our registered office is at 55 Baker Street, London W1U 8AN. We use the term 'partner' to refer to a member of Knight Frank LLP, or an employee or consultant. A list of members names of Knight Frank LLP may be inspected at our registered office. If you do not want us to contact you further about our services then please contact us by either calling 020 3544 0692, email to marketing.help@knightfrank.com or post to our UK Residential Marketing Manager at our registered office (above) providing your name and address.