



152 HEWLETT ROAD, CHELTENHAM






GL52 6TT





# A FABULOUS TOWNHOUSE

Hewlett Road is a stylish townhouse near Battledown and Pittville, offering over 3,000 sq. ft. of versatile space, including a self-contained lower ground apartment, upgraded interiors, and off-street parking.

			EPC
4	2	2	D
			

Local Authority: Cheltenham Borough Council  
Council Tax band: D  
Tenure: Freehold

Guide Price: £1,050,000



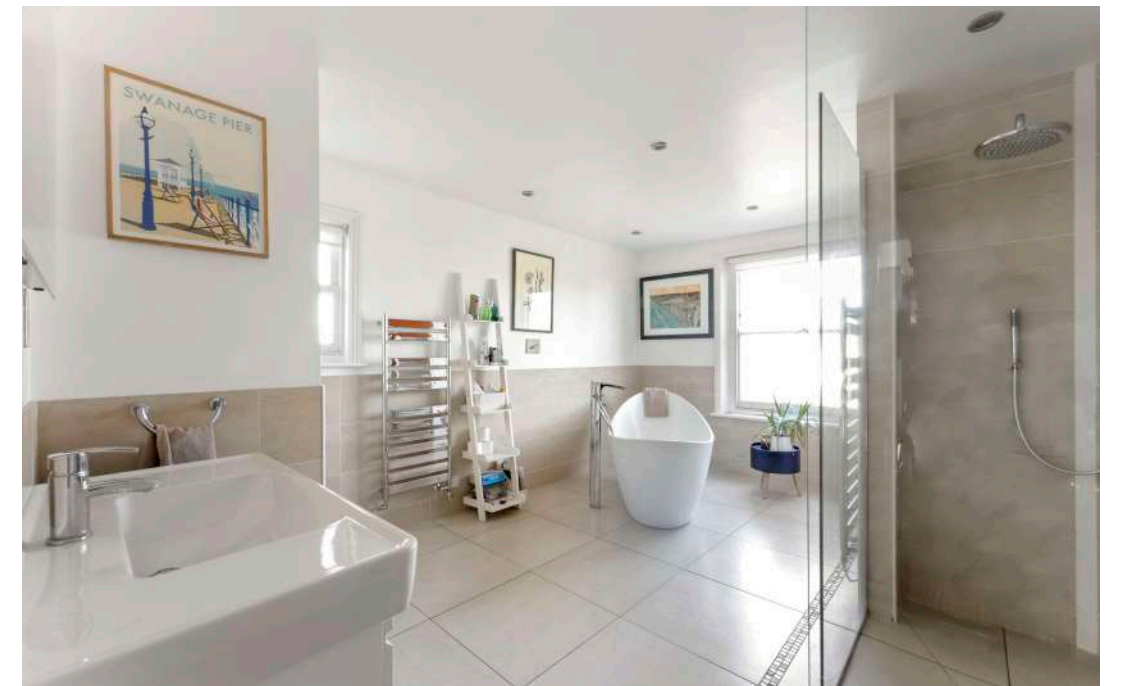
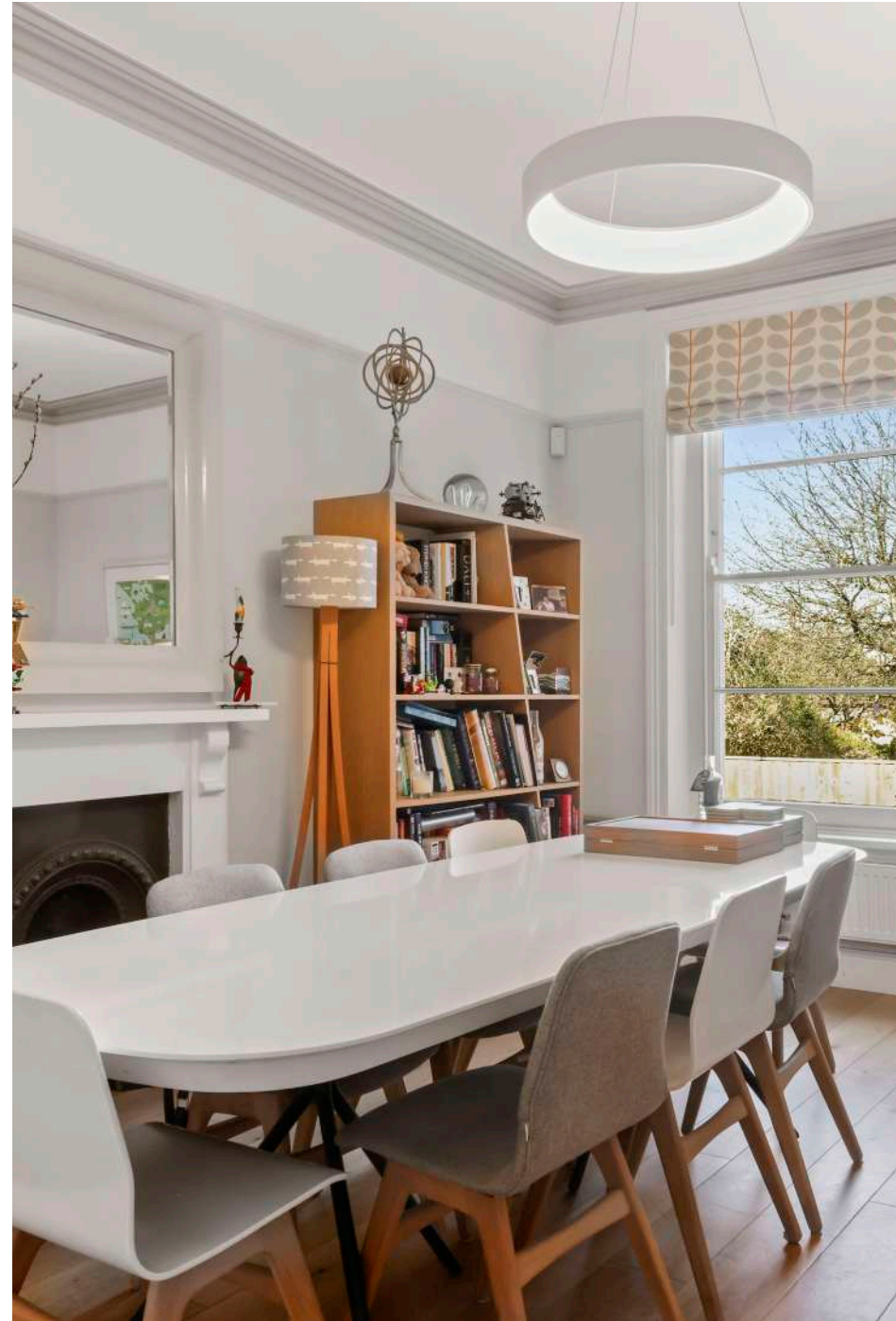


## 152 HEWLETT ROAD

This spacious and versatile home opens into a welcoming hall leading to two large reception rooms and a stylish kitchen/breakfast room with a modern extension and bi-fold doors to the garden. The bespoke kitchen includes integrated appliances and access to a generous utility room. Upstairs, there are five bedrooms across two floors, including a guest suite with en suite and ample storage. The family bathroom features both a bath and separate shower. The lower ground floor houses a self-contained one-bedroom apartment with its own kitchen, sitting room, and shower room—ideal for guests or rental use.

Outside, the rear garden includes a raised terrace, level lawn, mature planting, a workshop, and side access. Off-street parking is available at the front.

Hewlet Road is close to Cheltenham town centre, with excellent access to Oxford and London. The area offers top schools, theatres, festivals, independent shops, and green spaces like Pittville Park, plus nearby Cheltenham Lido and Hospital.







Approx. gross internal area 2562 Sq Ft. / 238.0 Sq M.  
Approx. gross internal area 3058 Sq Ft. / 284.1 Sq M. Inc. Restricted Height



This plan is for layout guidance only. Not drawn to scale unless stated. Windows and door openings are approximate. Whilst every care is taken in the preparation of this plan, please check all dimensions, shapes and compass bearings before making any decisions reliant upon them. (ID767266)



We would be delighted  
to tell you more.

Harry Bethell  
01242 246959  
harry.bethell@knightfrank.com

**Knight Frank**  
123 Promenade, Cheltenham  
GL50 1NW

**knightfrank.co.uk**

Your partners in property

1. Particulars: These particulars are not an offer or contract, nor part of one. You should not rely on statements given by Knight Frank in the particulars, by word of mouth or in writing ("information") as being factually accurate about the property, its condition or its value. Neither Knight Frank nor any joint agent has any authority to make any representations about the property, and accordingly any information given is entirely without responsibility on the part of Knight Frank. 2. Material Information: Please note that the material information is provided to Knight Frank by third parties and is provided here as a guide only. While Knight Frank has taken steps to verify this information, we advise you to confirm the details of any such material information prior to any offer being submitted. If we are informed of changes to this information by the seller or another third party, we will use reasonable endeavours to update this as soon as practical. 3. Photos, Videos etc: The photographs, property videos and virtual viewings etc. show only certain parts of the property as they appeared at the time they were taken. Areas, measurements and distances given are approximate only. 4. Regulations etc: Any reference to alterations to, or use of, any part of the property does not mean that any necessary planning, building regulations or other consent has been obtained. A buyer must find out by inspection or in other ways that these matters have been properly dealt with and that all information is correct. 5. Fixtures and fittings: A list of the fitted carpets, curtains, light fittings and other items fixed to the property which are included in the sale (or may be available by separate negotiation) will be provided by the Seller's Solicitors. 6. VAT: The VAT position relating to the property may change without notice. 7. To find out how we process Personal Data, please refer to our Group Privacy Statement and other notices at <https://www.knightfrank.com/legals/privacy-statement>.

Particulars dated April 2025. Photographs and videos dated April 2025. All information is correct at the time of going to print. Knight Frank is the trading name of Knight Frank LLP. Knight Frank LLP is a limited liability partnership registered in England and Wales with registered number OC305934. Our registered office is at 55 Baker Street, London W1U 8AN. We use the term 'partner' to refer to a member of Knight Frank LLP, or an employee or consultant. A list of members names of Knight Frank LLP may be inspected at our registered office. If you do not want us to contact you further about our services then please contact us by either calling 020 3544 0692, email to [marketing.help@knightfrank.com](mailto:marketing.help@knightfrank.com) or post to our UK Residential Marketing Manager at our registered office (above) providing your name and address.