



SUFFOLK PARADE

Cheltenham GL50 2AE



23 SUFFOLK PARADE CHELTENHAM

A delightful four double bedroom terraced town house in the bohemian district of the Suffolks close to Montpellier and the centre of Cheltenham



4



3



2-3

EPC

C

Local Authority: Cheltenham Borough Council

Council Tax band: D

Tenure: Freehold

Guide price: £865,000



KITCHEN

This thoughtfully renovated and extended home has beautifully appointed accommodation throughout, blending modern touches with period detailing to create a flexible home situated in a fabulous location.

At ground floor level there is a cosy sitting room with bay window and exposed brick chimney breast. The exposed brick continues as a theme in to the rear of the house where an open plan kitchen, dining, family room forms the heart of the house. The kitchen is fitted with a range of modern cabinets with integrated appliances all arranged in a 'U' shape creating a breakfast bar for sociable dining.

To the far end of the kitchen there is ample space for a dining table and bi-fold doors open to the courtyard garden.





LIVING

There is also a sitting area within the kitchen with a pretty fireplace as a focal point.

A short flight of stairs leads down to the study/snug/playroom. This versatile space has a window to the front and a walk in storage cupboard.





BEDROOMS

The upper floors of the house are made up of several half landings which create a lovely feeling of space and privacy. There are four double bedrooms, one with ensuite shower room and vaulted ceiling. The other bedrooms are served by a shower room on the upper mezzanine and a large family bathroom with freestanding clawfoot bath, twin basin and separate shower enclosure.

OUTSIDE

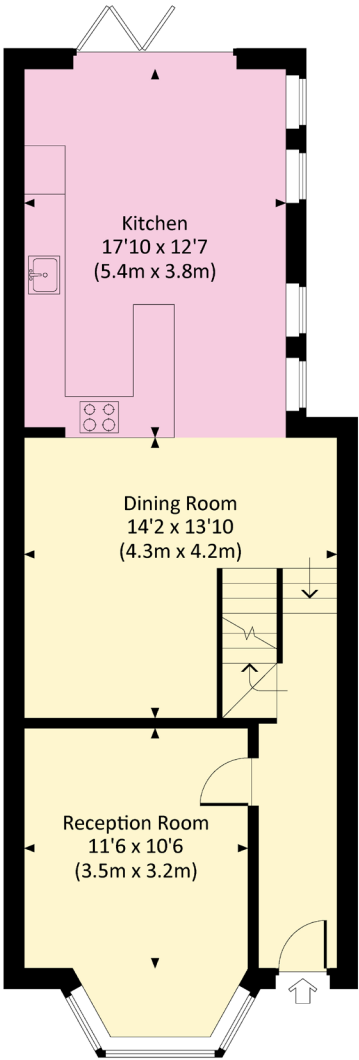
The courtyard garden to the rear has a decorative tiled floor and is flanked by brick boundary walls. There is a small shelter/store to the rear and gated pedestrian access to the access lane.



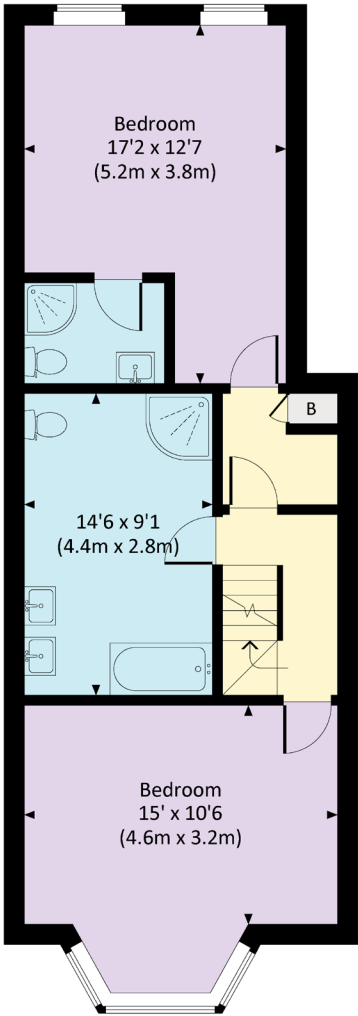


SUFFOLK PARADE, GL50

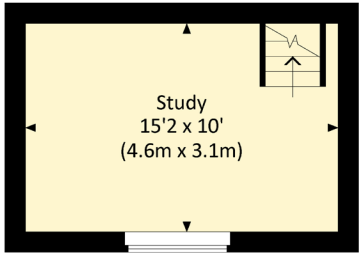
Approx. gross internal area
1787 Sq Ft. / 166.0 Sq M.



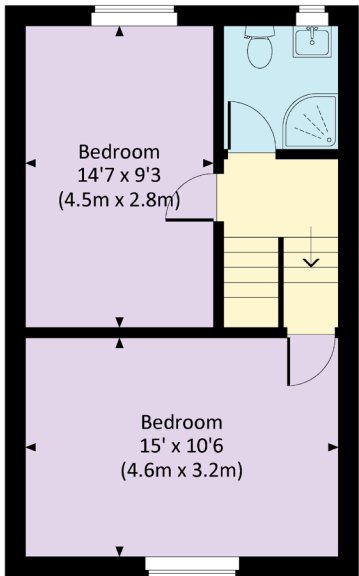
GROUND FLOOR



FIRST FLOOR



LOWER GROUND FLOOR



SECOND FLOOR

(Including Basement / Loft Room)
Approximate Gross Internal Area = 166 sq m / 1787 sq ft

This plan is for layout guidance only. Not drawn to scale unless stated. Windows and door openings are approximate. Whilst every care is taken in the preparation of this plan, please check all dimensions, shapes and compass bearings before making any decisions reliant upon them. (ID767266)

We would be delighted
to tell you more.

Nick Chivers

01242 246959

nick.chivers@knightfrank.com

Knight Frank Cheltenham

123 Promenade

Cheltenham GL50 1NW

[knightfrank.co.uk](https://www.knightfrank.co.uk)

Your partners in property

1. Particulars: These particulars are not an offer or contract, nor part of one. You should not rely on statements given by Knight Frank in the particulars, by word of mouth or in writing ("information") as being factually accurate about the property, its condition or its value. Neither Knight Frank nor any joint agent has any authority to make any representations about the property, and accordingly any information given is entirely without responsibility on the part of Knight Frank. 2. Material Information: Please note that the material information is provided to Knight Frank by third parties and is provided here as a guide only. While Knight Frank has taken steps to verify this information, we advise you to confirm the details of any such material information prior to any offer being submitted. If we are informed of changes to this information by the seller or another third party, we will use reasonable endeavours to update this as soon as practical. 3. Photos, Videos etc: The photographs, property videos and virtual viewings etc. show only certain parts of the property as they appeared at the time they were taken. Areas, measurements and distances given are approximate only. 4. Regulations etc: Any reference to alterations to, or use of, any part of the property does not mean that any necessary planning, building regulations or other consent has been obtained. A buyer must find out by inspection or in other ways that these matters have been properly dealt with and that all information is correct. 5. Fixtures and fittings: A list of the fitted carpets, curtains, light fittings and other items fixed to the property which are included in the sale (or may be available by separate negotiation) will be provided by the Seller's Solicitors. 6. VAT: The VAT position relating to the property may change without notice. 7. To find out how we process Personal Data, please refer to our Group Privacy Statement and other notices at <https://www.knightfrank.com/legals/privacy-statement>.

Particulars dated May 2024. Photographs and videos dated March 2024. All information is correct at the time of going to print. Knight Frank is the trading name of Knight Frank LLP. Knight Frank LLP is a limited liability partnership registered in England and Wales with registered number OC305934. Our registered office is at 55 Baker Street, London W1U 8AN. We use the term 'partner' to refer to a member of Knight Frank LLP, or an employee or consultant. A list of members names of Knight Frank LLP may be inspected at our registered office. If you do not want us to contact you further about our services then please contact us by either calling 020 3544 0692, email to marketing.help@knightfrank.com or post to our UK Residential Marketing Manager at our registered office (above) providing your name and address.