










10 SANDYWELL PARK, CHELTENHAM

GL54 4HF



MAGNIFICENT RESIDENCE WITHIN A GRADE II LISTED MANSION

Sandywell Park is a Grade II listed Cotswold mansion (c.1704) set in 6 acres, with a pool, tennis court, a clock tower garden, and parking, all within an Area of Outstanding Natural Beauty.

			EPC
3	2	1	A
			

Local Authority: Cotswold District Council
Council Tax band: E
Tenure: Freehold
Service charge per annum: £6,456.40

Guide price - £525,000



10 SANDYWELL PARK, CHELTENHAM

The apartment, which has been recently renovated, is situated over part of the first and second floor of this imposing mansion house and is accessed via an impressive communal entrance hall. The kitchen/dining room is beautifully light and spacious with four sash windows. The modern kitchen offers plenty of worktop space and storage, with a central island and large dining area. Integrated NEFF appliances include a double oven, microwave, warming drawer and dishwasher plus there is an American style fridge freezer. A cloakroom and storage cupboard complete the accommodation on this floor.





LIVING

The apartment has the most beautiful period features throughout. The striking drawing room has an open working fire place with two floor to ceiling sash windows and working shutters. It overlooks the delightful parkland grounds with views to the imposing tree-lined avenue. The third bedroom is situated off the drawing room and offers similar views. This room can also be used as a study.



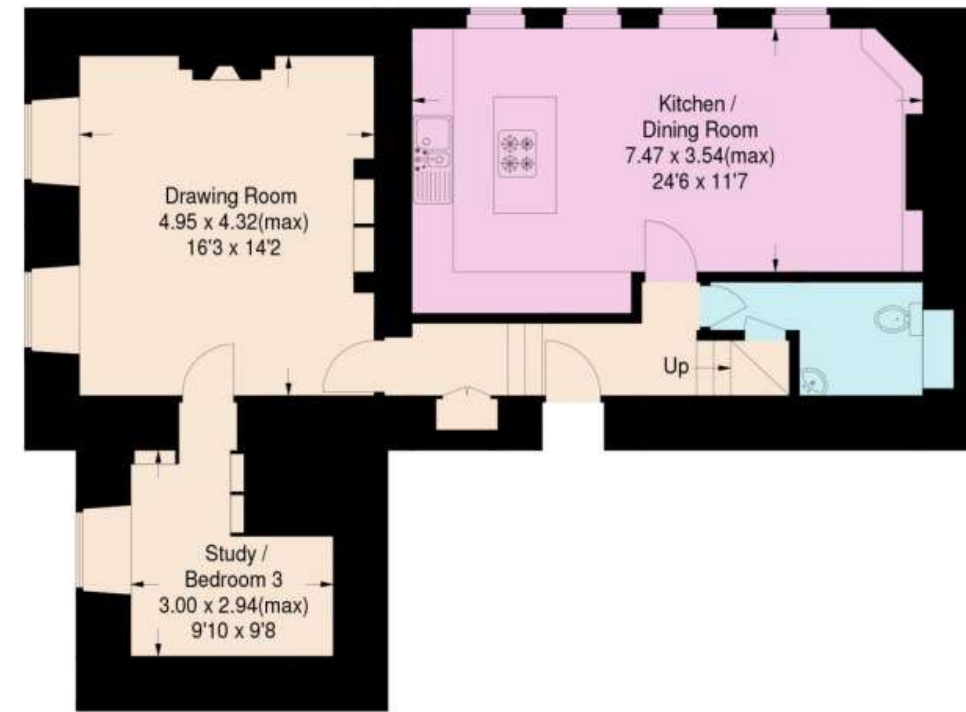
BEDROOMS

Upstairs, the master bedroom has sweeping views over open countryside. Both windows have working shutters and window seats, there is a lovely open fireplace and built-in wardrobes. The main bathroom is incredibly impressive with a large walk in rain shower, separate bath and underfloor heating. There is a useful utility cupboard with washing machine installed. The second double bedroom, with countryside views, benefits from a beautifully fitted en suite shower room, again with underfloor heating.

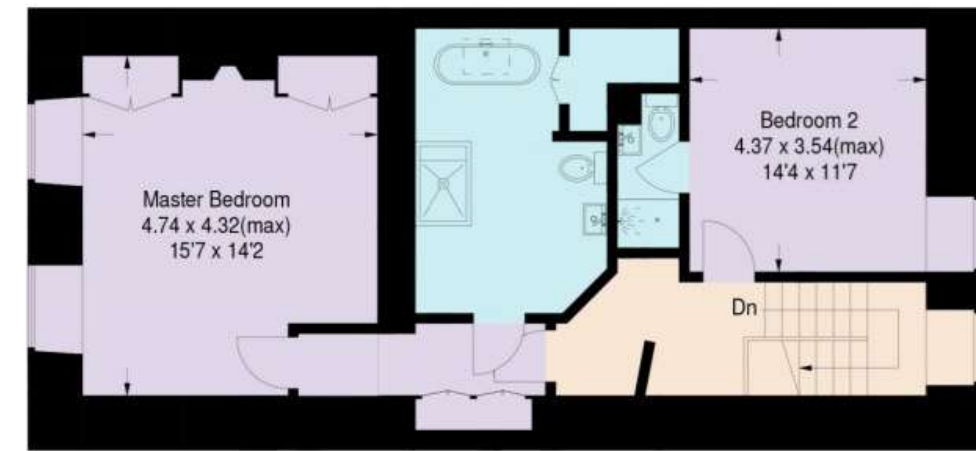




Approximate Gross Internal Area
141 sq m / 1518 sq ft



First Floor



Second Floor

Illustration for identification purposes only, measurements are approximate, not to scale.

This plan is for layout guidance only. Not drawn to scale unless stated. Windows and door openings are approximate. Whilst every care is taken in the preparation of this plan, please check all dimensions, shapes and compass bearings before making any decisions reliant upon them. (ID767266)

We would be delighted
to tell you more.

Harry Bethell
01242 246959
harry.bethell@knightfrank.com

Knight Frank
123 Promenade, Cheltenham
Cheltenham, GL50 1NW

knightfrank.co.uk

Your partners in property

1. Particulars: These particulars are not an offer or contract, nor part of one. You should not rely on statements given by Knight Frank in the particulars, by word of mouth or in writing ("information") as being factually accurate about the property, its condition or its value. Neither Knight Frank nor any joint agent has any authority to make any representations about the property, and accordingly any information given is entirely without responsibility on the part of Knight Frank. 2. Material Information: Please note that the material information is provided to Knight Frank by third parties and is provided here as a guide only. While Knight Frank has taken steps to verify this information, we advise you to confirm the details of any such material information prior to any offer being submitted. If we are informed of changes to this information by the seller or another third party, we will use reasonable endeavours to update this as soon as practical. 3. Photos, Videos etc: The photographs, property videos and virtual viewings etc. show only certain parts of the property as they appeared at the time they were taken. Areas, measurements and distances given are approximate only. 4. Regulations etc: Any reference to alterations to, or use of, any part of the property does not mean that any necessary planning, building regulations or other consent has been obtained. A buyer must find out by inspection or in other ways that these matters have been properly dealt with and that all information is correct. 5. Fixtures and fittings: A list of the fitted carpets, curtains, light fittings and other items fixed to the property which are included in the sale (or may be available by separate negotiation) will be provided by the Seller's Solicitors. 6. VAT: The VAT position relating to the property may change without notice. 7. To find out how we process Personal Data, please refer to our Group Privacy Statement and other notices at <https://www.knightfrank.com/legals/privacy-statement>.

Particulars dated May 2025. Photographs and videos dated March 2025. All information is correct at the time of going to print. Knight Frank is the trading name of Knight Frank LLP. Knight Frank LLP is a limited liability partnership registered in England and Wales with registered number OC305934. Our registered office is at 55 Baker Street, London W1U 8AN. We use the term 'partner' to refer to a member of Knight Frank LLP, or an employee or consultant. A list of members names of Knight Frank LLP may be inspected at our registered office. If you do not want us to contact you further about our services then please contact us by either calling 020 3544 0692, email to marketing.help@knightfrank.com or post to our UK Residential Marketing Manager at our registered office (above) providing your name and address.