



THE RIDGE, ASHLEY ROAD

Charlton Kings, Cheltenham, GL52 6QE



A BEAUTIFULLY APPOINTED DETACHED FAMILY HOME

A beautifully appointed detached family home located in a favoured position on Ashley Road at the heart of the prestigious Battledown Estate.



7



4



4

EPC

C

Local Authority: Cheltenham Borough Council

Council Tax band: G

Tenure: Freehold



THE RIDGE, ASHLEY ROAD

Set back from the road The Ridge is approached via automated gates to a large gravel driveway providing ample parking for multiple vehicles and access to the double garage.

Battledown is one of Cheltenham's most desirable locations and sits on the edge of the Cotswolds Area of Outstanding Natural Beauty.

Set within a 0.66 acre plot, the rear garden is laid predominantly to lawn bordered by mature planted beds and enclosed by timber fencing. Immediately behind the house a large raised garden terrace with glazed balustrade spans the full width and provides the perfect vantage point to enjoy the best of the westerly views over Cheltenham and towards the Malvern Hills.





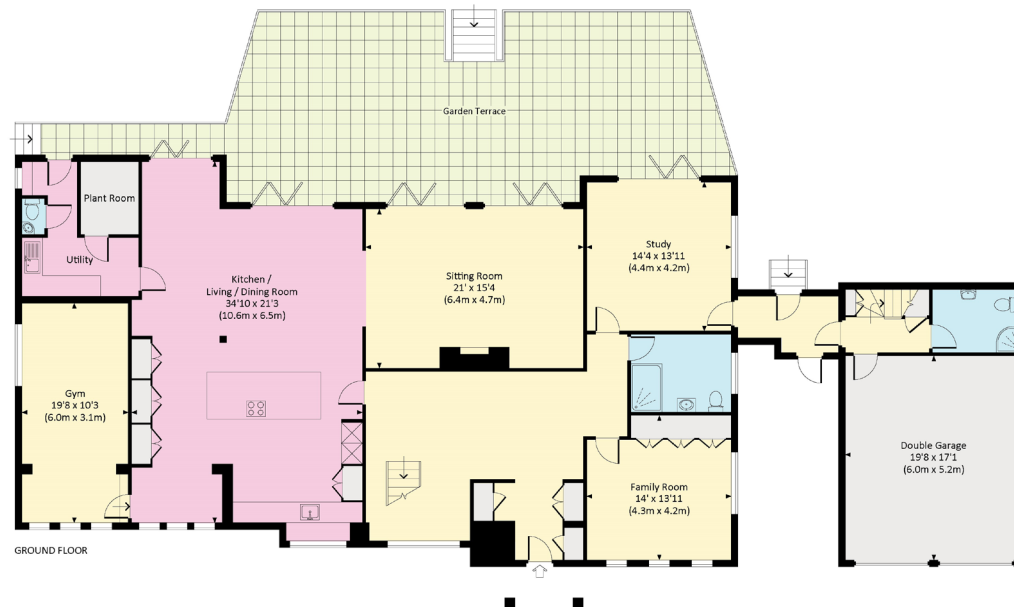


THE RIDGE, ASHLEY ROAD, GL52

Approx. gross internal area 4187 Sq Ft. / 389.0 Sq M.

Approx. gross internal area 4945 Sq Ft. / 459.4 Sq M. Inc. Restricted Height

Approx. gross internal area 5391 Sq Ft. / 500.8 Sq M. Inc. Garage



Approximate Gross Internal Area = 389.0 sq m / 4187 sq ft

This plan is for layout guidance only. Not drawn to scale unless stated. Windows and door openings are approximate. Whilst every care is taken in the preparation of this plan, please check all dimensions, shapes and compass bearings before making any decisions reliant upon them. (ID767266)

We would be delighted
to tell you more.

Nick Chivers
+44 1242 246 959
nick.chivers@knightfrank.com

Knight Frank Cheltenham
123 Promenade, Cheltenham
Gloucestershire, GL40 1NW

knightfrank.co.uk

Your partners in property

1. Particulars: These particulars are not an offer or contract, nor part of one. You should not rely on statements given by Knight Frank in the particulars, by word of mouth or in writing ("information") as being factually accurate about the property, its condition or its value. Neither Knight Frank nor any joint agent has any authority to make any representations about the property, and accordingly any information given is entirely without responsibility on the part of Knight Frank. 2. Material Information: Please note that the material information is provided to Knight Frank by third parties and is provided here as a guide only. While Knight Frank has taken steps to verify this information, we advise you to confirm the details of any such material information prior to any offer being submitted. If we are informed of changes to this information by the seller or another third party, we will use reasonable endeavours to update this as soon as practical. 3. Photos, Videos etc: The photographs, property videos and virtual viewings etc. show only certain parts of the property as they appeared at the time they were taken. Areas, measurements and distances given are approximate only. 4. Regulations etc: Any reference to alterations to, or use of, any part of the property does not mean that any necessary planning, building regulations or other consent has been obtained. A buyer must find out by inspection or in other ways that these matters have been properly dealt with and that all information is correct. 5. Fixtures and fittings: A list of the fitted carpets, curtains, light fittings and other items fixed to the property which are included in the sale (or may be available by separate negotiation) will be provided by the Seller's Solicitors. 6. VAT: The VAT position relating to the property may change without notice. 7. To find out how we process Personal Data, please refer to our Group Privacy Statement and other notices at <https://www.knightfrank.com/legals/privacy-statement>.

Particulars dated February 2025. Photographs dated Summer 2024. All information is correct at the time of going to print. Knight Frank is the trading name of Knight Frank LLP. Knight Frank LLP is a limited liability partnership registered in England and Wales with registered number OC305934. Our registered office is at 55 Baker Street, London W1U 8AN. We use the term 'partner' to refer to a member of Knight Frank LLP or an employee or consultant. A list of members names of Knight Frank LLP may be inspected at our registered office. If you do not want us to contact you further about our services then please contact us by either calling 020 3544 0692, email to marketing.help@knightfrank.com or post to our UK Residential Marketing Manager at our registered office (above) providing your name and address.