



Avalon, Beacons Bottom, Buckinghamshire





A beautifully presented and upgraded four bedroom family home with a one bedroom, self contained home.

Summary of accommodation

Main House

Entrance hall | Open plan living/dining room | Kitchen

Principal bedroom with dressing room and en suite shower

Guest bedroom with en suite shower room

Bedroom three and four (occasional study)

Family bathroom

Annexe

Entrance hall | Open plan living room/kitchen

Bathroom | Double bedroom

Garden and Grounds

Driveway | Lawned gardens

In all about 0.19 acres



**Knight
Frank**

Bucks & Herts
St Mary's Court
Amersham
HP7 0UT

[knightfrank.co.uk](https://www.knightfrank.co.uk)

William Furniss
01494 675368
william.furniss@knightfrank.com

Situation

The home is situated in the small Chiltern's hamlet of Beacons Bottom, a pretty and eclectic collection of homes, surrounded by delightful Chiltern's countryside. Between Piddington and Stokenchurch (junction 5 of the M40 is just 1.5 miles away) Beacons Bottoms is in the Green Belt and is an Area of Outstanding Natural Beauty.

Buckinghamshire is renowned for its standard of education and Avalon sits within close proximity of a number of very good schools catering for children of all ages, both state and independent.

Distances

Stokenchurch 1.5 miles (M40 J5)

High Wycombe 5.5 miles

London Marylebone 28 minutes

Princes Risborough 6.5 miles

London Heathrow 28 miles

Central London 40 miles

(All distances and times are approximate)





Avalon

Avalon is entered via the welcoming entrance hall and the accommodation is as shown in the enclosed floor plans.

Refurbished and renovated, the house offers a lovely, light feeling. The main reception room with a log burning stove runs the width of the rear of the property with doors opening to the gardens; off this is the very well fitted open plan kitchen. Arranged over three levels, the four bedrooms and three bath/shower rooms are all well-appointed.





Annexe



Annexe



Annexe





Annexe

A very useful, one bedroom self-contained home, suitable for a variety of uses including guest accommodation, family annexe and home office.

It is approached separately and is presented to the same high standards of the house.

Outside, it has it's own decked terrace.

Approximate Gross Internal Floor Area

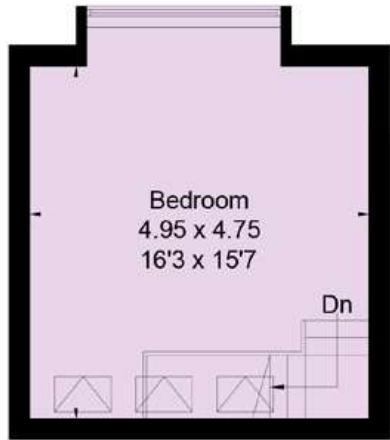
Ground Floor: 112.7 sq m / 1,213 sq ft

First Floor: 25.2 sq m / 571 sq ft

Annexe Ground Floor: 24.9 sq m / 268 sq ft

Annexe First Floor: 24.8 sq m / 267 sq ft

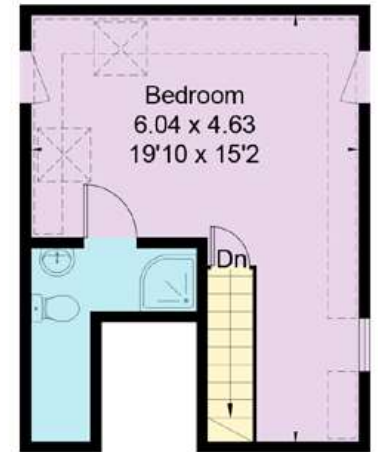
Total: 187.6 sq m / 2,019 sq ft



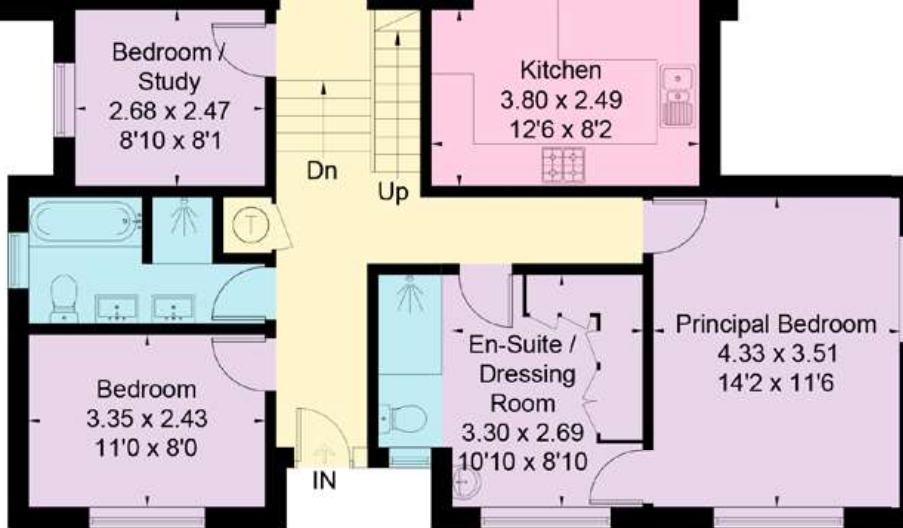
Annexe Ground Floor



Annexe First Floor



First Floor



Ground Floor



Garden and Grounds

The house, approached across a good-sized driveway, sits well within its grounds with open areas of lawn which is home to much wildlife, and all enclosed by mature hedging.

Property information

Tenure: Freehold.

Services: Air conditioning and heating (air to air) and mains water, electricity & drainage.

Local authority: Buckinghamshire Council

Council Tax Band: F

Energy Performance Certificate Rating: D (rating 57)

Postcode: HP14 3XE

Viewings

All viewings strictly by appointment only through the vendors' sole selling agents, Knight Frank LLP.



Fixtures and fittings: A list of the fitted carpets, curtains, light fittings and other items fixed to the property which are included in the sale (or may be available by separate negotiation) will be provided by the Seller's Solicitors.

Important Notice: 1. Particulars: These particulars are not an offer or contract, nor part of one. You should not rely on statements by Knight Frank LLP in the particulars or by word of mouth or in writing ("information") as being factually accurate about the property, its condition or its value. Neither Knight Frank LLP nor any joint agent has any authority to make any representations about the property, and accordingly any information given is entirely without responsibility on the part of the agents, seller(s) or lessor(s). 2. Photos, Videos etc: The photographs, property videos and virtual viewings etc. show only certain parts of the property as they appeared at the time they were taken. Areas, measurements and distances given are approximate only. 3. Regulations etc: Any reference to alterations to, or use of, any part of the property does not mean that any necessary planning, building regulations or other consent has been obtained. A buyer or lessee must find out by inspection or in other ways that these matters have been properly dealt with and that all information is correct. 4. VAT: The VAT position relating to the property may change without notice. 5. To find out how we process Personal Data, please refer to our Group Privacy Statement and other notices at <https://www.knightfrank.com/legals/privacy-statement>.

Particulars dated June 2024. Photographs and videos dated June 2024.

All information is correct at the time of going to print. Knight Frank is the trading name of Knight Frank LLP. Knight Frank LLP is a limited liability partnership registered in England and Wales with registered number OC305934. Our registered office is at 55 Baker Street, London W1U 8AN. We use the term "partner" to refer to a member of Knight Frank LLP, or an employee or consultant. A list of members names of Knight Frank LLP may be inspected at our registered office. If you do not want us to contact you further about our services then please contact us by either calling 020 3544 0692, email to marketing.help@knightfrank.com or post to our UK Residential Marketing Manager at our registered office (above) providing your name and address.

