



Stonhill House, Stewkley, Leighton Buzzard, Buckinghamshire



A Grade II Listed, village home with rural views and a separate two bedroom annexe.

Summary of accommodation

Main House

Entrance hall | Sitting room | Living room | Dining room

Study | Kitchen/breakfast room | Utility/boot room

Ground floor bedroom with en suite shower room

Ground floor bathroom

Principal bedroom with en suite bathroom

Three further bedrooms | Family shower room

Annexe

Living/dining room | Kitchen

Main bedroom with en suite shower room

Bedroom two | Bathroom

Garden and Grounds

Driveway | Lawned gardens | Terrace

In all about 0.25 acres



Bucks & Herts
St Mary's Court
Amersham
HP7 0UT
[knightfrank.co.uk](https://www.knightfrank.co.uk)

William Furniss
01494 675368
william.furniss@knightfrank.com

Max Warby
01494 689263
max.warby@knightfrank.com

Situation

Stewkley is an attractive, north Buckinghamshire village mid-way between Winslow and Leighton Buzzard. The larger towns of Leighton Buzzard and Aylesbury, which are a short drive away, provide an excellent range of shops and leisure facilities. In addition, the city of Milton Keynes is only 11 miles distant. For the commuter easy access to the M1 can be found at junction 11 whilst the mainline railway station at Leighton Buzzard provides a fast and frequent service to London Euston in approximately 34 minutes. Alternatively, from Aylesbury there is the Chiltern line to London Marylebone in approximately 56 minutes.

St Michaels Church of England Primary School, in the village, provides education for children aged 4 – 11 years. There are Grammar Schools in Aylesbury and a good selection of private schools nearby including Swanbourne Prep School, Akeley Wood School and Stowe School.

Distances

Leighton Buzzard 5 miles (London Euston 31 minutes)

Winslow 6.5 miles

Aylesbury 11 miles (London Marylebone 57 minutes)

Milton Keynes 11 miles

M1 (J11) 14 miles

Oxford 35 miles

London 51 miles

(All distances and times are approximate)



Stonhill House

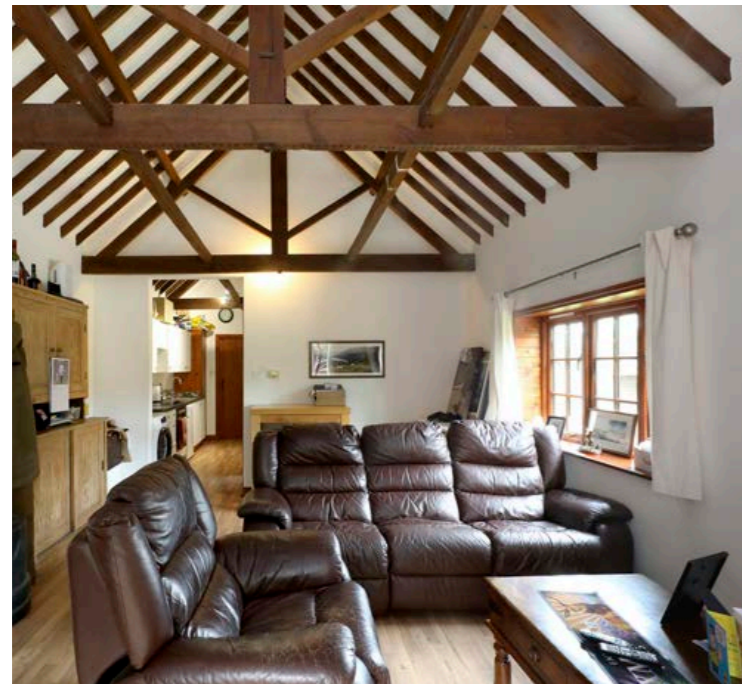
Stonhill House is a lovely, Grade II Listed family home situated in the heart of the village. The part thatched property offers a huge amount of character with many period features throughout, complemented by modern finishes in the kitchen and bathrooms. The flexible accommodation is arranged as shown on the floorplan.

All four of the reception areas are generously proportioned with a good-sized kitchen/breakfast room and separate utility room also on the ground floor. There are four bedrooms and two bathrooms to the first floor with a very useful bedroom five, with an en suite shower room on the ground floor.





The detached annexe offers a comfortable living room, kitchen, two bedrooms, one with an en suite, and a further bathroom.



Garden and Grounds

Stonhill House is approached from the road across a gravelled driveway leading to either the front of the house or the annexe. There are a number of attractive floral beds and

a large oak tree. To the rear, the gardens are laid mainly to lawn with a paved terrace immediately adjacent to the house. Beyond, the gardens have impressive views over open fields.

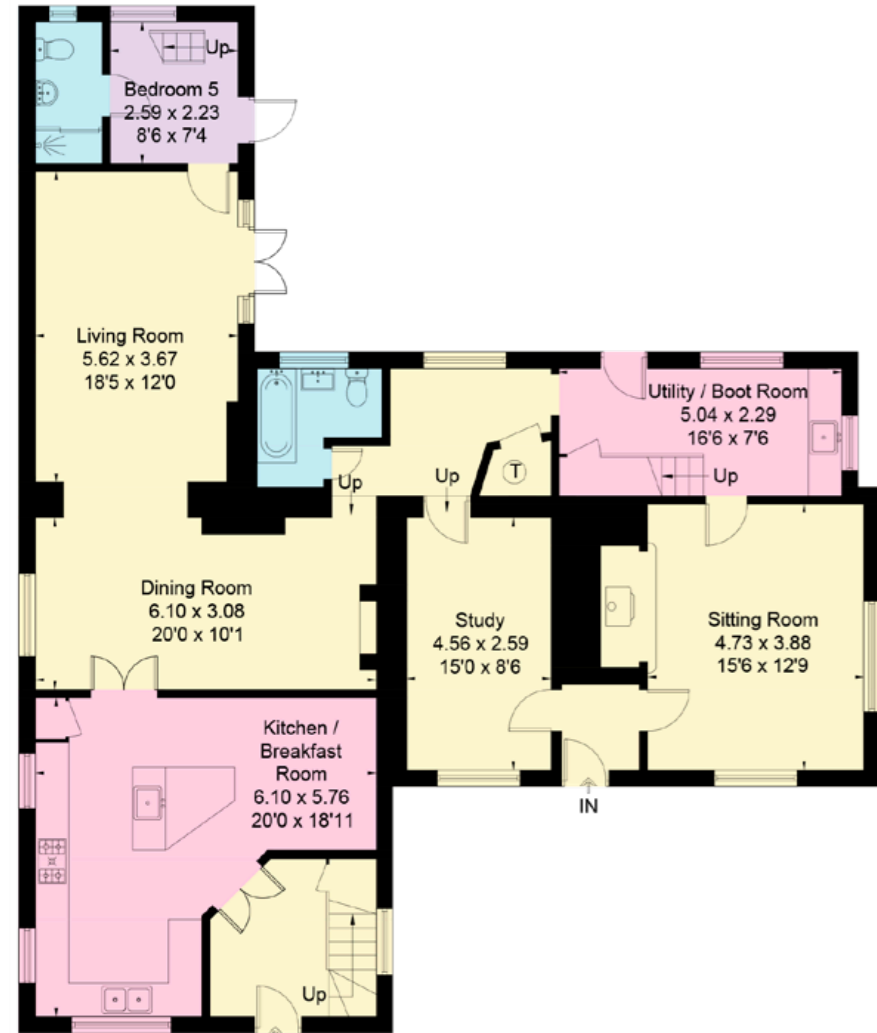
Approximate Gross Internal Floor Area

Ground Floor: 1576 sq m / 1,696 sq ft

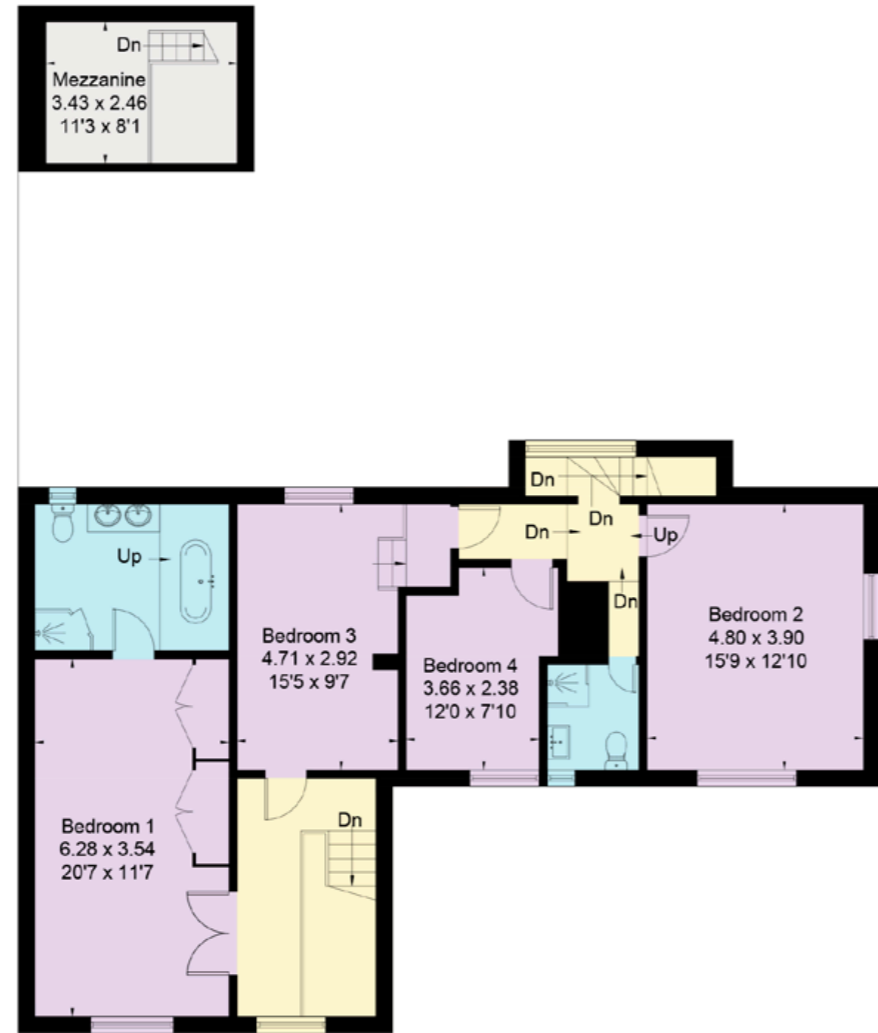
First Floor: 110.8 sq m / 1,192 sq ft

Annexe: 57.6 sq m / 620 sq ft

Total: 326.0 sq m / 3,509 sq ft



Ground Floor



First Floor



Annexe
(Not Shown In Actual
Location / Orientation)



Property information

Guide Price: £1,150,000

Tenure: Freehold.

Services: Mains water, electricity, gas & drainage

Local Authority: Buckinghamshire Council

Council Tax Band: Main House - G. Annexe - C.

Energy Performance Certificate Rating: Main House - E (rating 52)

Annexe - C (rating 72)

Postcode: LU7 0EW

Viewings

All viewings strictly by appointment only through the vendors' sole selling agents, Knight Frank LLP.



This plan is for guidance only and must not be relied upon as a statement of fact. Attention is drawn to the important notice on the last page of the text of the Particulars.

Fixtures and fittings: A list of the fitted carpets, curtains, light fittings and other items fixed to the property which are included in the sale (or may be available by separate negotiation) will be provided by the Seller's Solicitors.
Important Notice: 1. Particulars: These particulars are not an offer or contract, nor part of one. You should not rely on statements by Knight Frank LLP in the particulars or by word of mouth or in writing ("information") as being factually accurate about the property, its condition or its value. Neither Knight Frank LLP nor any joint agent has any authority to make any representations about the property, and accordingly any information given is entirely without responsibility on the part of the agents, seller(s) or lessor(s). 2. Photos, Videos etc: The photographs, property videos and virtual viewings etc. show only certain parts of the property as they appeared at the time they were taken. Areas, measurements and distances given are approximate only. 3. Regulations etc: Any reference to alterations to, or use of, any part of the property does not mean that any necessary planning, building regulations or other consent has been obtained. A buyer or lessee must find out by inspection or in other ways that these matters have been properly dealt with and that all information is correct. 4. VAT: The VAT position relating to the property may change without notice. 5. To find out how we process Personal Data, please refer to our Group Privacy Statement and other notices at <https://www.knightfrank.com/legals/privacy-statement>. Particulars dated June 2024. Photographs and videos dated June 2024.

All information is correct at the time of going to print. Knight Frank is the trading name of Knight Frank LLP. Knight Frank LLP is a limited liability partnership registered in England and Wales with registered number OC305934. Our registered office is at 55 Baker Street, London W1U 8AN. We use the term 'partner' to refer to a member of Knight Frank LLP, or an employee or consultant. A list of members names of Knight Frank LLP may be inspected at our registered office. If you do not want us to contact you further about our services then please contact us by either calling 020 3544 0692, email to marketing.help@knightfrank.com or post to our UK Residential Marketing Manager at our registered office (above) providing your name and address.

