

10 Jeffries Court, Bourne End, Buckinghamshire





A stunning riverside home with beautiful views across the Thames to National Trust land beyond.

Summary of accommodation

Main House

Entrance hall | Open plan living/dining/kitchen

Third bedroom on ground floor with built in wardrobes

Utility room | Cloakroom | Store

Principal bedroom with fitted wardrobes, a full height shuttered window and an en suite shower room

Bedroom two with fitted wardrobes | Family bathroom

Garden and Grounds

Car port | Raised terrace with steps down to lawns

20ft. mooring

In all about 0.09 acres



Bucks & Herts
St Mary's Court
Amersham
HP7 0UT
[knightfrank.co.uk](https://www.knightfrank.co.uk)

William Furniss
01494 675368
william.furniss@knightfrank.com

Situation

The popular riverside village of Bourne End offers a selection of excellent shops, restaurants, services and schools for all ages. The M40 and M4 motorways are easily accessible via the Marlow Bypass (A404) at Maidenhead and High Wycombe.

The railway station in Bourne End provides links to London Paddington via Maidenhead. Heathrow Airport is approximately 22 miles away via the M4 motorway and the nearby village of Cookham, and larger towns of Marlow and Beaconsfield, are a short drive away.

Distances

Bourne End 0.5 miles

Marlow 3.8 miles

Maidenhead (Elizabeth Line) 4.8 miles

M40 junction 2 5 miles

M4 Junction 8/9 5 miles

(all distances and times are approximate)

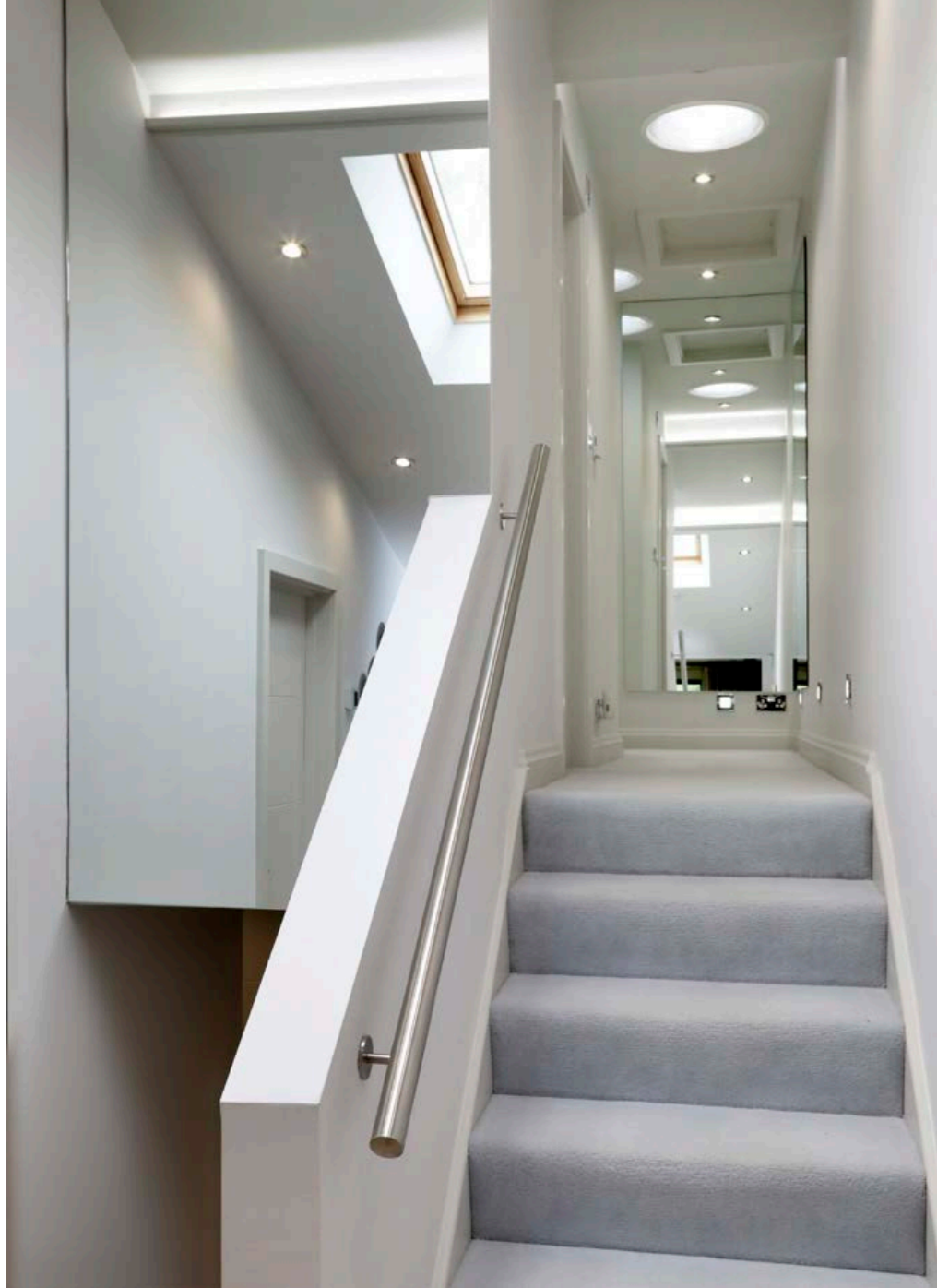


10 Jeffries Court

No.10 is a wonderful home which is beautifully presented. The layout is as shown in the enclosed floorplans.

The house has been refurbished by the present owners and from the welcoming hall, steps lead up to the spacious open plan living/dining/kitchen. The kitchen is extremely well fitted and there is a remotely operated fireplace. From this lovely room, glazed doors lead to the covered terrace with stunning riverside views.

The three bedrooms are all a good size with the principal bedroom having an en suite shower room; there is also a family bathroom.





Garden and Grounds

There is a covered terrace area to the rear of the open plan living space, which, in turn, leads down to a private garden with patio area. The lawns lead down to the banks of the river Thames with a 20ft mooring.

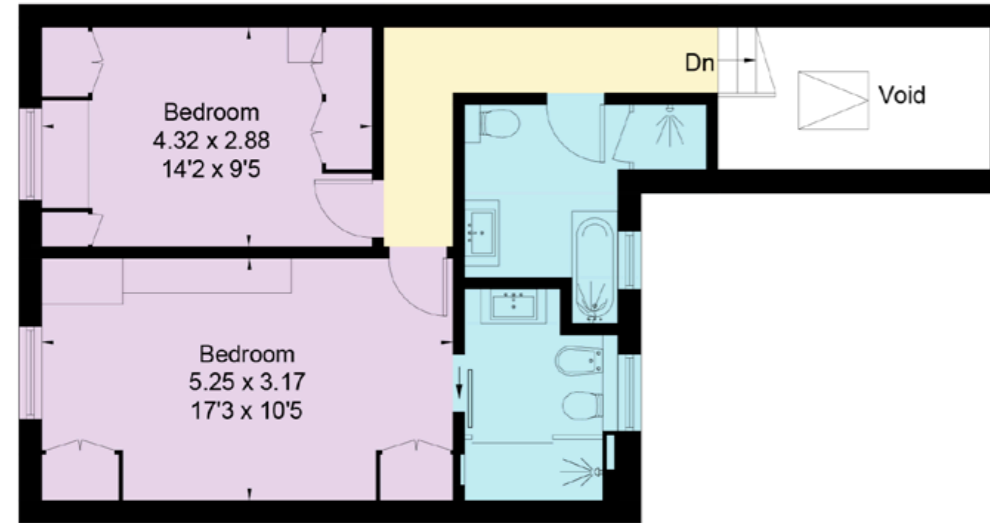
To the front of the property is a gravelled driveway which leads to a car port. There is also an additional storage space under the main body of the property.

Approximate Gross Internal Floor Area

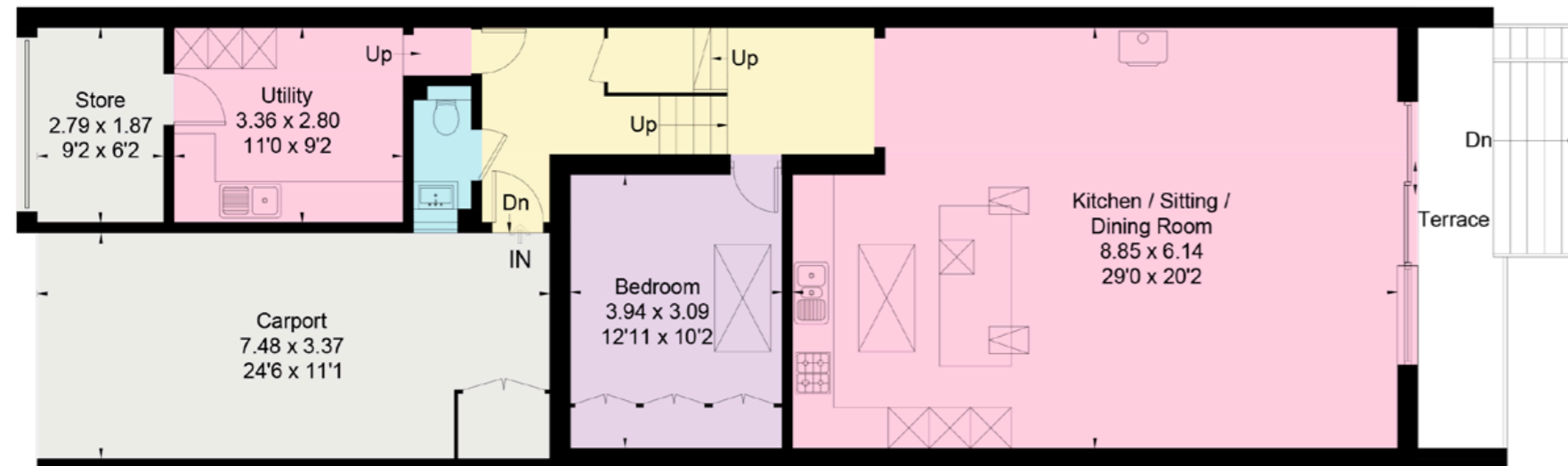
Ground Floor: 96.9 sq m / 1,043 sq ft

First Floor: 48.4 sq m / 521 sq ft

Total: 145.3 sq m / 1,564 sq ft (Excluding Void & Carport)



First Floor



Ground Floor

This plan is for guidance only and must not be relied upon as a statement of fact. Attention is drawn to the important notice on the last page of the text of the Particulars.



Property information

Offers in excess of: £1,250,000

Tenure: Freehold.

Services: Mains water, electricity, gas & drainage

Local authority: Buckinghamshire Council

Council Tax Band: G

Energy Performance Certificate Rating: Band C (rating 70)

Postcode: SL8 5DY

Viewings

All viewings strictly by appointment only through the vendors' sole selling agents, Knight Frank LLP.

Fixtures and fittings: A list of the fitted carpets, curtains, light fittings and other items fixed to the property which are included in the sale (or may be available by separate negotiation) will be provided by the Seller's Solicitors.

Important Notice: 1. Particulars: These particulars are not an offer or contract, nor part of one. You should not rely on statements by Knight Frank LLP in the particulars or by word of mouth or in writing ("information") as being factually accurate about the property, its condition or its value. Neither Knight Frank LLP nor any joint agent has any authority to make any representations about the property, and accordingly any information given is entirely without responsibility on the part of the agents, seller(s) or lessor(s). 2. Photos, Videos etc: The photographs, property videos and virtual viewings etc. show only certain parts of the property as they appeared at the time they were taken. Areas, measurements and distances given are approximate only. 3. Regulations etc: Any reference to alterations to, or use of, any part of the property does not mean that any necessary planning, building regulations or other consent has been obtained. A buyer or lessee must find out by inspection or in other ways that these matters have been properly dealt with and that all information is correct. 4. VAT: The VAT position relating to the property may change without notice. 5. To find out how we process Personal Data, please refer to our Group Privacy Statement and other notices at <https://www.knightfrank.com/legals/privacy-statement>. Particulars dated May 2024. Photographs and videos dated May 2024.

All information is correct at the time of going to print. Knight Frank is the trading name of Knight Frank LLP. Knight Frank LLP is a limited liability partnership registered in England and Wales with registered number OC305934. Our registered office is at 55 Baker Street, London W1U 8AN. We use the term 'partner' to refer to a member of Knight Frank LLP, or an employee or consultant. A list of members names of Knight Frank LLP may be inspected at our registered office. If you do not want us to contact you further about our services then please contact us by either calling 020 3544 0692, email to marketing.help@knightfrank.com or post to our UK Residential Marketing Manager at our registered office (above) providing your name and address.



