

Stewley Farm, Ashill, South Somerset

---





A beautiful Grade II listed red brick farmhouse, with a thoughtfully designed landscaped garden and orchard, in a semi-rural setting within the village of Ashill.

Accommodation

**Ground Floor** Entrance hall | Living room | Dining room | Study | Kitchen/breakfast room  
Utility room | Cloakroom

**First Floor** Principal bedroom with en suite shower room | 3 double bedrooms  
Shower room

**Outside** Double garage | Gardens

In all approximately 0.57 of an acre

Distances

Ilminster 4.5 miles, Taunton 9 miles, Crewkerne 12 miles, Langport 13 miles  
(All distances are approximate)

Situation

The picturesque market town of Ilminster is nearby and hosts its own weekly market, as well as a plethora of independent shops. Slightly further afield, Langport had two excellent bakeries, a butcher, a weekly farmers' market, and a pretty café on the river. The towns of Crewkerne and Wellington both have more shopping facilities, as well as a Waitrose, whilst three miles from the house is a popular pub, The Bell, in the village of Broadway. The village of Barrington is home to the excellent Barrington Boar bar and restaurant. Somerton, with its lively High Street, renowned antique shops and brilliant White Heart pub is also only approximately 30 minutes away.

There is an excellent choice of independent schools for boys and girls of all ages, including Hazlegrove Prep School, Sherborne School, Taunton School, Kings College, Queen's College and King's Hall. Other well-known schools in the area include Millfield and Blundell's, all within driving distance.





Communication links are good, with the cities of Bath, Bristol and Exeter accessible within a 1.5 hour drive, whilst the nearest M5 junction is just nine miles away. Taunton station is approximately 25 minutes' drive from Ashill, with direct mainline services to London Paddington taking one hour and 40 minutes. Alternatively, central London can be reached by car, via the M3, in around three hours.

## The House

The front door opens into a lovely hallway with a blue Lias stone floor. To one side of the hallway is a charming living room, warmed by a wood-burning stove nestled in a deep brick inglenook at the gable end. The room retains its original features, including a bressummer beam running along its length and a substantial wooden lintel above the inglenook. The attractive wooden floorboards add to the room's character, and beneath the window, a romantic window seat creates a perfect spot to relax.

The dining room is at the heart of the house, with original stone floors and an inglenook with open fireplace. A door from the dining room leads to a study, a calm and quiet space with pretty garden views and, once again, a window seat.

The kitchen has off-white cabinetry juxtaposed with dark granite worktops and a large butler sink. A black Rangemaster cooker sits at one end of the kitchen, accompanied by a Rangemaster fridge and an integrated freezer and dishwasher. Smart fitted plate racks, a combination of cupboards and open shelving, and terracotta tiled floors complete the space. Tongue and groove panelling has been applied to the walls. The kitchen window frames lovely garden views, and a gap in the farmer's hedge provides a picturesque glimpse of the neighbouring field. Opposite the kitchen is convenient

utility space equipped with a second butler sink and ample room for a washing machine. An external door between the kitchen and utility room opens directly onto a patio area and the garden. There is also a cloakroom on this floor.

On the first floor there are four good sized bedrooms, the principal with ensuite shower room, and three doubles all of which share a well-appointed bathroom.







## Outside

The property is approached onto a private gravel driveway where there is parking space for multiple cars, in addition to the spacious double garage.

The house is enveloped by a beautiful garden, which has a flourishing orchard, expanded by the current owners. The orchard now has crab apple trees, wild cherry trees, and an assortment of other fruit trees, adding to the natural beauty of the surroundings. Privacy is created by a beech hedge, while a majestic maple tree adds shade. Next to the house, a charming kitchen garden is enclosed by estate fencing, lined with a row of pleached russet apple trees and complete with a greenhouse.

## Property information

**What Three Words:** ///fires.accusing.skirting

**Services:** Mains water and electricity. Private Drainage (septic tank).  
Oil fired central heating (new boiler).

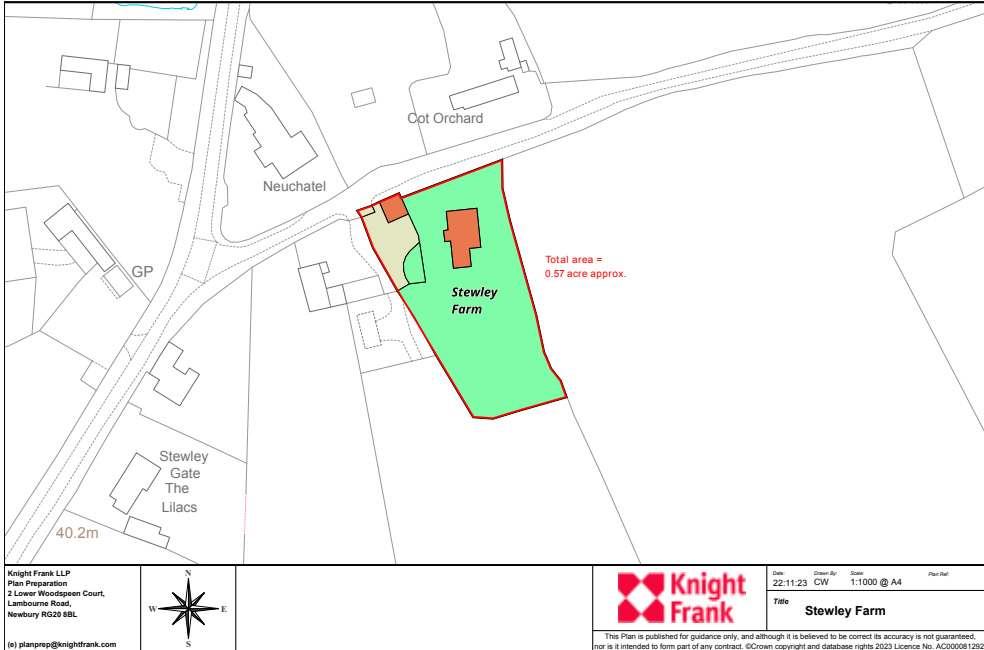
**Method of Sale:** We are advised that the property is Freehold.

**Offers in excess of:** £800,000

**Local Authority:** South Somerset Council - somerset.gov.uk

**Council Tax:** Band G

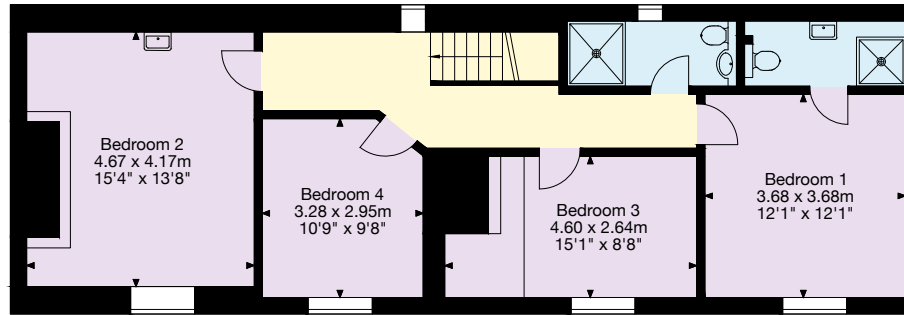
**Viewing:** Strictly by prior appointment with the agent.



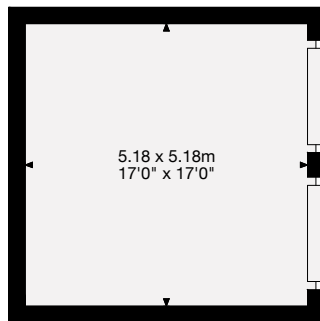


Main House = 187 sq m / 2,009 sq ft  
Double Garage = 27 sq m / 289 sq ft  
Total Area = 214 sq m / 2,298 sq ft

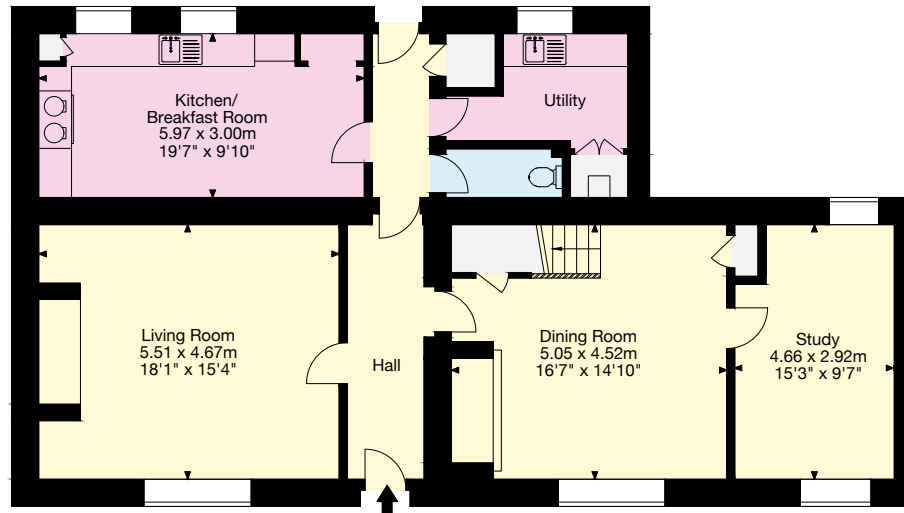
This plan is for guidance only and must not be relied upon as a statement of fact. Attention is drawn to the important notice on the last page of the text of the Particulars.



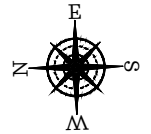
First Floor



Double Garage



Ground Floor



Knight Frank Bath  
4 Wood Street  
Queen Square, Bath  
BA1 2JQ  
[knightfrank.co.uk](https://www.knightfrank.co.uk)

I would be delighted to tell you more  
Francesca Leighton-Scott  
01225 325 994  
[Francesca.Leighton-Scott@knightfrank.com](mailto:Francesca.Leighton-Scott@knightfrank.com)



Fixtures and fittings: A list of the fitted carpets, curtains, light fittings and other items fixed to the property which are included in the sale (or may be available by separate negotiation) will be provided by the Seller's Solicitors.

Important Notice: 1. Particulars: These particulars are not an offer or contract, nor part of one. You should not rely on statements by Knight Frank LLP in the particulars or by word of mouth or in writing ("information") as being factually accurate about the property, its condition or its value. Neither Knight Frank LLP nor any joint agent has any authority to make any representations about the property, and accordingly any information given is entirely without responsibility on the part of the agents, seller(s) or lessor(s). 2. Photos, Videos etc: The photographs, property videos and virtual viewings etc. show only certain parts of the property as they appeared at the time they were taken. Areas, measurements and distances given are approximate only. 3. Regulations etc: Any reference to alterations to, or use of, any part of the property does not mean that any necessary planning, building regulations or other consent has been obtained. A buyer or lessee must find out by inspection or in other ways that these matters have been properly dealt with and that all information is correct. 4. VAT: The VAT position relating to the property may change without notice. 5. To find out how we process Personal Data, please refer to our Group Privacy Statement and other notices at <https://www.knightfrank.com/legals/privacy-statement>.

Particulars dated [December 2023]. Photographs and videos dated [December 2023].

All information is correct at the time of going to print. Knight Frank is the trading name of Knight Frank LLP. Knight Frank LLP is a limited liability partnership registered in England and Wales with registered number OC305934. Our registered office is at 55 Baker Street, London W1U 8AN. We use the term 'partner' to refer to a member of Knight Frank LLP, or an employee or consultant. A list of members names of Knight Frank LLP may be inspected at our registered office. If you do not want us to contact you further about our services then please contact us by either calling 020 3544 0692, email to [marketing.help@knightfrank.com](mailto:marketing.help@knightfrank.com) or post to our UK Residential Marketing Manager at our registered office (above) providing your name and address.